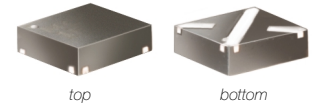


Miniature Plastic Fixed Attenuator

50Ω 0.5W 0dB DC to 8000 MHz

GAT-0+



CASE STYLE: FG873
PRICE: \$2.35 ea. QTY (10-49)

+ RoHS compliant in accordance with EU Directive (2002/95/EC)

The +Suffix has been added in order to identify RoHS Compliance. See our web site for RoHS Compliance methodologies and qualifications.

Maximum Ratings

Operating Temperature	-45°C to 85°C
Storage Temperature	-55°C to 100°C

Pin Connections

INPUT	1
OUTPUT	3
GROUND	2,4

Features

- miniature package MCLP™ 3x3 mm
- specified to 8000 MHz, useable to 10000 MHz
- excellent VSWR, 1:15:1 typ.

Applications

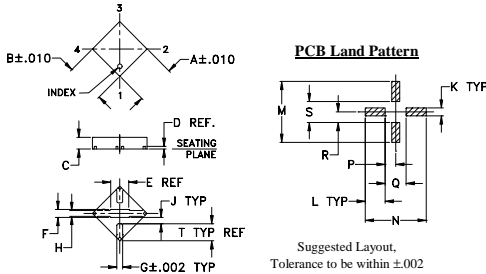
- cellular
- PCS
- communications
- radar
- defense

Electrical Specifications at 25°C

FREQ. RANGE (MHz)	ATTENUATION (dB)			VSWR (:1)			MAX. INPUT POWER ¹ (W)		
	Flatness								
	DC-1 GHz Typ.	1-5 GHz Typ.	5-8 GHz Typ.	DC-1 GHz Typ.	1-5 GHz Typ.	5-8 GHz Typ.			
f_L - f_U	Nom.								
DC-8000	0+0.2	0.1	0.2	1.05	1.2	1.15	1.35	1.25	0.5

1. RF power at 25°C case temperature: ½Watt. Derate linearly to 0.2 Watt at 85°C.
2. Flatness= variation over band divided by 2

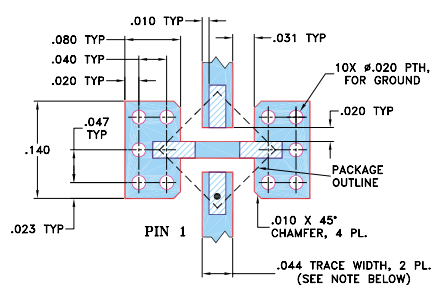
Outline Drawing



Outline Dimensions (inch/mm)

A	B	C	D	E	F	G	H	J	K	L	M	N	P	Q	R	S	T	wt
0.118	0.118	0.035	0.008	0.07	0.024	0.017	0.018	0.021										
3.00	3.00	0.89	0.20	1.78	0.61	0.43	0.46	0.53										
0.024	0.061	0.186	0.186	0.032	0.064	0.032	0.064	0.05	0.61	1.55	4.72	4.72	0.81	1.63	0.81	1.63	1.27	0.02

Demo Board MCL P/N: TB-154 Suggested PCB Layout (PL-126)

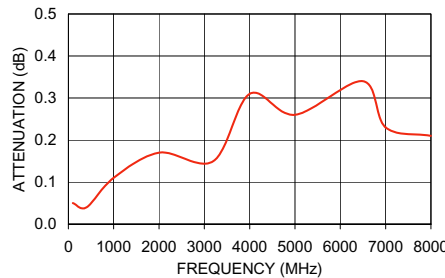


- NOTES:
1. TRACE WIDTH IS SHOWN FOR ROGERS R04350B WITH DIELECTRIC THICKNESS .020" ± .0015"; COPPER: 1/2 OZ. EACH SIDE. FOR OTHER MATERIALS TRACE WIDTH MAY NEED TO BE MODIFIED.
 2. BOTTOM SIDE OF THE PCB IS CONTINUOUS GROUND PLANE.
- DENOTES PCB COPPER LAYOUT WITH SMOBC (SOLDER MASK OVER BARE COPPER)
 DENOTES COPPER LAND PATTERN FREE OF SOLDER MASK

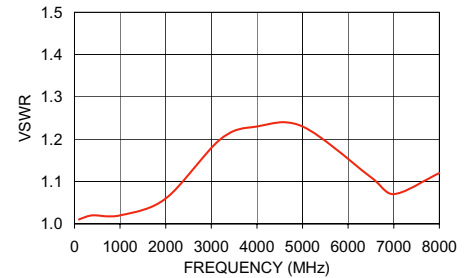
Typical Performance Data

Frequency (MHz)	Attenuation (dB)	VSWR (:1)
100.00	0.05	1.01
400.00	0.04	1.02
1000.00	0.11	1.02
2000.00	0.17	1.06
3200.00	0.15	1.20
4000.00	0.31	1.23
5000.00	0.26	1.23
6500.00	0.34	1.11
7000.00	0.23	1.07
8000.00	0.21	1.12

GAT-0+ ATTENUATION



GAT-0+ VSWR



P.O. Box 350166, Brooklyn, New York 11235-0003 (718) 934-4500 Fax (718) 332-4661 For detailed performance specs & shopping online see Mini-Circuits web site



The Design Engineers Search Engine Provides ACTUAL Data Instantly From MINI-CIRCUITS At: www.minicircuits.com

RF/IF MICROWAVE COMPONENTS

REV. C
M108294
GAT-0+
ED-9658
070213