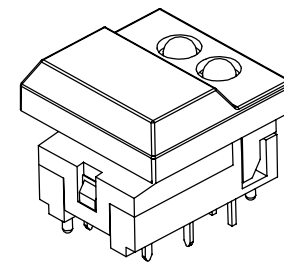
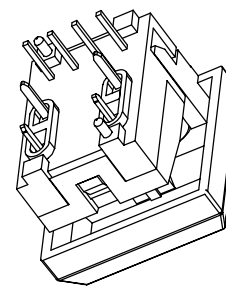
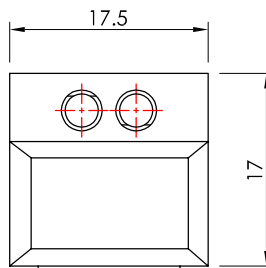
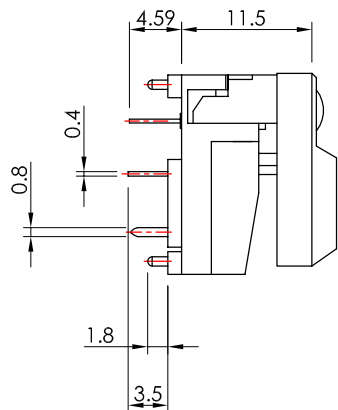
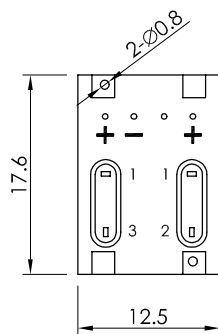
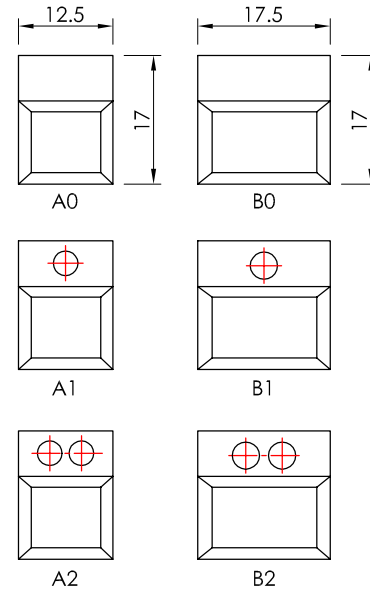


本圖面若與目錄之規格尺寸不符，以本圖面規格尺寸為主。  
Below is our main specification if different from catalog.

RoHS compliant



CAP STYLES

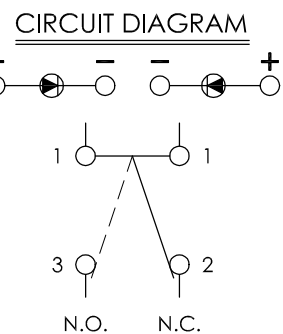


LED COLOR LEFT		LED COLOR RIGHT	
□	W/O LED	□	W/O LED
1	Red	1	Red
2	Yellow	2	Yellow
3	Green	3	Green

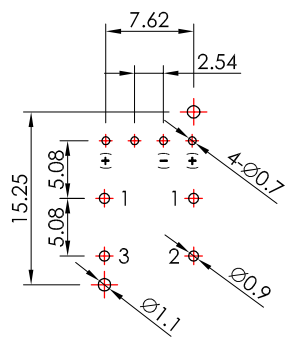
MP86XXXXH-G

CAP STYLE		CAP COLOR	
A0	W/O LED	R	Red
A1	1 LED	G	Gray
A2	2 LED	B	Black
B0	W/O LED	W	White
B1	1 LED	Y	Yellow
B2	2 LED	O	Orange
		BU	Blue
		GN	Green

RoHS compliant



P.C.B. LAYOUT



**SPECIFICATION**

- Current rating:** 12mA.
- Voltage rating:** 24V DC.
- Circuit:** SPDT.
- Total travel:** 1.5±0.4mm.
- Function:** Momentary.
- Contact resistance:** 50mΩ Max (initial).
- Insulation resistance:** 100MΩ Min.
- Dielectric withstanding voltage:** 250V AC for 1 minute.
- Operating temperature:** +10°C ~ +60°C.
- Operating force:** 170±50g.
- Minimum load:** 10mA 3.3V DC.(reference only)
- Operating life:** 50,000 Cycles Min.
- Soldering specifications:** 250°C Max for 3 Sec.
- Soldering time:** 1 time only.
- Note:** Not washable, don't immerse into epoxy and organic solvent.

**MATERIAL**

- Base:** Nylon66, UL rated: 94V-2 Min, black.
- Cap:** ABS.
- Terminal:** Phosphor bronze, golden plated.

V2.2	△		
V2.1	無	改版	2009.08.27
V2.0	無	新繪製	2009.08.17
版本 VER.	符號 SYMBOL	修改內容 ALTERATION	更新日期 DATE

產品 PRODUCT		型號 MODEL NO.	
Pushbutton Switch		MP86B0BH-G	
製圖 DRAWN BY	核圖 CHECKED BY	單位 UNIT	mm
Jack Liao	Alex Lin	比例 SCALE	3 : 2
	主管 APPROVED BY	公差 TOLERANCE	.X=±0.3mm, .XX=±0.2mm
	Margaret Lee		



**一綺電子企業股份有限公司**

總公司：110 台北市信義路四段415號13樓之3  
13F-3 NO. 415, SEC. 4, HSIN YI ROAD, TAIPEI, TAIWAN  
TEL : 886-2-27290229 (Rep.) FAX : 886-2-27582086  
URL : <http://www.switronic.com.tw>  
E-MAIL : [switches@ms36.hinet.net](mailto:switches@ms36.hinet.net)