



超小型钮子开关 Sub-Miniature Toggle Switch SMTS Series



型号说明 Ordering Information

SMTS-102-2C3T

- 支架 Support bracket
- 端子种类 Terminal options
- 手柄种类 Handle options
- 产品序号 Product order
- 电路特性 Circuitry trait
- 刀数 Poles
- 超小型钮子开关 Sub-Miniature Toggle Switch

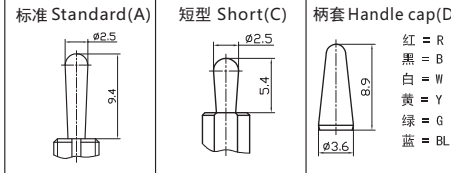
技术特性 Specification

1. 规格 Rating: 3A 125VAC; 1.5A 250VAC
2. 接触电阻 Contact Resistance: 20mΩ max
3. 绝缘电阻 Insulation Resistance: 500VDC 1000MΩ min
4. 耐压 Dielectric Strength: 1000VAC, 1Minute
5. 操作温度 Operating Temperature: -25°C ~ +85°C
6. 电气寿命 Electrical Life: 10,000 Cycles

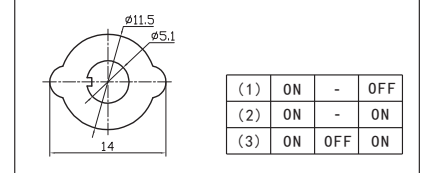
电路特性 Circuitry trait

01	ON	-	OFF
02	ON	-	ON
03	ON	OFF	ON

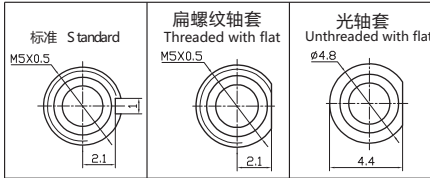
手柄种类 Handle options



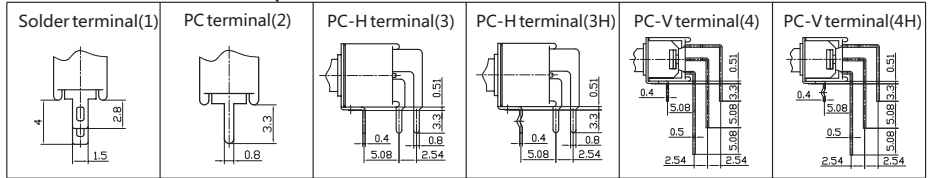
铭牌 Nameplate



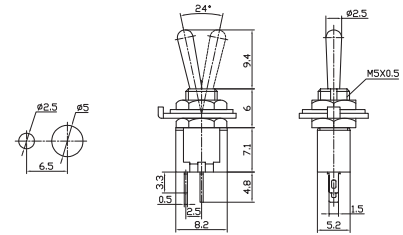
轴套种类 Bushing options



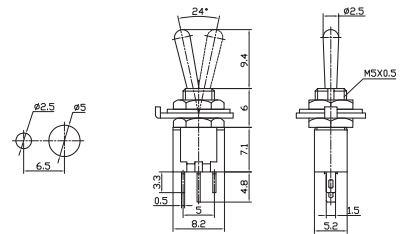
端子种类 Terminal options



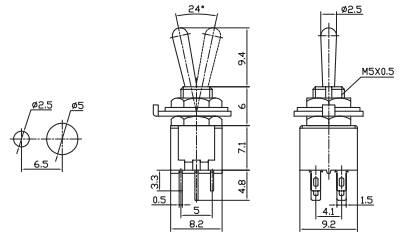
SMTS-101 ON-OFF
SPST 2P



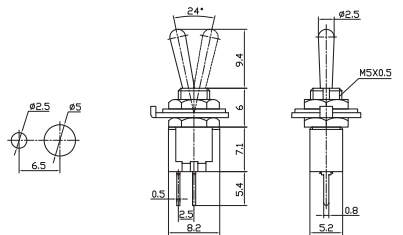
SMTS-102 ON-ON
SPDT 3P



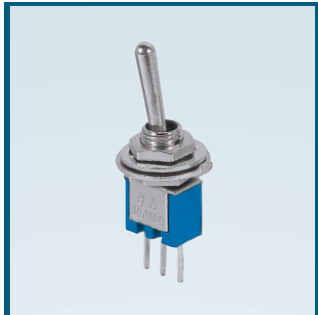
SMTS-202 ON-ON
DPDT 6P



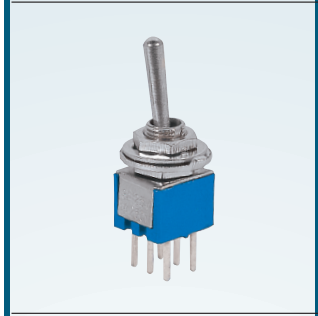
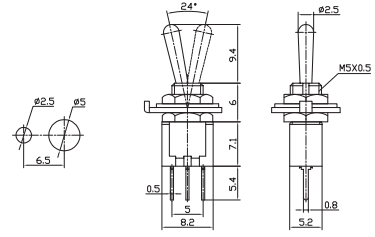
SMTS-101-A2 ON-OFF
SPST 2P



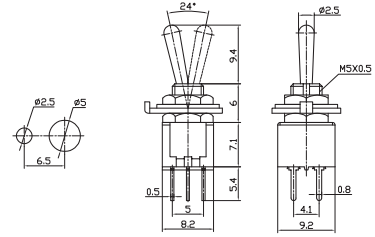
 超小型钮子开关 Sub-Miniature Toggle Switch SMTS Series



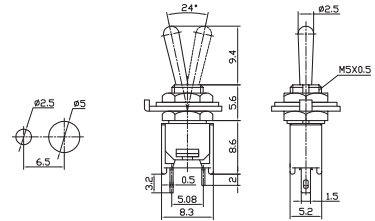
SMTS-102-A2 ON-ON
SPDT 3P



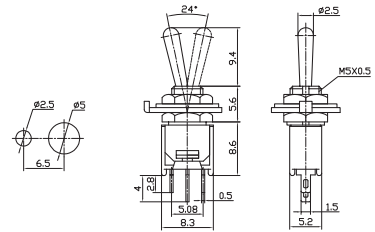
SMTS-202-A2 ON-ON
DPDT 6P



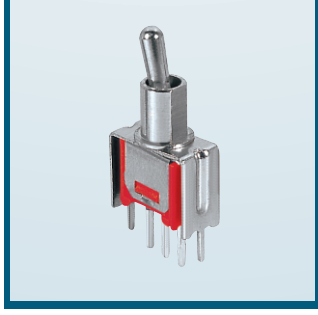
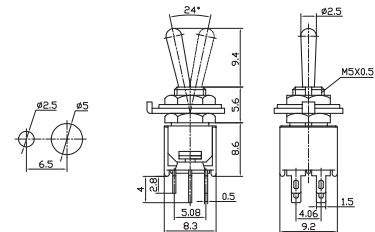
SMTS-101-2A1 ON-OFF
SPST 2P



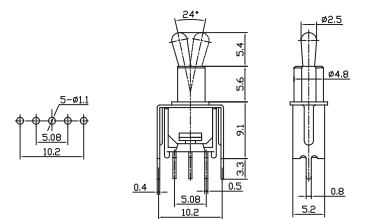
SMTS-102-2A1 ON-ON
SMTS-103-2A1 ON-OFF-ON
SPDT 3P



SMTS-202-2A1 ON-ON
SMTS-203-2A1 ON-OFF-ON
DPDT 6P



SMTS-102-2C2T ON-ON
SMTS-103-2C2T ON-OFF-ON
SPDT 3P



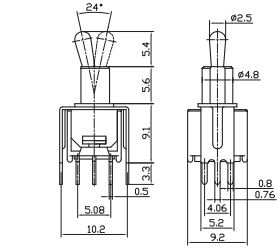


超小型钮子开关 Sub-Miniature Toggle Switch

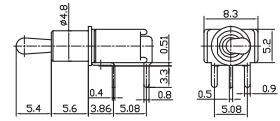
SMTS Series



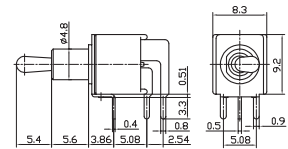
SMTS-202-2C2T ON-ON
 SMTS-203-2C2T ON-OFF-ON
 DPDT 6P



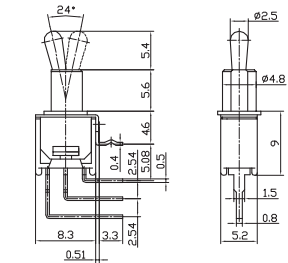
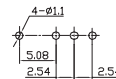
SMTS-102-2C3 ON-ON
 SMTS-103-2C3 ON-OFF-ON
 SPDT 3P



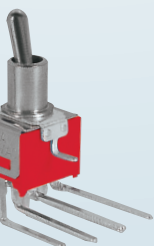
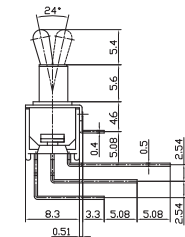
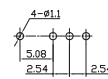
SMTS-202-2C3 ON-ON
 SMTS-203-2C3 ON-OFF-ON
 DPDT 6P



SMTS-102-2C4B ON-ON
 SMTS-103-2C4B ON-OFF-ON
 SPDT 3P



SMTS-102-2C4 ON-ON
 SMTS-103-2C4 ON-OFF-ON
 SPDT 3P



SMTS-202-2C4 ON-ON
 SMTS-203-2C4 ON-OFF-ON
 DPDT 6P
 L=4.06; 5.08

