

## Series B

### Technical Characteristics

#### Mechanical and Climatical

Characteristics	Value	Standard
Endurance	> 5000 cycles	IEC 60512-5 test 9a
Humidity	up to 95% at 60° C	
Temperature range	-55° C, +250° C	
Resistance to vibration	10-2000 Hz, 15 g	IEC 60512-4 test 6d
Shock resistance	100 g, 6 ms	IEC 60512-4 test 6c
Salt spray corrosion test	> 144h	IEC 60512-6 test 11f
Protection index (mated)	IP50	IEC 60529
Climatical category	55/175/21	IEC 60068-1

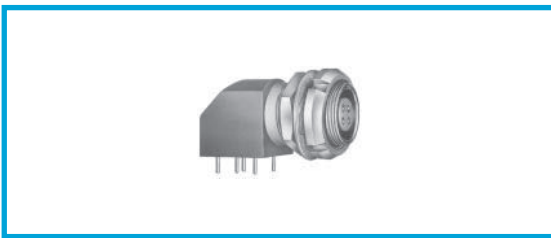
## Metal housing models

#### Electrical

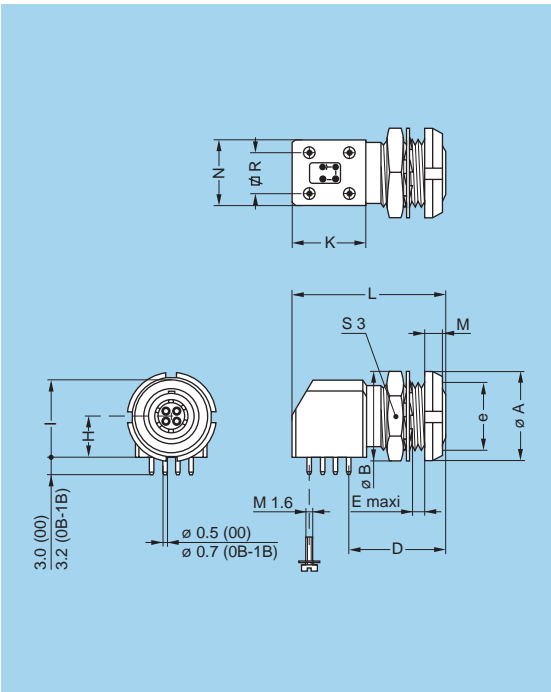
Characteristics	Value	Standard
Shielding efficiency	at 10 MHz	> 75 dB
	at 1 GHz	> 40 dB
		IEC 60169-1-3
		IEC 60169-1-3

**Note:**

the various tests have been carried out with FGG and EGG connector pairs, with chrome-plated brass shell and PEEK insulator.



#### XBG Elbow (90°) socket fixing nut for printed circuit, key (G) or keys (A, B) (back panel mounting)



Reference	Dimensions (mm)												
	A	B	D	e	E	H	I	K	L	M	N	R	S3
XBG.00.302.HLN													
XBG.00.303.HLN	10	10.2	11.5	M7x0.5	2.1	3.5	7.0	8.7	19	2.5	7.1	5.08	9
XBG.00.304.HLN													
EXG.0B.302.HLN													
EXG.0B.303.HLN													
EXG.0B.304.HLN													
EXG.0B.305.HLN	12	12.4	14.6	M9x0.6	6.0	6.7	12.7	13.3	25	2.5	11.7	7.62	11
EXG.0B.306.HLN													
EXG.0B.307.HLN													
EXG.0B.309.HLN													
EXG.1B.302.HLN													
EXG.1B.303.HLN													
EXG.1B.304.HLN													
EXG.1B.305.HLN	14	15.0	16.6	M11x0.5	7.5	7.5	14.0	13.3	27	3.5	12.6	7.62	13
EXG.1B.306.HLN													
EXG.1B.307.HLN													
EXG.1B.308.HLN													
EXG.1B.310.HLN													

**Note:** In the 0B and 1B series, it is possible to replace the 4 ground pins by 4 screws (M1.6) add an «S» to the end of the part number. (e.g.: EXG.0B.307.HLNS).

## Order information B

FG G - 0 B - 306 - C L A D 62 Z  
1 2 3 4 5 6 7 8 9 10 11

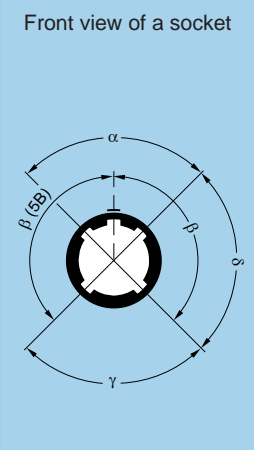
1. Model: F — plug; E — cable receptacle; H — waterproof receptacle;  
P — receptacle; X — receptacle PCB soldering
2. Key
3. Size
4. Series
5. Number of contacts: 306 - 6 contacts
6. Body material: C — chromium-plate brass
7. Insulator material: L — PEEK; Y — PEEK, long insulator, crimp
8. Type of pin: L — pin; A — socket, solder; M — socket, crimp;  
Y — socket, crimp; V — socket, elbow print
9. Collet mechanism: D — collet for B socket
10. Collet diameter: 62 — 6,2mm
11. Z - shock absorber for cable, option

## Alignment Key

Series B

### Alignment Key and Polarized Keying System

K series connector model part numbers are composed of three letters. The LAST LETTER indicates the key position and the contact type (male or female).

Front view of a socket 	Reference	Nb of keys	Angles	Series				Contact type	
				00	0B	1B	2B	Plug	Socket
	G	1		0°	0°	0°	0°	male	female
	A	2	α	30°	30°	30°	30°	male	female
	B	2		60°	60°	60°	45°	male	female
	C	2	β	—	90°	90°	60°	male	female
	D	2		—	135°	135°	95°	male	female
	E	2		—	145°	145°	120°	male	female
	F	2		—	155°	155°	145°	male	female
	J	2	γ	45°	45°	45°	37.5°	female	male
	K	2		—	70°	70°	52.5°	female	male
	L	2	δ	—	80°	80°	70°	female	male
	M	2		—	110°	—	—	female	male

Note:

- First choice alternative
- Special order alternative