

14 Pin Dip Clock Oscillator / Full Size

This oscillator series is available in TTL/HCMOS, HCMOS or TTL Logics with voltage of 3.3vdc or 5.0vdc. The B14 Series can be manufactured in 2 weeks or sooner in our New Jersey factory or large quantity in 5-6 weeks with low cost from our Asian factories. Applications include PC, Monitors, Computer Peripherals or any PCB application. It is mainly used in Portable PC, DVD, PDA, HDTV, Media Players, ISDN, Mobile Phone and Gb Ethernet Applications. All Bomar Oscillators meet the stringent testing for RoHS compliance. Tolerance to 10PPM and temperature to -40+85C.

Features

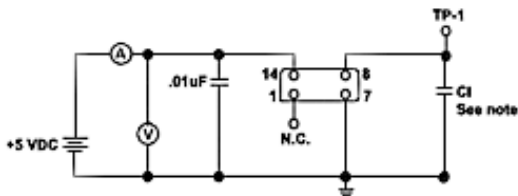
- 14 Pin Dip Design
- Pin 1 Fixed or Tri-State Enable/Disable
- TTL/HCMOS compatible
- Extended Temperature Available
- Fast delivery
- 3.3vdc or 5.0vdc

	TTL	HCMOS	Dual Compatible
Frequency Range	32kHz - 19.99MHz / 20.00 - 39.999MHz / 40.000 - 160.000 MHz		
Frequency Stability	10 PPM - 100 PPM		
Temperature Range (Operating)	0° to 70°C. Standard / -40° to +85°C Optional		
Temperature Range (Storage)	-55° to +125°C.		
Supply Voltage	+5VDC ±10% - Standard +3.3VDC ±10% Optional		
Current Consumption	25mA Max. / 40mA Max. / 60mA Max.		
Symmetry	45/55% @ 1.4VDC	45/55% @ 50%VDC	
Rise and Fall Time	6nS Max.	4nS Max.	
Logic "1"	Bomar Crystal Company sales@bomarcystal.com		4.5 VDC Min.
Logic "0"	0.1 VDC Max		0.5 VDC Max.
Output Load	1 - 10 TTL Gates / 1 - 10 TTL Gates / 1 - 5 TTL Gates		TTL: 10TTL/20pF / HCMOS: Up to 50pF

**Inclusive of 25°C. tolerance, operating temperature range, input voltage change, load change, aging, shock and vibration.*

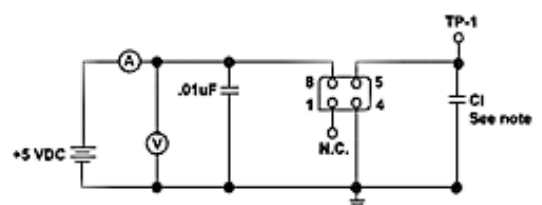
Full Size HCMOS / TTL		Half Size HCMOS / TTL	
Pins	Connections	Pins	Connections
1	NC or Tri-State	1	NC or Tri-State
7	GND	4	GND
8	Output	5	Output
14	+5VDC +-10%	8	+5VDC +-10%

Full Size HCMOS



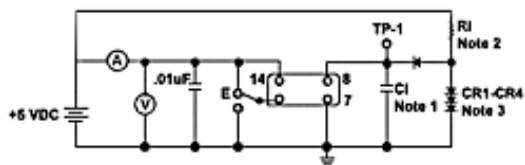
Note CI is 15pF typically and up to 50pF dependent on customer specifications including probe and test fixture

Half Size HCMOS



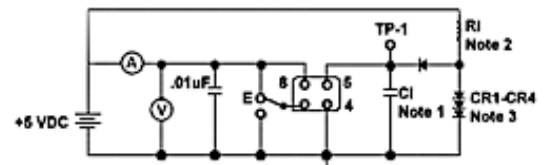
Note CI is 15pF typically and up to 50pF dependent on customer specifications including probe and test fixture

Tri - State Full Size



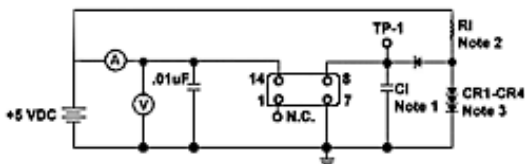
Notes: 1) 20pF (includes probe and test jig)
 2) RI=400 ohms - 10TTL
 3) All diodes are 1N941, 1N43064 or equivalent

Tri - State Half Size



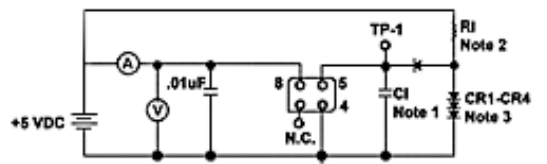
Notes: 1)20pF (includes probe and test jig) 2)RI=400 ohms - 10TTL
 3) All diodes are 1N941, 1N43064or equivalent

TTL Full Size



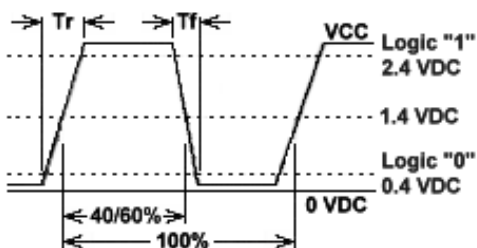
Notes: 1) 20pF (includes probe and test jig)
 2) RI=400 ohms - 10TTL
 3) All diodes are 1N941, 1N43064 or equivalent

TTL Half Size



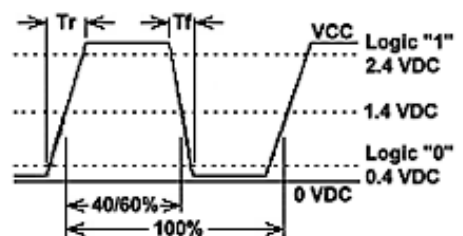
Notes: 1)20pF (includes probe and test jig)
 2)RI=400 ohms - 10TTL
 3)All diodes are 1N941, 1N43064 or equivalent

HCMOS / Dual Wave Shape



14 Pin DIP with Gull Wing Leads

TTL Wave Shape



8 Pin DIP with Gull Wing Leads

