

# Coaxial Amplifier

## ZHL-1-2W

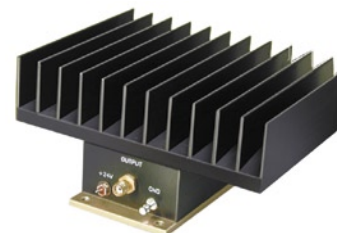
50Ω High Power 5 to 500 MHz

### Features

- wideband, 5 to 500 MHz
- high power output, +33 dBm min.
- high gain, +29 dB min.
- high IP3, +44 dBm typ.

### Applications

- VHF/UHF
- instrumentation
- laboratory



BNC version shown  
CASE STYLE: T35

Connectors	Model	Price	Qty.
BNC	ZHL-1-2W	\$525.00	(1-9)
SMA	ZHL-1-2W-S	\$535.00	(1-9)
N-TYPE	ZHL-1-2W-N	\$535.00	(1-9)

### Amplifier Electrical Specifications

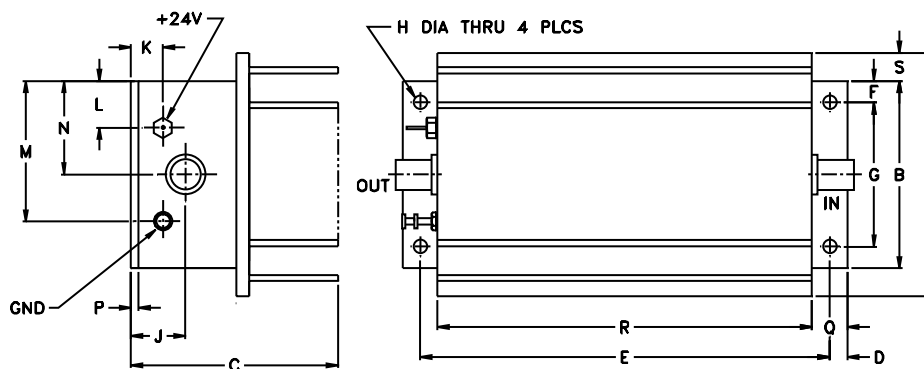
MODEL NO.	FREQUENCY (MHz)		GAIN (dB)		MAXIMUM POWER (dBm)		DYNAMIC RANGE		VSWR (:1)		DC POWER	
	$f_L$	$f_U$	Min.	Flatness Max.	Output (1 dB compr. min.)	Input (no damage)	NF (dB) Typ.	IP3 (dBm) Typ.	In	Out	Volt (V) Nom.	Current (A) Max.
ZHL-1-2W	5	500	29	±1.0	+33	+10	12	+44	2.0	2.0	24	0.9

Open load is not recommended, potentially can cause damage.  
With no load derate max input power by 20 dB

### Maximum Ratings

Operating Temperature	-20°C to 65°C
Storage Temperature	-55°C to 100°C
DC Voltage	+25V Max.

### Outline Drawing



### Outline Dimensions (inch/mm)

A	B	C	D	E	F	G	H	J		
4.75	2.00	2.37	.19	4.375	.23	1.540	.144	.58		
120.65	50.80	60.20	4.83	111.13	5.84	39.12	3.66	14.73		
K	L	M	N	P	Q	R	S	T	wt	
.34	.50	1.50	1.00	.12	.38	4.00	1.50	5.0	grams	
8.64	12.70	38.10	25.40	3.05	9.65	101.60	38.10	127.00	700.0	



INTERNET <http://www.minicircuits.com>

P.O. Box 350166, Brooklyn, New York 11235-0003 (718) 934-4500 Fax (718) 332-4661

Distribution Centers NORTH AMERICA 800-654-7949 • 417-335-5935 • Fax 417-335-5945 • EUROPE 44-1252-832600 • Fax 44-1252-837010

Mini-Circuits ISO 9001 & ISO 14001 Certified

REV. OR  
M98142  
ZHL-1-2W  
051228  
Page 1 of 2

FREQUENCY (MHz)	GAIN (dB)			DIRECTIVITY (dB)			VSWR (:1) 24V		NOISE FIGURE (dB)	POUT at 1 dB COMPR. (dBm)
	23V	24V	24.5V	23V	24V	24.5	IN	OUT		
5.00	32.84	32.87	32.92	25.30	26.00	26.10	1.25	1.33	—	34.98
11.30	32.45	32.47	32.50	25.90	26.70	26.00	1.07	1.32	6.11	35.08
33.40	32.41	32.42	32.45	25.80	23.80	24.30	1.16	1.32	6.06	35.42
98.80	33.72	33.78	33.83	24.90	25.40	22.60	1.58	1.33	5.63	35.07
195.40	34.00	34.10	34.19	21.90	21.60	22.50	1.77	1.22	5.82	34.36
246.20	33.64	33.73	33.84	20.00	19.90	19.50	1.86	1.24	5.95	34.34
309.60	33.47	33.57	33.67	17.10	17.70	18.00	1.82	1.76	6.09	35.54
373.10	33.77	33.89	34.02	15.90	16.10	17.60	1.46	1.95	6.45	34.85
436.50	33.15	33.35	33.54	17.60	17.20	17.60	1.15	1.54	6.98	34.71
500.00	32.49	32.80	33.14	22.50	20.60	20.80	1.83	1.81	7.28	33.90

