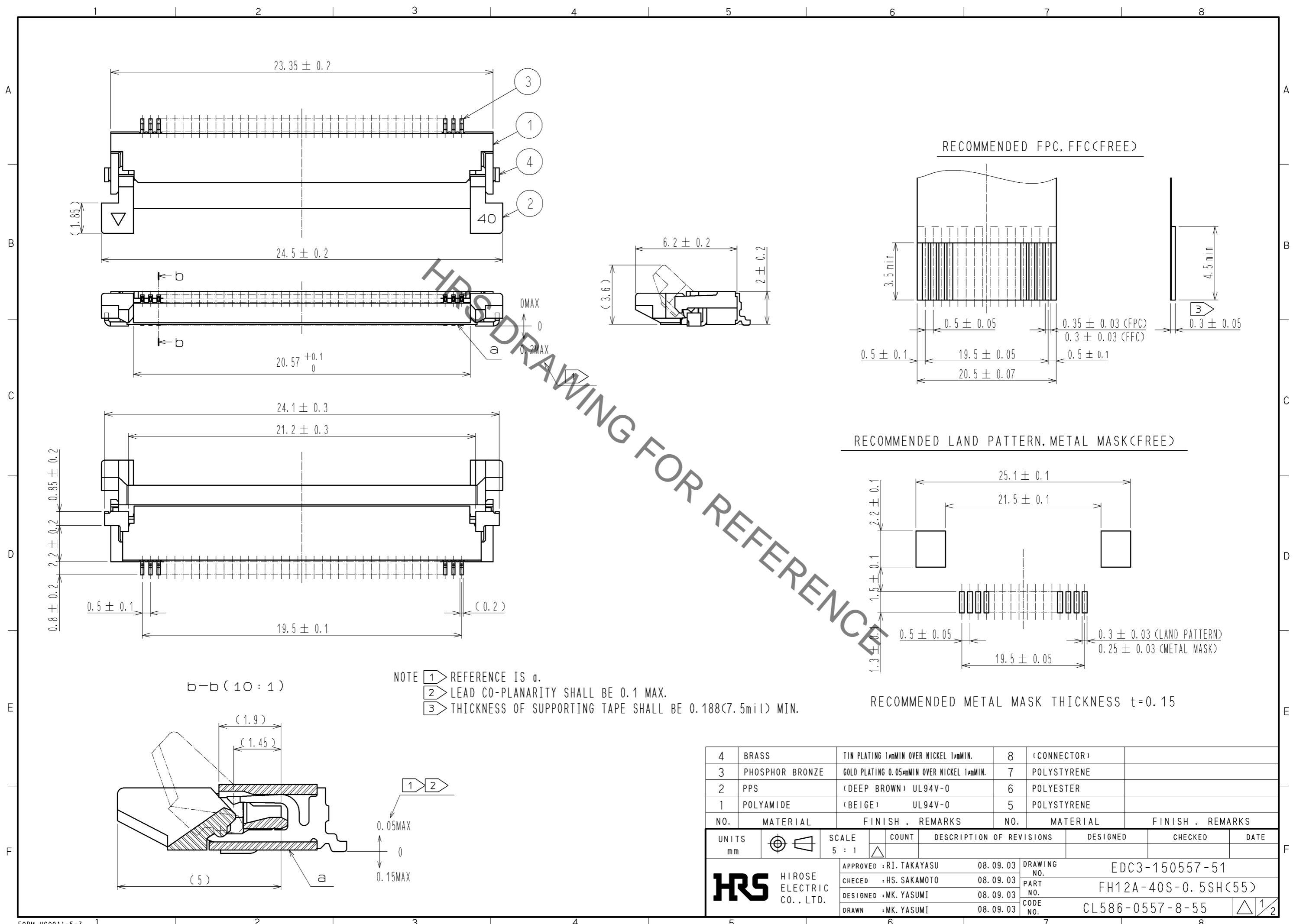


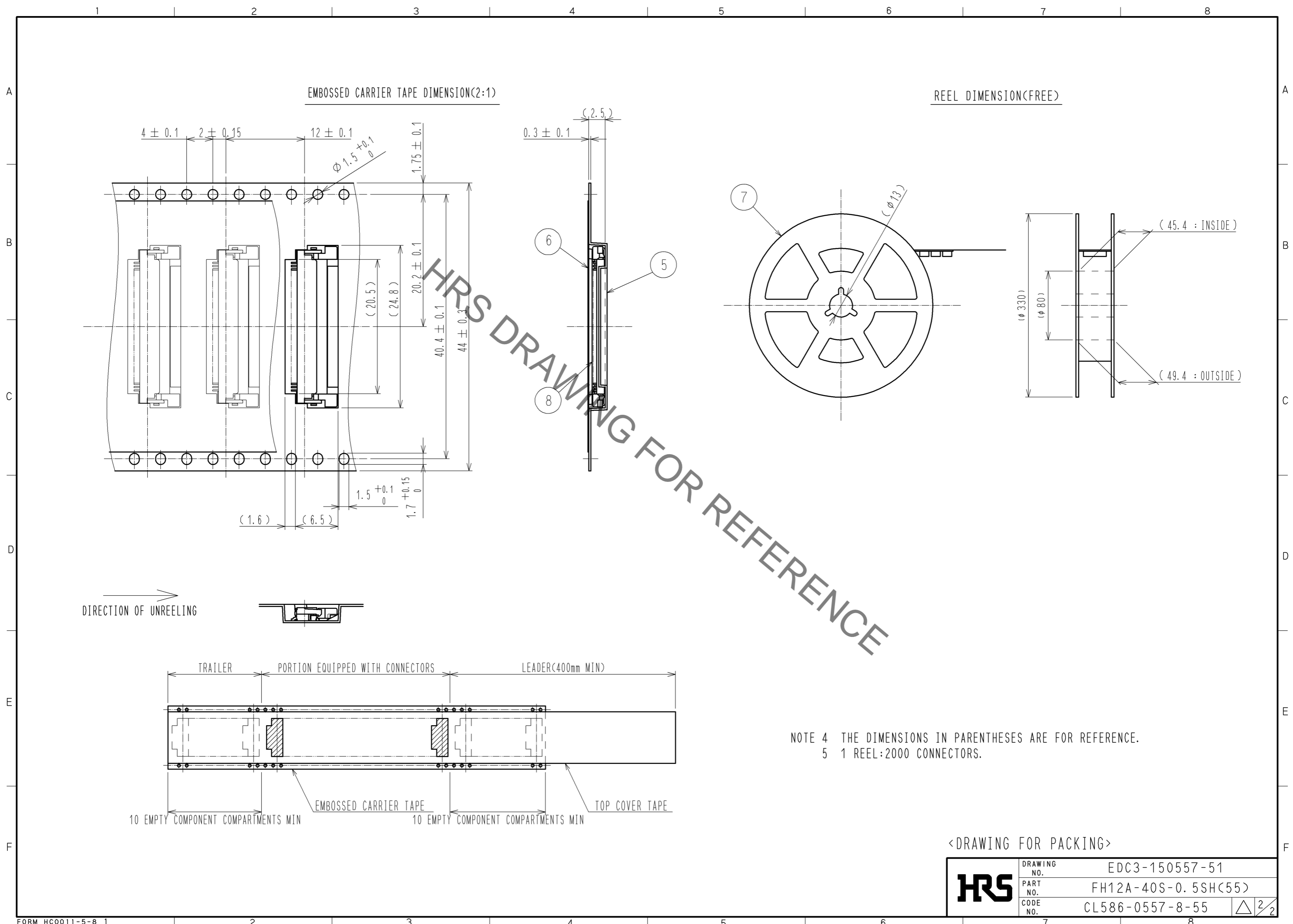
Sep.1.2020 Copyright 2020 HIROSE ELECTRIC CO., LTD. All Rights Reserved.  
In case of consideration for using Automotive equipment / device which demand high reliability, kindly contact our sales window correspondents.



NOTE ① REFERENCE IS a.  
② LEAD CO-PLANARITY SHALL BE 0.1 MAX.  
③ THICKNESS OF SUPPORTING TAPE SHALL BE 0.188(7.5mil) MIN.

4	BRASS	TIN PLATING 1μMIN OVER NICKEL 1μMIN.	8	(CONNECTOR)				
3	PHOSPHOR BRONZE	GOLD PLATING 0.05μMIN OVER NICKEL 1μMIN.	7	POLYSTYRENE				
2	PPS	(DEEP BROWN) UL94V-0	6	POLYESTER				
1	POLYAMIDE	(BEIGE) UL94V-0	5	POLYSTYRENE				
NO.	MATERIAL	FINISH . REMARKS	NO.	MATERIAL	FINISH . REMARKS			
UNITS	mm	SCALE	5 : 1	COUNT	DESCRIPTION OF REVISIONS	DESIGNED	CHECKED	DATE
APPROVED : RI. TAKAYASU		08.09.03		DRAWING NO.		EDC3-150557-51		
CHECKED : HS. SAKAMOTO		08.09.03		PART NO.		FH12A-40S-0.5SH(55)		
DESIGNED : MK. YASUMI		08.09.03		CODE NO.		CL586-0557-8-55		
DRAWN : MK. YASUMI		08.09.03						

Sep.1.2020 Copyright 2020 HIROSE ELECTRIC CO., LTD. All Rights Reserved.  
 In case of consideration for using Automotive equipment / device which demand high reliability, kindly contact our sales window correspondents.



HRS DRAWING FOR REFERENCE

NOTE 4 THE DIMENSIONS IN PARENTHESES ARE FOR REFERENCE.  
 5 1 REEL:2000 CONNECTORS.

<DRAWING FOR PACKING>

<b>HRS</b>	DRAWING NO.	EDC3-150557-51
	PART NO.	FH12A-40S-0.5SH(55)
	CODE NO.	CL586-0557-8-55
		△ 2/2

# Mouser Electronics

Authorized Distributor

Click to View Pricing, Inventory, Delivery & Lifecycle Information:

[Hirose Electric:](#)

[FH12A-40S-0.5SH\(55\)](#)