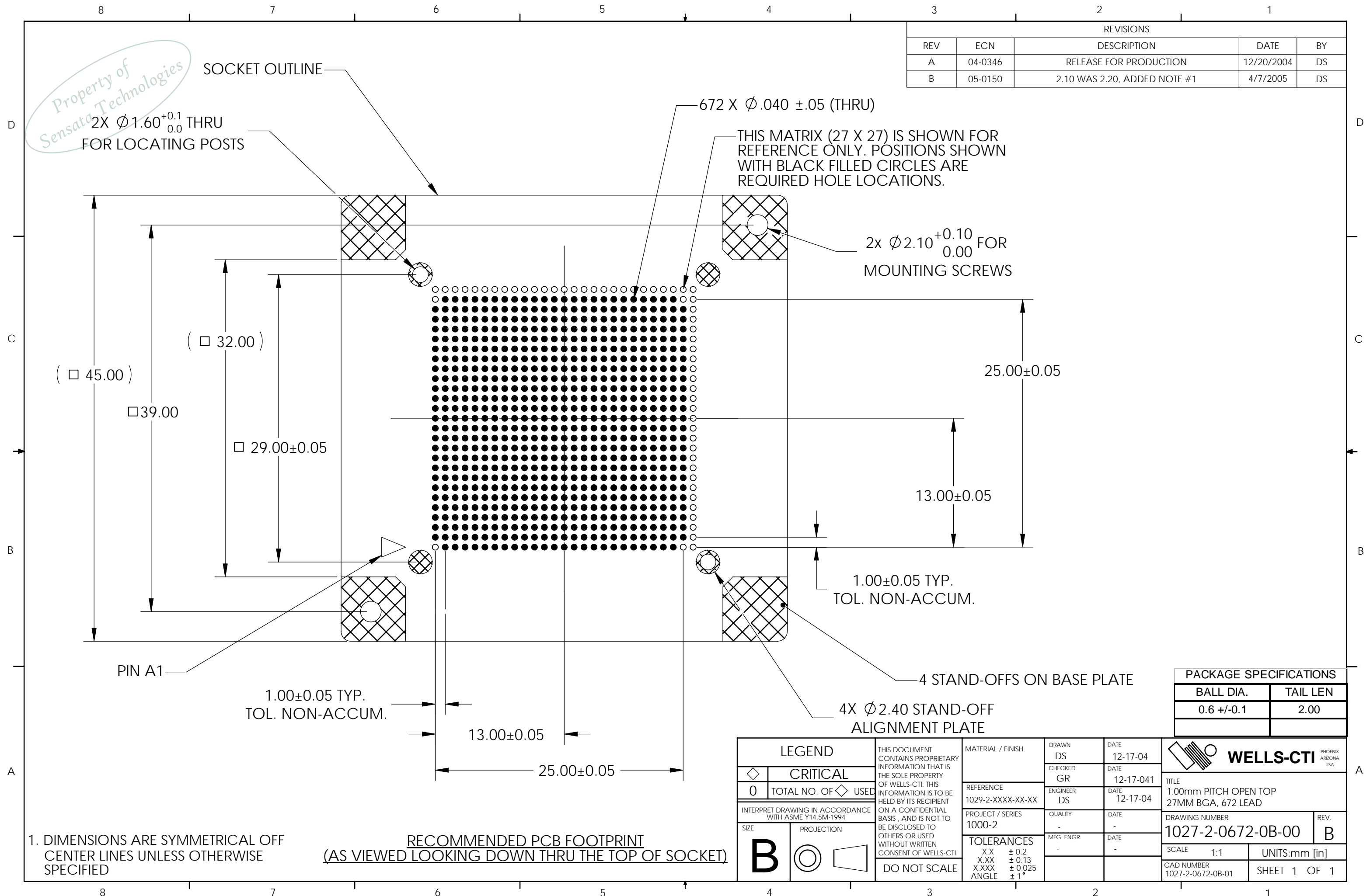


Property of
Sensata Technologies

REVISIONS				
REV	ECN	DESCRIPTION	DATE	BY
A	04-0346	RELEASE FOR PRODUCTION	12/20/2004	DS
B	05-0150	2.10 WAS 2.20, ADDED NOTE #1	4/7/2005	DS



1. DIMENSIONS ARE SYMMETRICAL OFF CENTER LINES UNLESS OTHERWISE SPECIFIED

PACKAGE SPECIFICATIONS	
BALL DIA.	TAIL LEN
0.6 +/-0.1	2.00

LEGEND ◊ CRITICAL 0 TOTAL NO. OF ◊ USED	THIS DOCUMENT CONTAINS PROPRIETARY INFORMATION THAT IS THE SOLE PROPERTY OF WELLS-CTI. THIS INFORMATION IS TO BE HELD BY ITS RECIPIENT ON A CONFIDENTIAL BASIS, AND IS NOT TO BE DISCLOSED TO OTHERS OR USED WITHOUT WRITTEN CONSENT OF WELLS-CTI. DO NOT SCALE	MATERIAL / FINISH	DRAWN DS	DATE 12-17-04	
		REFERENCE 1029-2-XXXX-XX-XX	CHECKED GR	DATE 12-17-04	
INTERPRET DRAWING IN ACCORDANCE WITH ASME Y14.5M-1994	PROJECT / SERIES 1000-2 TOLERANCES X.X ± 0.2 X.XX ± 0.13 X.XXX ± 0.025 ANGLE ± 1°	QUALITY -	ENGINEER DS	DATE 12-17-04	TITLE 1.00mm PITCH OPEN TOP 27MM BGA, 672 LEAD DRAWING NUMBER 1027-2-0672-0B-00 SCALE 1:1 UNITS:mm [in]
SIZE B PROJECTION		MFG. ENGR. -	DATE -	REV. B	



TITLE 1.00mm PITCH OPEN TOP 27MM BGA, 672 LEAD
 DRAWING NUMBER 1027-2-0672-0B-00
 SCALE 1:1 UNITS:mm [in]
 CAD NUMBER 1027-2-0672-0B-01 SHEET 1 OF 1