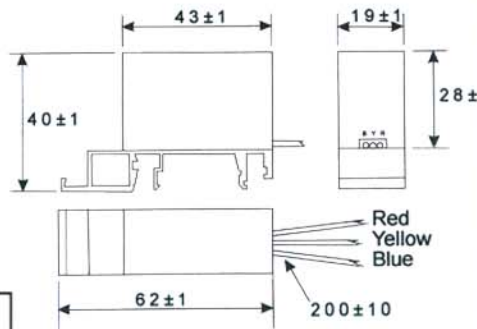
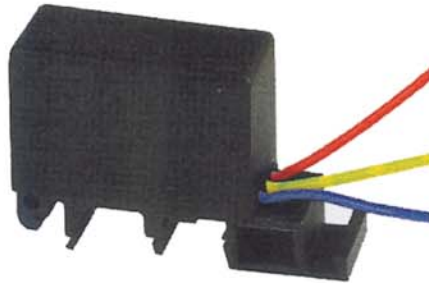


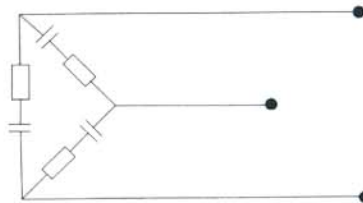
These resistor capacitor suppressors are designed to reduce contact arcing where inductive loads are involved, thereby increasing the life of their contacts.

The unit is designed for power applications with delta connections, for 3 - phase uses, and displays a high degree of reliability in various types of high voltage equipment.



CHARACTERISTICS	
Capacitors :	0.01 - 0.1 μ F x 3
Capacitance Tolerance :	\pm 10 and 20%
Resistors :	47-470ohm \pm 5% 4 watt x 3
Operating Voltage :	500 V RMS (MAX)
Supply Frequency :	50 / 60 Hz
Operating Temperature :	- 40°C to + 70°C
Insulation Resistance :	100 M Ω (500V)

Circuit Diagram DELTA Construction



DIN Rail Mounting:
Top Hat
(EN50022, DIN46277-3 BS5584)

G. Profile
(EN50035, DIN46277-1 BS5825)

Other capacitor/Resistor values, case shapes and terminations are available.

Sales Office Tel : (01495) 307070

Fax : (01495) 306965

LCR
Capacitors

