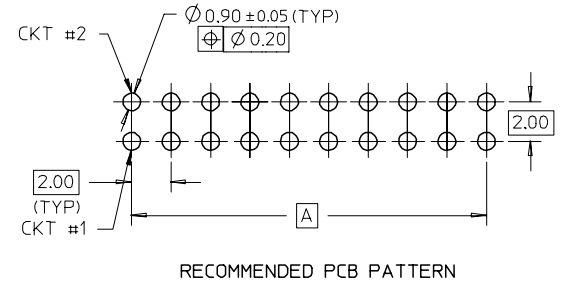
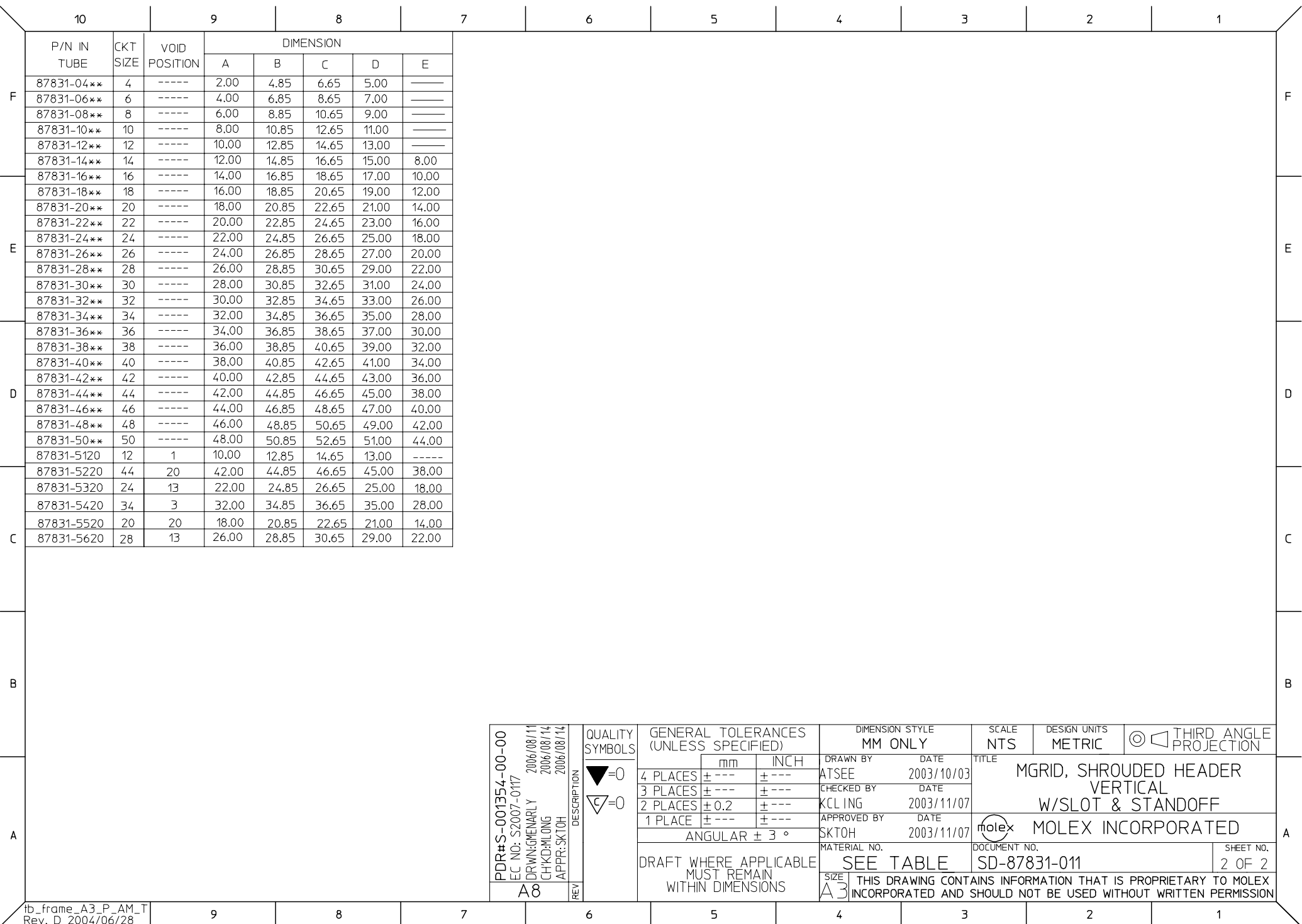


**PART NUMBER LEGEND :**  
 87831 - \* \* \* \* \*  
 PLATING OPTION  
 19 - 0.05-0.13um/2-5uin GOLD IN CONTACT AREA AND 1.88um/75uin MIN.TIN IN SOLDER TAIL AREA OVER 1.27um/50uin MIN. NICKEL OVERALL.  
 20 - 0.38um/15uin GOLD IN CONTACT AREA AND 1.88um/75uin MIN.TIN IN SOLDER TAIL AREA OVER 1.27um/50uin MIN. NICKEL OVERALL.  
 21 - 0.76um/30uin GOLD IN CONTACT AREA AND 1.88um/75uin MIN.TIN IN SOLDER TAIL AREA OVER 1.27um/50uin MIN. NICKEL OVERALL.



- NOTES:**
- FOR ILLUSTRATION PURPOSES, 20 CIRCUIT SIZE WAFER IS SHOWN.
  - MATERIAL :  
HOUSING : 30% G.F., NYLON 46, UL94V-0, COLOR BLACK.  
PIN : 0.50MM SQ.PHOSPHOR BRONZE.
  - PRODUCT SPECIFICATION PS-87831-027 APPLIES.
  - NO CENTRE POLARIZATION SLOT FOR CKT SIZE 4 AND 6.
  - NO SIDE LOCKING SLOT FROM 4 TO 12 CKT SIZE.
  - CKT 4 & 6 HAS NO IDENTIFICATION TAG.
  - REFER TO PART 87831-\*\*4\* FOR CENTRE LOCKING SLOT OPTION FOR 4 TO 12 CKT.
  - THIS HEADER MATES WITH MOLEX :  
a) CRIMP RECEPTACLE HOUSING, 51110 SERIES WITH CRIMP TERMINAL, 50394 SERIES.  
b) 2MM MILLIGRID DUAL ROW IDT, 87568 SERIES.

PDR#S-001354-00-00 EC NO: S2007-0117 DRWN:GEMENARLY 2006/08/11 CHKD:M LONG 2006/08/14 APPR:SKTOH 2006/08/14	QUALITY SYMBOLS ▽=0 ▽=0	GENERAL TOLERANCES (UNLESS SPECIFIED)		DIMENSION STYLE MM ONLY		SCALE NTS	DESIGN UNITS METRIC	THIRD ANGLE PROJECTION		
		4 PLACES ± --- ± ---	3 PLACES ± --- ± ---	2 PLACES ± 0.2 ± ---	1 PLACE ± --- ± ---	DRAWN BY DATE ATSEE 2003/10/03		TITLE MGRID, SHROUDED HEADER VERTICAL W/SLOT & STANDOFF		MOLEX MOLEX INCORPORATED
		ANGULAR ± 3 °				CHECKED BY DATE KCLING 2003/11/07		APPROVED BY DATE SKTOH 2003/11/07		
		DRAFT WHERE APPLICABLE MUST REMAIN WITHIN DIMENSIONS		SEE TABLE		MATERIAL NO.		DOCUMENT NO. SD-87831-011		



	P/N IN TUBE	CKT SIZE	VOID POSITION	DIMENSION				
				A	B	C	D	E
F	87831-04**	4	-----	2.00	4.85	6.65	5.00	-----
	87831-06**	6	-----	4.00	6.85	8.65	7.00	-----
	87831-08**	8	-----	6.00	8.85	10.65	9.00	-----
	87831-10**	10	-----	8.00	10.85	12.65	11.00	-----
	87831-12**	12	-----	10.00	12.85	14.65	13.00	-----
	87831-14**	14	-----	12.00	14.85	16.65	15.00	8.00
	87831-16**	16	-----	14.00	16.85	18.65	17.00	10.00
	87831-18**	18	-----	16.00	18.85	20.65	19.00	12.00
	87831-20**	20	-----	18.00	20.85	22.65	21.00	14.00
	87831-22**	22	-----	20.00	22.85	24.65	23.00	16.00
E	87831-24**	24	-----	22.00	24.85	26.65	25.00	18.00
	87831-26**	26	-----	24.00	26.85	28.65	27.00	20.00
	87831-28**	28	-----	26.00	28.85	30.65	29.00	22.00
	87831-30**	30	-----	28.00	30.85	32.65	31.00	24.00
	87831-32**	32	-----	30.00	32.85	34.65	33.00	26.00
	87831-34**	34	-----	32.00	34.85	36.65	35.00	28.00
	87831-36**	36	-----	34.00	36.85	38.65	37.00	30.00
	87831-38**	38	-----	36.00	38.85	40.65	39.00	32.00
	87831-40**	40	-----	38.00	40.85	42.65	41.00	34.00
	87831-42**	42	-----	40.00	42.85	44.65	43.00	36.00
D	87831-44**	44	-----	42.00	44.85	46.65	45.00	38.00
	87831-46**	46	-----	44.00	46.85	48.65	47.00	40.00
	87831-48**	48	-----	46.00	48.85	50.65	49.00	42.00
	87831-50**	50	-----	48.00	50.85	52.65	51.00	44.00
	87831-5120	12	1	10.00	12.85	14.65	13.00	-----
	87831-5220	44	20	42.00	44.85	46.65	45.00	38.00
	87831-5320	24	13	22.00	24.85	26.65	25.00	18.00
	87831-5420	34	3	32.00	34.85	36.65	35.00	28.00
	87831-5520	20	20	18.00	20.85	22.65	21.00	14.00
C	87831-5620	28	13	26.00	28.85	30.65	29.00	22.00

PDR#S-001354-00-00 EC NO: S2007-0117 DRWN:GMENARLY 2006/08/11 CHKD:M LONG 2006/08/14 APPR:SKTOH 2006/08/14	QUALITY SYMBOLS	GENERAL TOLERANCES (UNLESS SPECIFIED)		DIMENSION STYLE MM ONLY		SCALE NTS	DESIGN UNITS METRIC	THIRD ANGLE PROJECTION																
	$\nabla=0$ $\nabla C=0$	<table border="1"> <tr><td>4 PLACES</td><td>± ---</td><td>± ---</td></tr> <tr><td>3 PLACES</td><td>± ---</td><td>± ---</td></tr> <tr><td>2 PLACES</td><td>± 0.2</td><td>± ---</td></tr> <tr><td>1 PLACE</td><td>± ---</td><td>± ---</td></tr> </table>	4 PLACES	± ---	± ---	3 PLACES	± ---	± ---	2 PLACES	± 0.2	± ---	1 PLACE	± ---	± ---	<table border="1"> <tr><td>mm</td><td>INCH</td></tr> </table>	mm	INCH	DRAWN BY ATSEE	DATE 2003/10/03	TITLE MGRID, SHROUDED HEADER VERTICAL W/SLOT & STANDOFF	MOLEX INCORPORATED			
	4 PLACES	± ---	± ---																					
	3 PLACES	± ---	± ---																					
2 PLACES	± 0.2	± ---																						
1 PLACE	± ---	± ---																						
mm	INCH																							
	ANGULAR ± 3 °	APPROVED BY SKTOH	DATE 2003/11/07	MATERIAL NO.	DOCUMENT NO. SD-87831-011	SHEET NO. 2 OF 2																		
	DRAFT WHERE APPLICABLE MUST REMAIN WITHIN DIMENSIONS	SIZE A3	SEE TABLE			THIS DRAWING CONTAINS INFORMATION THAT IS PROPRIETARY TO MOLEX INCORPORATED AND SHOULD NOT BE USED WITHOUT WRITTEN PERMISSION																		