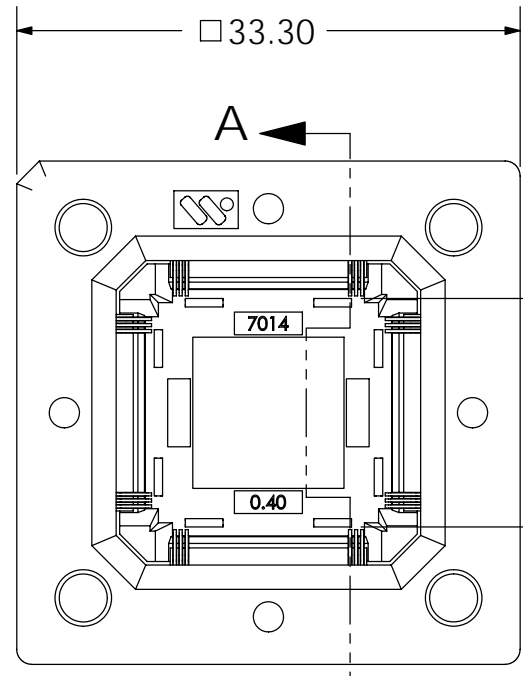
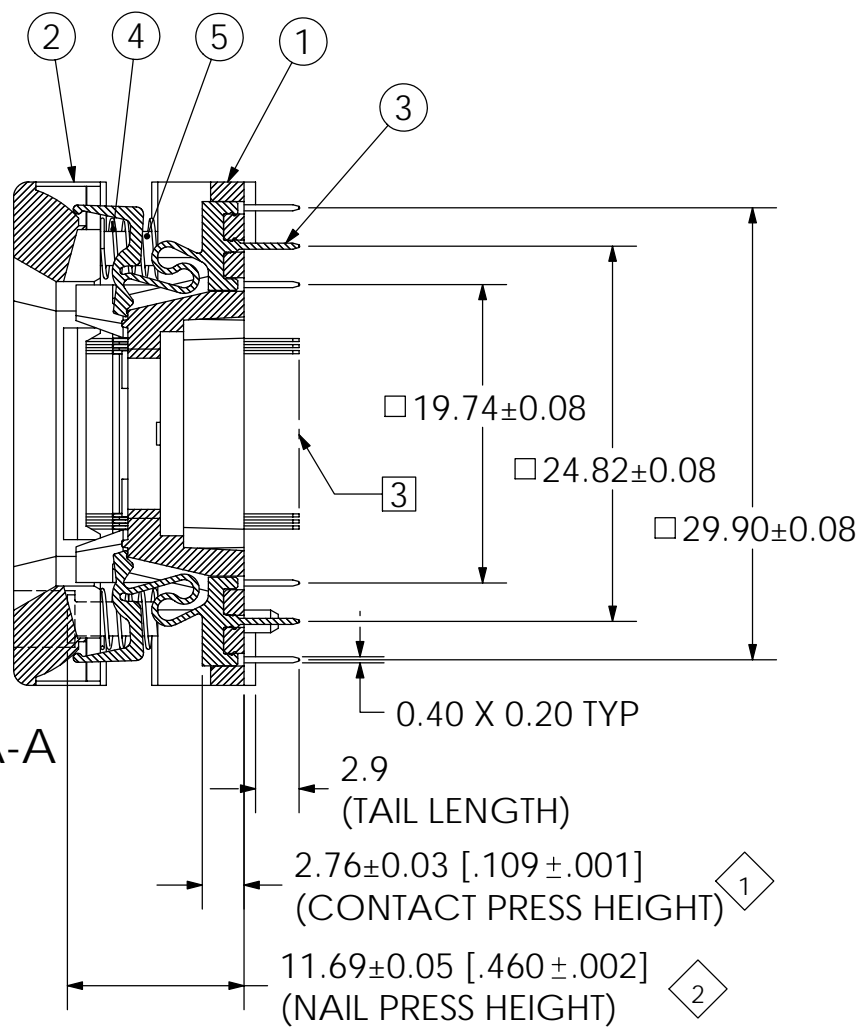


REVISIONS				
REV	ECN	DESCRIPTION	DATE	BY
B	01-0441	GENERAL DRAWING UPDATES	12/3/01	PH
B1	04-0038	GENERAL DRAWING UPDATES	3/18/04	GP
C	04-0271	SEPARATED FROM 3014 GENERIC DRAWING	11/4/2004	PH

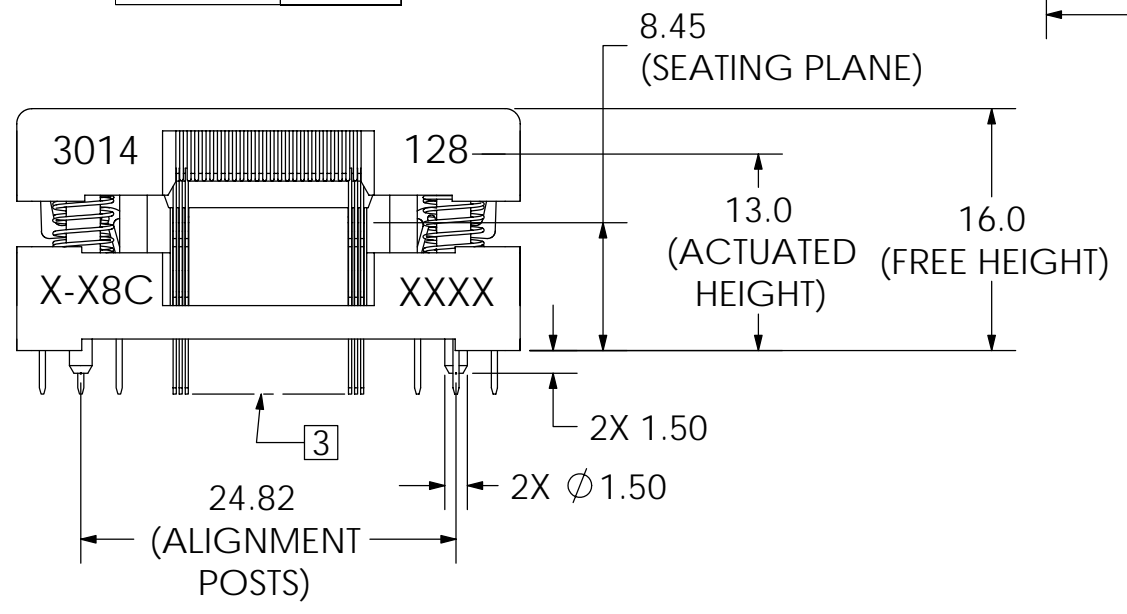


RAIL DIMENSION  $+0.00$   
 $-0.06$   
(4 PLACES)



SECTION A-A

PART NUMBER	RAIL DIM
3014-128-X-18	14.56
3014-128-X-28	14.67
3014-128-X-38	14.78
3014-128-X-48	14.89
3014-128-X-58	15.00
3014-128-X-68	15.11



**3014-128 - X - X 8 C**

SOCKET ASSEMBLY REVISION

1 - 6 = RAIL POSITIONS\*  
\* REQUIRES FACTORY DEVICE FIT UP

Contact Plating  
 0 = BeCu w/ Au (Overall) (-X8 contact)  
 1 = BeCu w/ Au & SnPb (Select) (-X9 contact)  
 2 = BeCu w/ NiB (-X3 contact)  
 3 = Pfin w/ Au (Overall) (-X8 contact)  
 4 = Pfin w/ Au & SnPb (Select) (-X9 contact)  
 5 = Pfin w/ NiB (-X3 contact)

ITEM	PART NUMBER	QTY	DESCRIPTION
1	001-492-0X	1	SOCKET BASE
2	001-493-00	1	SOCKET LID
3	002-086-XX	128	CONTACT
4	005-027-00	4	COMPRESSION SPRING
5	006-027-00	4	CORNER NAIL

3 SOCKET IS POPULATED PER DWG. F3014-128, CONTACTS REMOVED FOR CLARITY.

2 MARKING: 2.0 HIGH, COLOR - WHITE. LOCATE AS SHOWN.

1 MATERIAL AND FINISH:  
 SOCKET LID AND BASE - POLYETHERIMIDE.  
 CONTACTS - PFINODAL, SEE CHART FOR PLATING.  
 NAILS AND SPRINGS - STAINLESS STEEL - PASSIVATED.

LEGEND		MATERIAL / FINISH	DRAWN PH	DATE 11/4/04	
◇	CRITICAL				
2	TOTAL NO. OF ◇ USED	PROJECT / SERIES 3014	ENGINEER PH	DATE 11/4/04	TITLE REDUCED FORCE OFP 14mm SQ. PACKAGE FAMILY 0.40MM PITCH
INTERPRET DRAWING IN ACCORDANCE WITH ASME Y14.5M-1994		TOLERANCES	QUALITY	DATE	DRAWING NUMBER 3014-128-X-X8 C
SIZE <b>B</b>	PROJECTION	X.X ± 0.3 X.XX ± 0.13 X.XXX ± 0.025 ANGLE ± 1°	MFG. ENGR.	DATE	SCALE 2:1 UNITS:mm [in]
DO NOT SCALE					CAD NUMBER 3014-128-X-X8.SLDDRW

PHOENIX ARIZONA USA

REVISION C

SHEET 1 OF 1