

**“LAN-MATE”SERIES
SINGLE RJ45 CONNECTOR MODULE WITH INTEGRATED
10/100 BASE-TX MAGNETICS**

- Complies with requirement of IEEE 802.3u standards.
- RJ-45 connector integrated with transformer/impedance resistor/high voltage capacitor.
- Size same as RJ-45 connector to save PCB board space.
- Reduced EMI radiation to improve EMI performance.
- Design for 10/100 BASE transmission over UTP-5 cable.
- Compliance with ROHS requirements.
- Operating temperature range: 0 to +70 .
- Storage temperature range: -25 to +85



S



T

Electrical specifications @ 25

Part Number	Turns Ratio (±5%)		OCL (uH Min) @ 100 KHz/0.1V with 8mA DC Bias	C _{www} (pF Max)	L.L (uH Max)	Insertion Loss (dB Max) 0.3-100MHz	HI-POT (Vrms)
	TX	RX					
KLU1S041 LF	1CT:1CT	1CT:1CT	350	28	0.4	-1.15	1500
KLU1S041RX LF	1CT:1CT	1CT:1CT	350	56	0.4	-1.15	1500
KLU1S041C LF	1CT:1CT	1CT:1CT	350	28	0.4	-1.15	1500
KLU1S041F LF	1CT:1CT	1CT:1CT	350	28	0.4	-1.15	1500
KLU1S041X LF	1CT:1CT	1CT:1CT	350	56	0.4	-1.15	1500
KLU1T041CX LF	1CT:1CT	1CT:1CT	350	56	0.5	-1.15	1500
KLU1S516 LF	1CT:1	1CT:1CT	350	28	0.4	-1.15	1500
KLU1S516E1 LF	1CT:1	1CT:1CT	350	--	--	-1.15	1500
KLU1S041A LF	1CT:1CT	1CT:1CT	350	28	0.4	-1.15	1500

Continue

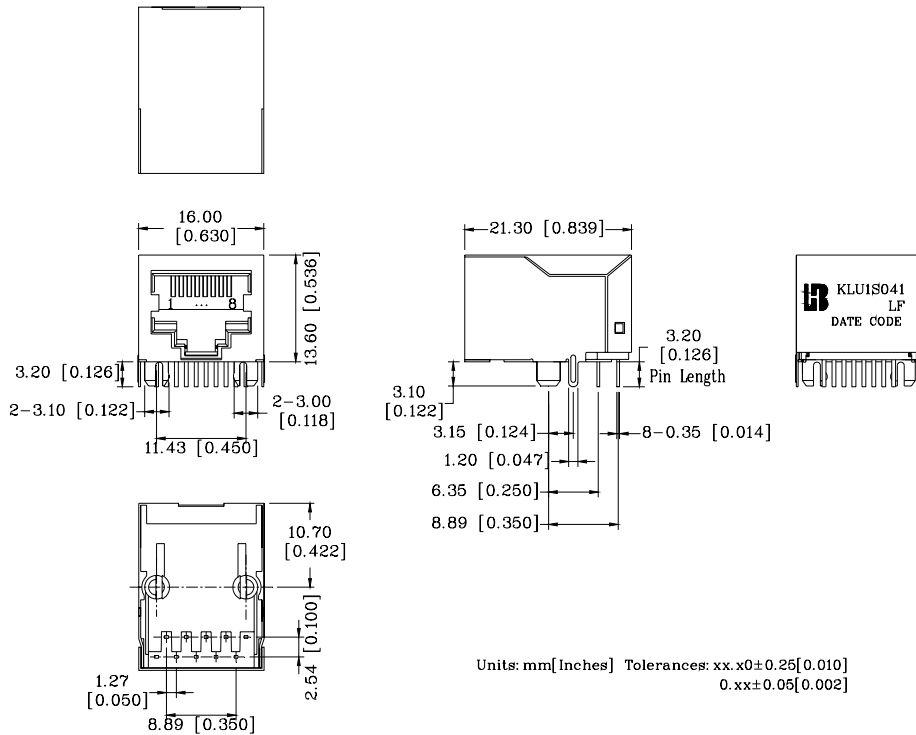
Number	Return Loss (dB Min)					Cross talk (dB Min)			CMR (dB Min)		
	30MHz	40MHz	50MHz	60MHz	80MHz	0.3-30MHz	30-60MHz	60-100MHz	1-30MHz	30-60MHz	60-125MHz
KLU1S041 LF	-16	-14	-13.5	-13	-10	-40	-35	-30	-30	-25	-20
KLU1S041RX LF	-16	-14	-13.5	-13	-10	-40	-35	-30	-30	-25	-20
KLU1S041C LF	-16	-14	-13.5	-13	-10	-40	-35	-30	-30	-25	-20
KLU1S041F LF	-16	-14	-13.5	-13	-10	-40	-35	-30	-30	-25	-20
KLU1S041X LF	-16	-14	-13.5	-13	-10	-40	-35	-30	-30	-25	-20
KLU1T041CX LF	-16	-14	-13.5	-13	-10	-40	-35	-30	-30	-25	-20
KLU1S516 LF	-16	-14	-13.5	-13	-10	-40	-35	-30	-30	-25	-20
KLU1S516E1 LF	-16	-14	-13.5	-13	-10	-40	-35	-30	-30	-25	-20
KLU1S041A LF	-16	-14	-13.5	-13	-10	-40	-35	-30	-30	-25	-20

For customized parts or more detailed information, please log on www.bothhandusa.com or write to sales@bothhandusa.com

**“LAN-MATE” SERIES
SINGLE RJ45 CONNECTOR MODULE WITH INTEGRATED
10/100 BASE-TX MAGNETICS**

Mechanicals

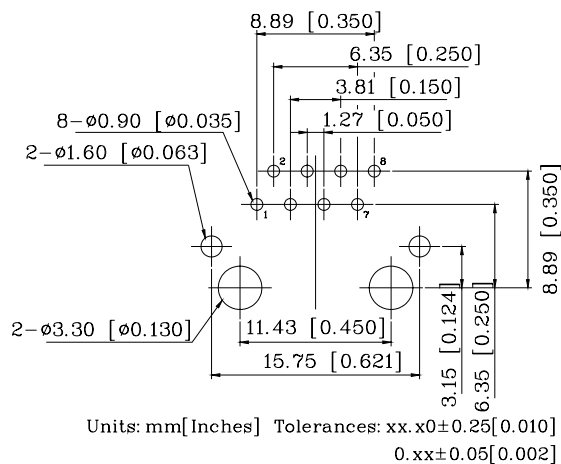
KLU1SXXXX LF



- | | | |
|---------------------|---|---|
| 1. Plastic Material | : | Thermoplastic (UL 94V-0), Black Housing |
| 2. Metal Shield | : | Brass, 20u" inches thick Nickel |
| 3. Spring Wire | : | Phosphor bronze with selective gold plating |
| 4. Solder Pin | : | 0.5x0.35mm, SUS430 with solder Plated |
| 5. Durability | : | 750 Mating cycles Min. |

PCB Layout Mounting Hole (Top View)

KLU1XXXX LF

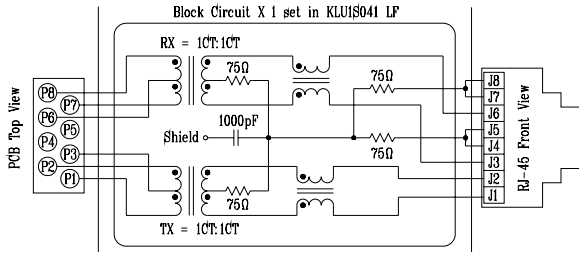


“LAN-MATE” SERIES SINGLE RJ45 CONNECTOR MODULE WITH INTEGRATED 10/100 BASE-TX MAGNETICS

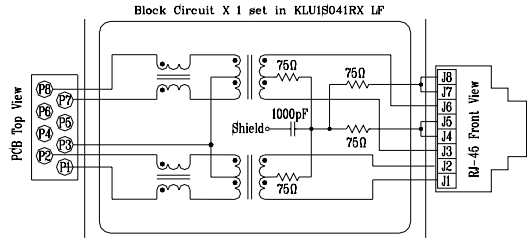
Specification	Packing Manner	Q'ty per Tube/Reel	Q'ty/ Inner box	Q'ty/ Carton
KLU1SXXX LF	TUBE	30	480	1920
KLU1TXXX LF	TUBE	26	416	1664

Schematics

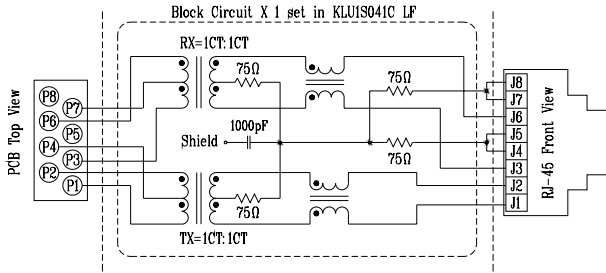
KLU1S041 LF



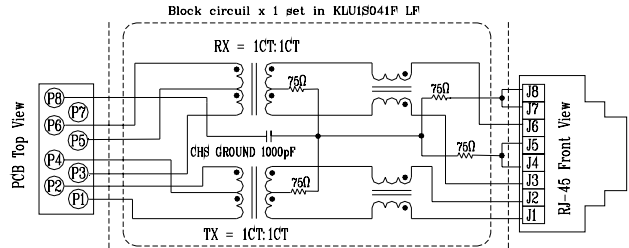
KLU1S041RX LF



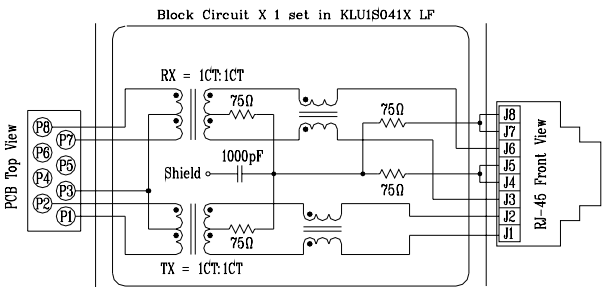
KLU1S041C LF



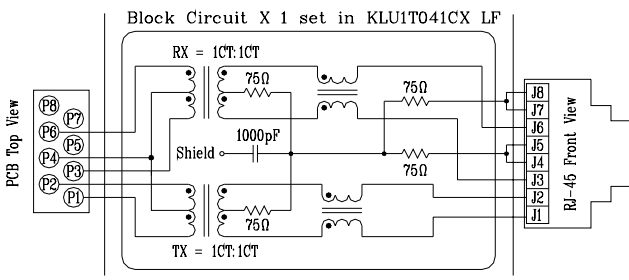
KLU1S041F LF



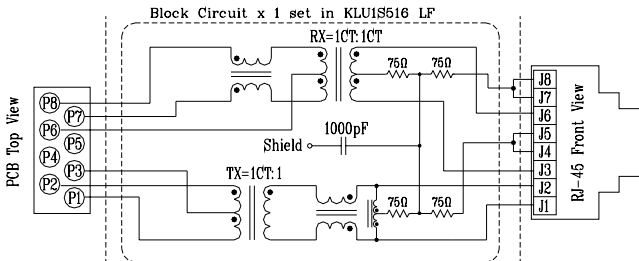
KLU1S041X LF



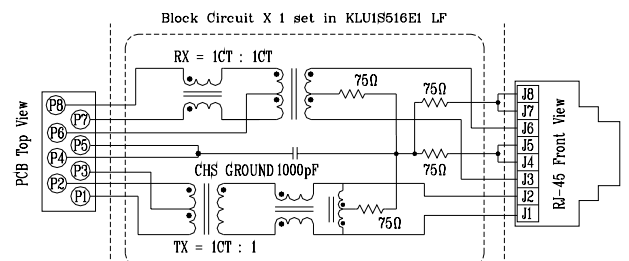
KLU1T041CX LF



KLU1S516 LF

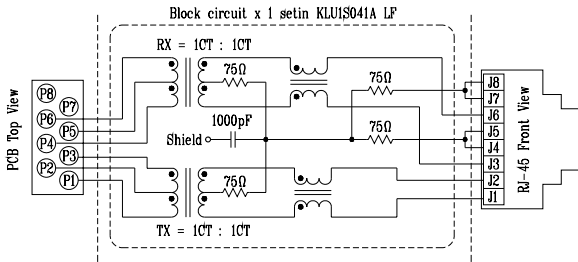


KLU1S516E1 LF



**“LAN-MATE” SERIES
SINGLE RJ45 CONNECTOR MODULE WITH INTEGRATED
10/100 BASE-TX MAGNETICS**

KLU1S041A LF



Part Numbering System

Example BHJack Part Number:

K	L	U	1	S	041	LF
代表非 MD 機構	TAB DOWN RJ-45 JACK	100 BASE (802.3U)	Number of parts “1” : single port	Shield type S: standard shield T: with spring tab on top and side D: spring tab on side E: spring tab on top	for different circuit	RoHS