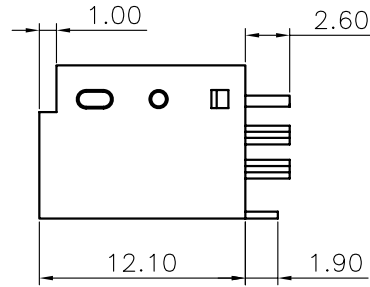
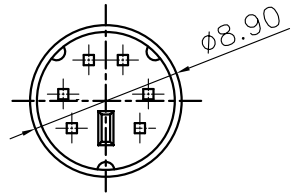


REV.	DESCRIPTION	DRAWN	CHECKED	APPROVED
A	NEW RELEASE	LL 07/23/06'		

Male

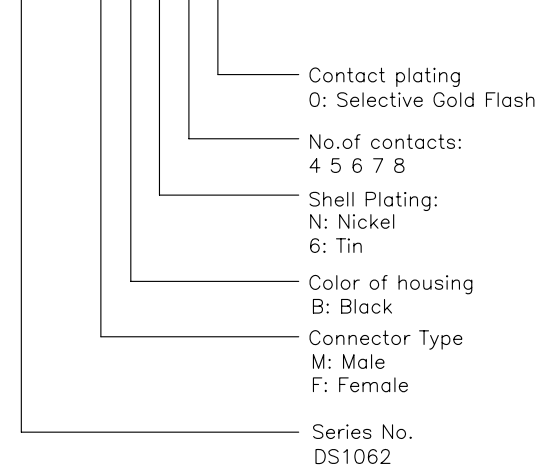


NOTES:

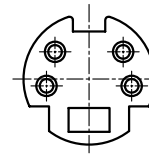
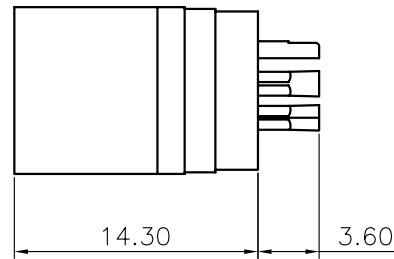
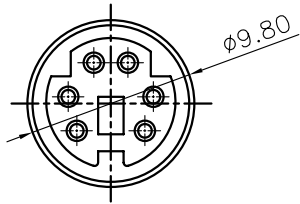
- SPECIFICATIONS:
 - VOLTAGE RATING: 30V DC.
 - CONTACT CURRENT RATING: 1A MAX. PER PIN.
 - CONTACT RESISTANCE: 30 mΩ MAX.
 - DIELECTRIC WITHSTANDING VOLTAGE: 500V AC(rms) FOR 1 MINUTE.
 - INSULATION RESISTANCE: 1000 MΩ MIN.
 - OPERATING TEMPERATURE: -20°C~+80°C.

2. PRODUCT NUMBER CODE:

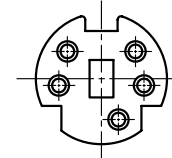
DS1062 - X X X X X



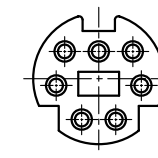
Female



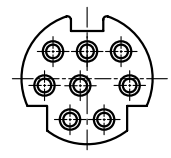
4 PIN



5 PIN



7 PIN



8 PIN

OTHER PINS FIGURE

GENERAL TOLERANCE		ANGLE TOLERANCE		PROJECTION		TITLE	MINI DIN TYPE				
X.	±0.60	X.	±5°	UNITS	mm	SERIES		DS1062 SERIES			
.X	±0.38	.X	±3°	SHEET SIZE	A4	MDN-4F MDN-4M MDN-6F MDN-6M MDN-7M MDN-8F MDN-8M					
.XX	±0.25	.XX	±2°			MDN-9M					
DRAWING TYPE		CUSTOMER									
SCALE		1:1	SHEET		1 OF 1						
DRAWING NO.		C-DS1062-XXXXX									