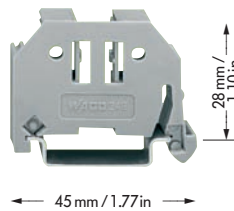
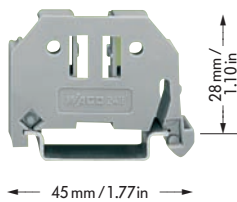


# End Stop for DIN 35 Rail

End stop for DIN 35 rail, End stop width 6 mm / 0.236 in	End stop for DIN 35 rail, End stop width 10 mm / 0.394 in	
---	--	--



Item No.	Pack.-unit pcs	Item No.	Pack.-unit pcs
End stop, for DIN 35 rail 6 mm / 0.236 in wide		End stop, for DIN 35 rail 10 mm / 0.394 in wide	
<b>249-116</b>	100 (4 x 25)	<b>249-117</b>	50 (2 x 25)

## Application notes

Fit – and forget! Assembling the new WAGO screwless end stop is as simple and quick as snapping a WAGO rail-mounted terminal block onto the rail.

### Without any tools!

This way rail-mounted terminal blocks are safely secured, at low cost, against any movement on all carrier rails DIN 35 acc. to DIN EN 50022 (35 x 7.5 mm; 35 x 15 mm).

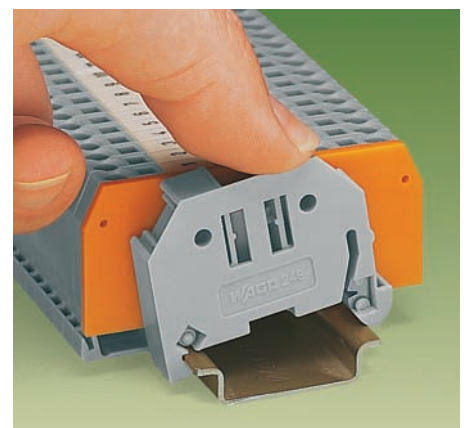
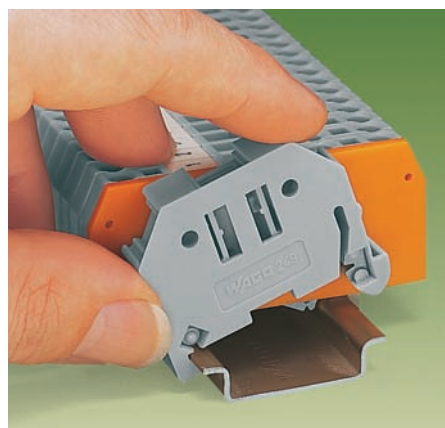
### Entirely without screws!

The “secret” of the excellent tight fit lies in the two small clamping plates which keep the end stop in position, even if the rails are mounted vertically.

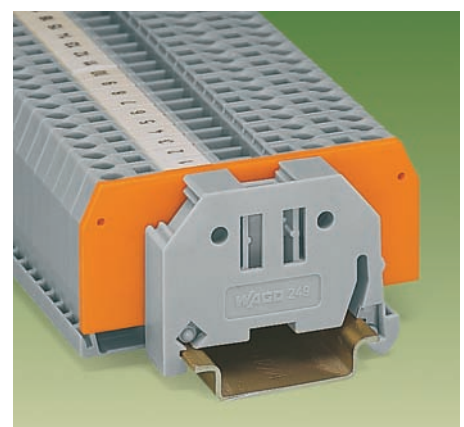
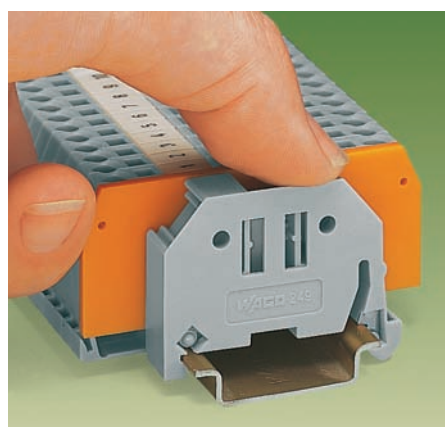
### Simply snap on and forget!

In addition, costs are considerably reduced when using large numbers of end stops.

A further advantage is that three marker receptacles for all WAGO marker systems for rail-mounted terminal blocks and a snap-in hole for WAGO adjustable height group marker carriers offer individual marking possibilities.



Snap on . . .



. . . that's it!