

20 19 18 17 16 15 14 13 12 11 10 9 8 7 6 5 4 3 2 1

M

L

K

J

I

H

G

F

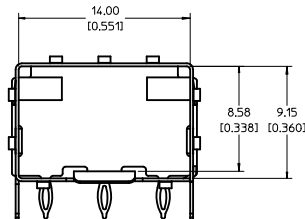
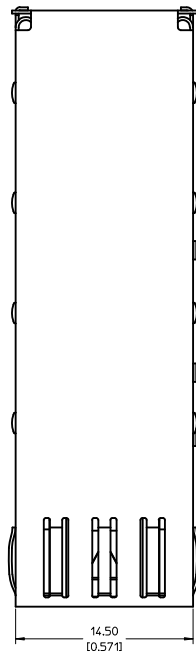
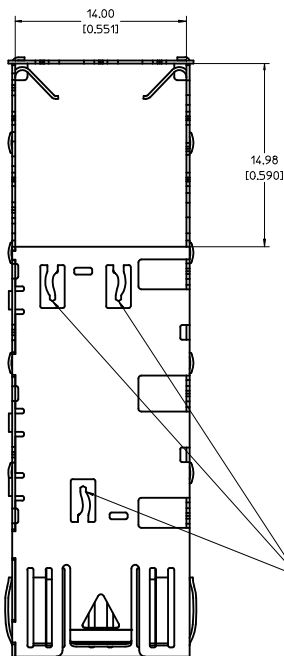
E

D

C

B

A



NOTES:

1. PRESS FIT LEGS, 0.120 INCHES LONG.
1.57 [0.062] MINIMUM PCB THICKNESS.
2. THIS CAGE IS FOR SINGLE SIDED USE ONLY.
3. CAN BE USED WITH THE FOLLOWING LIGHT PIPE PART NUMBERS:

747260001 - LIGHT PIPE FROM BACK TO TOP
(REFER TO DOCUMENT SD-74726-001)

747260002 - LIGHT PIPE FROM SIDE TO TOP
(REFER TO DOCUMENT SD-74726-002)

4. MATERIAL: COPPER ALLOY
PLATING: PRE-PLATED WITH NICKEL

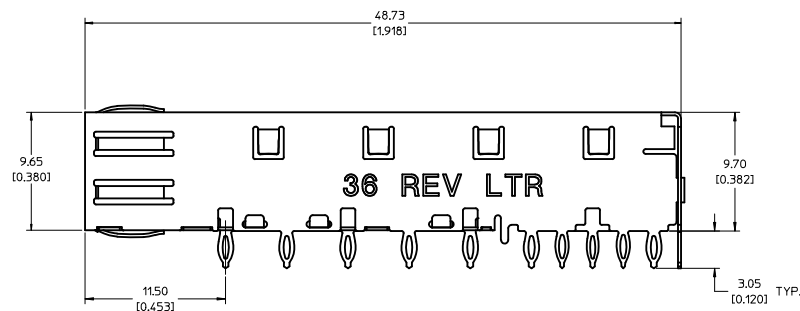
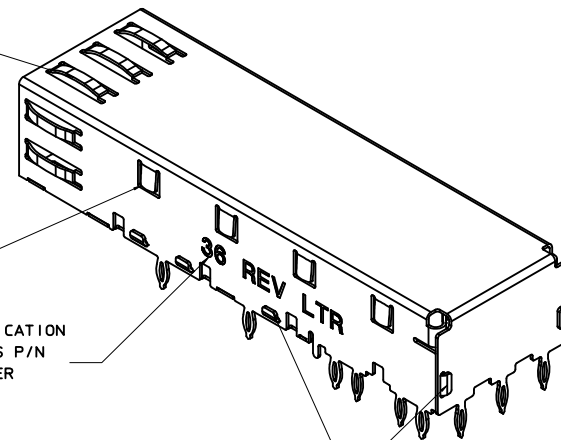
5. THIS PART MEETS THE RESTRICTION OF HAZARDOUS SUBSTANCES IN
ELECTRICAL AND ELECTRONIC EQUIPMENT (ROHS) DIRECTIVE (2002/95/EC).

SPRING FINGER GASKET WITH
TWO POINTS OF CONTACT.
COMPLIES WITH (SFP) MSA
BOARD AND BEZEL LOCATIONS.

TABS USED TO MOUNT
LIGHT PIPE COVER

CAGE IDENTIFICATION
LAST 2 DIGITS P/N
AND REV LETTER
(ex: 36 X)

ONE PIECE DESIGN
SECURLY FASTENED

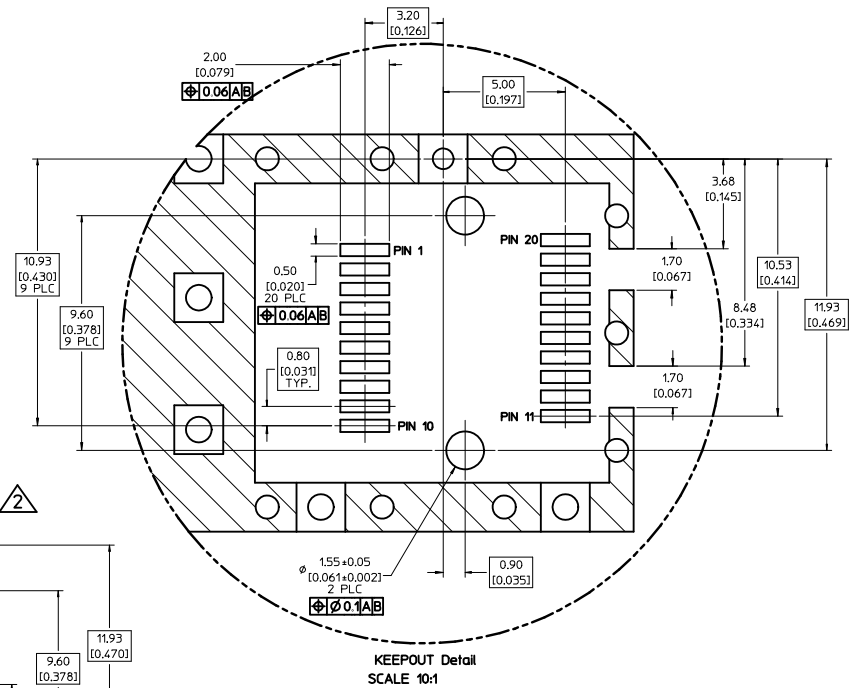
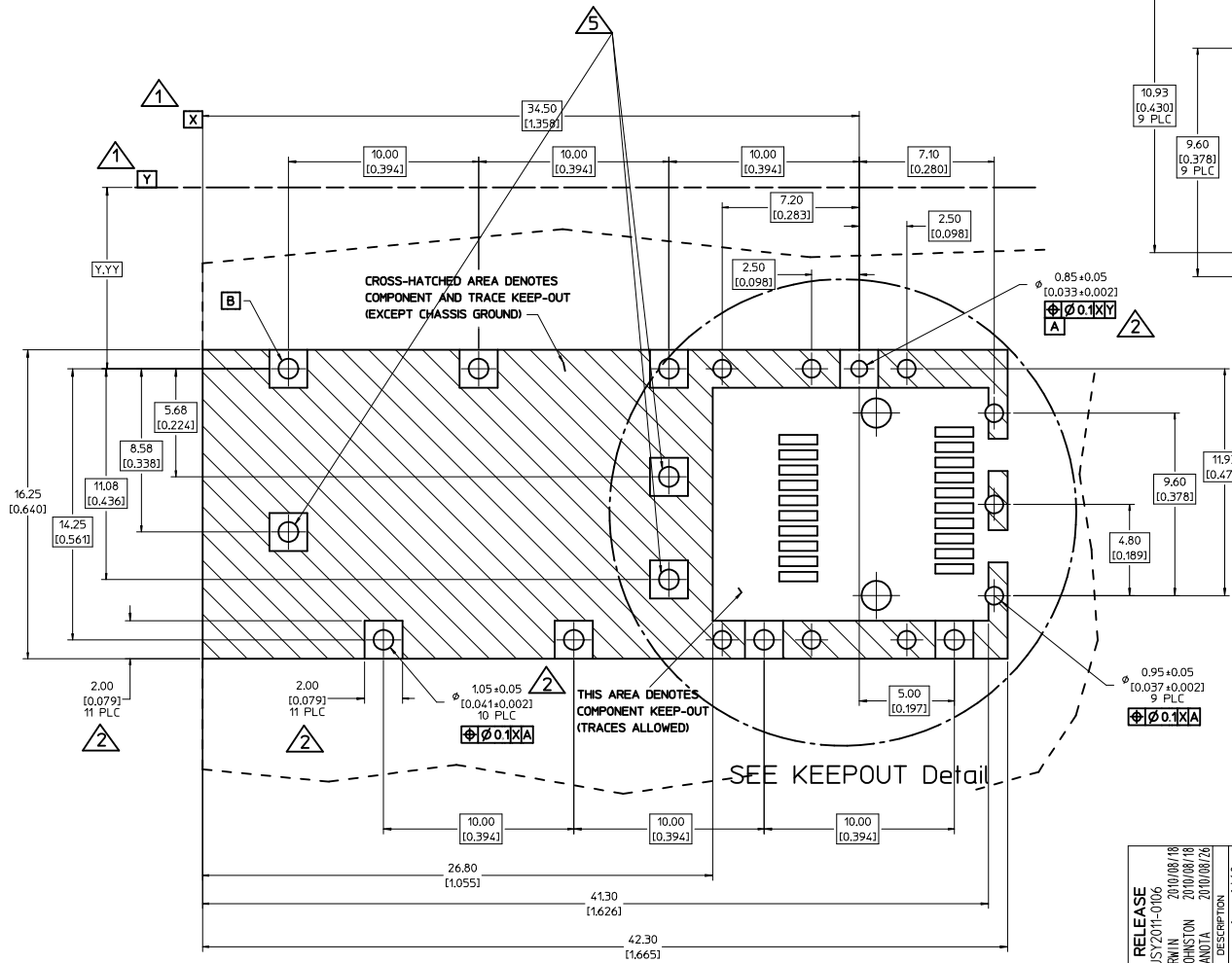


INITIAL RELEASE EC NO: USY2011-0106 DRAWN: JERWIN 2010/08/18 CHECKED: CHYKDA JOHNSTON 2010/08/18 APPROVED: K JANOTA 2010/08/26 REV DESCRIPTION	QUALITY SYMBOLS ▽=0 ▽=0	GENERAL TOLERANCES (UNLESS SPECIFIED)		DIMENSION STYLE MM/IN		SCALE 5:1	DESIGN UNITS METRIC	THIRD ANGLE PROJECTION
		mm		INCH		DRAWN BY JERWIN	DATE 2010/08/18	TITLE SFP ONE PIECE CAGE PRESS-FIT (0.120 LEGS) NO EMI PINS
		4 PLACES ± ---		± ---		CHECKED BY A JOHNSTON	DATE 2010/08/18	MOLEX INCORPORATED
		3 PLACES ± ---		± .005				
		2 PLACES ± 0.13		± .01				
		1 PLACE ± 0.25		± ---				
ANGULAR ± 1 °								
DRAFT WHERE APPLICABLE MUST REMAIN WITHIN DIMENSIONS				MATERIAL NO. 747370036		DOCUMENT NO. SD-74737-0036		SHEET NO. 1 OF 4
				SIZE D		THIS DRAWING CONTAINS INFORMATION THAT IS PROPRIETARY TO MOLEX INCORPORATED AND SHOULD NOT BE USED WITHOUT WRITTEN PERMISSION		

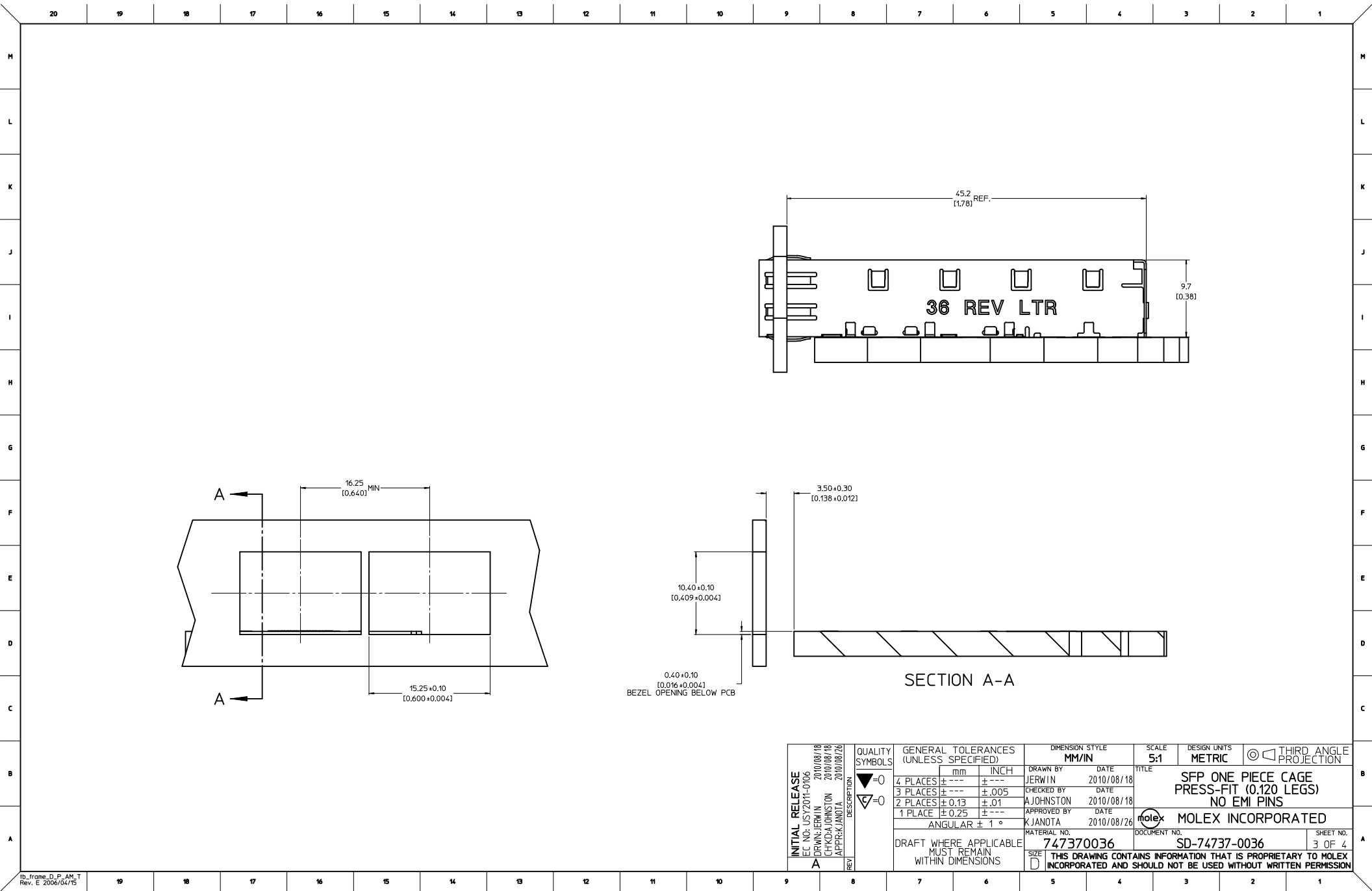
19 18 17 16 15 14 13 12 11 10 9 8 7 6 5 4 3 2 1



20 19 18 17 16 15 14 13 12 11 10 9 8 7 6 5 4 3 2 1

- 1 DATUM AND BASIC DIMENSIONS ESTABLISHED BY CUSTOMER.
- 2 PADS AND VIAS ARE CHASSIS GROUND.
- 3 HOLE LAYOUT SHOWN IS FOR SINGLE SIDED MOUNTING ONLY.
4. CONNECTOR PAD LAYOUT PER SFP MSA. WILL ACCOMODATE MOLEX CONNECTOR SERIES 74441 OR EQUIVALENT.
5. THESE HOLES OPTIONAL.



INITIAL RELEASE EC NO. USY2011-0106 DRAWN: JERWIN CHECKED: CHYKOA JOHNSTON APPROVED: K JANOTA DATE: 2010/08/18 DATE: 2010/08/18 DATE: 2010/08/26	DESCRIPTION	QUALITY SYMBOLS ▽=0 ▽=0	GENERAL TOLERANCES (UNLESS SPECIFIED)		DIMENSION STYLE MM/IN		SCALE 8:1		DESIGN UNITS METRIC		THIRD ANGLE PROJECTION	
			mm		INCH		DRAWN BY JERWIN		DATE 2010/08/18		SFP ONE PIECE CAGE PRESS-FIT (0.120 LEGS) NO EMI PINS	
			4 PLACES ± --- ± ---				CHECKED BY A JOHNSTON		DATE 2010/08/18			
			3 PLACES ± --- ± .005				APPROVED BY K JANOTA		DATE 2010/08/26			
			2 PLACES ± 0.13 ± .01				MATERIAL NO. 747370036		DOCUMENT NO. SD-74737-0036		SHEET NO. 2 OF 4	
			1 PLACE ± 0.25 ± ---				SIZE D		THIS DRAWING CONTAINS INFORMATION THAT IS PROPRIETARY TO MOLEX INCORPORATED AND SHOULD NOT BE USED WITHOUT WRITTEN PERMISSION			
			ANGULAR ± 1 °									
DRAFT WHERE APPLICABLE MUST REMAIN WITHIN DIMENSIONS												

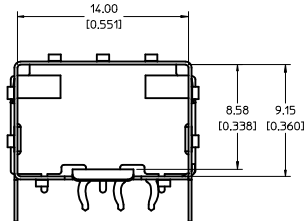
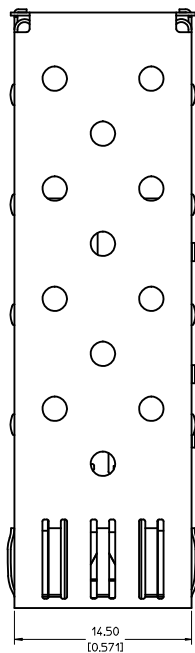
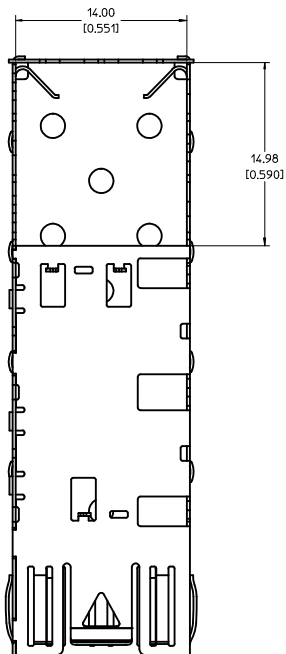


INITIAL RELEASE EC NO: USY2011-0106 DRAWN: JERWIN CHECKED: AJOHNSTON APPROVED: KJANOTA A	DESCRIPTION REV	QUALITY SYMBOLS ▽=0 ▽=0	GENERAL TOLERANCES (UNLESS SPECIFIED)		DIMENSION STYLE MM/IN		SCALE 5:1	DESIGN UNITS METRIC	 THIRD ANGLE PROJECTION	TITLE SFP ONE PIECE CAGE PRESS-FIT (0.120 LEGS) NO EMI PINS		
			mm	INCH	DRAWN BY JERWIN	DATE 2010/08/18						
			4 PLACES ± ---	± ---	CHECKED BY AJOHNSTON	DATE 2010/08/18						
			3 PLACES ± ---	± .005	APPROVED BY KJANOTA	DATE 2010/08/26						
			2 PLACES ± 0.13		± .01						 MOLEX INCORPORATED	
			1 PLACE ± 0.25		± ---							
			ANGULAR ± 1 °									
			DRAFT WHERE APPLICABLE MUST REMAIN WITHIN DIMENSIONS				MATERIAL NO. 747370036		DOCUMENT NO. SD-74737-0036		SHEET NO. 3 OF 4	
							SIZE D					
							THIS DRAWING CONTAINS INFORMATION THAT IS PROPRIETARY TO MOLEX INCORPORATED AND SHOULD NOT BE USED WITHOUT WRITTEN PERMISSION					

[illegible]

INITIAL RELEASE EC NO. USJ2010-006 DRAWN: JERWIN 2010/08/18 CHECKED: JAWON 2010/08/18 APPROVED: JAWON 2010/08/26	QUALITY SYMBOLS	GENERAL TOLERANCES (UNLESS SPECIFIED)	DIMENSION STYLE	SCALE	DESIGN UNITS	THIRD ANGLE PROJECTION															
	$\nabla=0$ $\nabla=0$	<table border="1"> <thead> <tr> <th></th> <th>mm</th> <th>INCH</th> </tr> </thead> <tbody> <tr> <td>4 PLACES</td> <td>$\pm .01$</td> <td>$\pm .0005$</td> </tr> <tr> <td>3 PLACES</td> <td>$\pm .01$</td> <td>$\pm .005$</td> </tr> <tr> <td>2 PLACES</td> <td>$\pm .013$</td> <td>$\pm .01$</td> </tr> <tr> <td>1 PLACE</td> <td>$\pm .025$</td> <td>$\pm 1^{\circ}$</td> </tr> </tbody> </table>		mm	INCH	4 PLACES	$\pm .01$	$\pm .0005$	3 PLACES	$\pm .01$	$\pm .005$	2 PLACES	$\pm .013$	$\pm .01$	1 PLACE	$\pm .025$	$\pm 1^{\circ}$	MM/IN	1:1	METRIC	
		mm	INCH																		
	4 PLACES	$\pm .01$	$\pm .0005$																		
	3 PLACES	$\pm .01$	$\pm .005$																		
2 PLACES	$\pm .013$	$\pm .01$																			
1 PLACE	$\pm .025$	$\pm 1^{\circ}$																			
DESCRIPTION			DRAWN BY DATE JERWIN 2010/08/18 CHECKED BY DATE AJOHNSTON 2010/08/18 APPROVED BY DATE KJANOTA 2010/08/26	TITLE	SFP ONE PIECE CAGE PRESS-FIT (.0120 LEGS) NO EMI PINS																
REV			MATERIAL NO. 747370036 SIZE D	MOLEX INCORPORATED DOCUMENT NO. SD-74737-0036	SHEET NO. 4 OF 4																
DRAFT WHERE APPLICABLE MUST REMAIN WITHIN DIMENSIONS			THIS DRAWING CONTAINS INFORMATION THAT IS PROPRIETARY TO MOLEX INCORPORATED AND SHOULD NOT BE USED WITHOUT WRITTEN PERMISSION																		

20 19 18 17 16 15 14 13 12 11 10 9 8 7 6 5 4 3 2 1



MOLEX PN	PLATING
747370010	PRE-PLATED WITH NICKEL
747370034	POST PLATED WITH MATTE TIN

NOTES:

1. THIS CAGE IS FOR SINGLE SIDED USE ONLY.
2. CAN BE USED WITH THE FOLLOWING LIGHT PIPE PART NUMBERS:

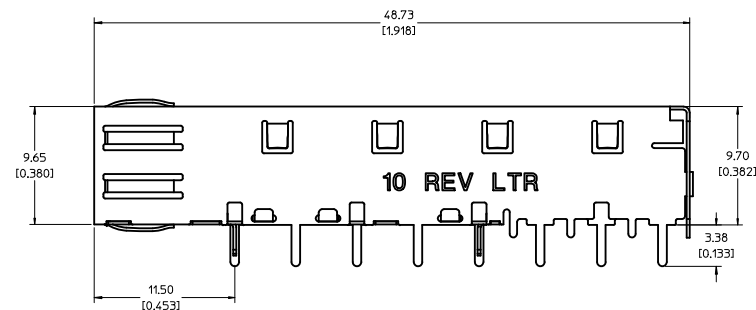
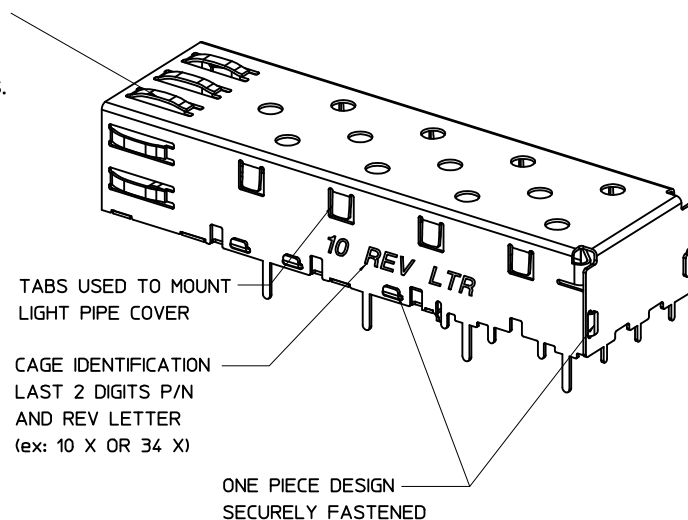
747260001 - LIGHT PIPE FROM BACK TO TOP
(REFER TO DOCUMENT SD-74726-001)


747260002 - LIGHT PIPE FROM SIDE TO TOP
(REFER TO DOCUMENT SD-74726-002)

3. MATERIAL: COPPER ALLOY

4. THIS PART MEETS THE RESTRICTION OF HAZARDOUS SUBSTANCES IN ELECTRICAL AND ELECTRONIC EQUIPMENT (ROHS) DIRECTIVE (2002/95/EC).

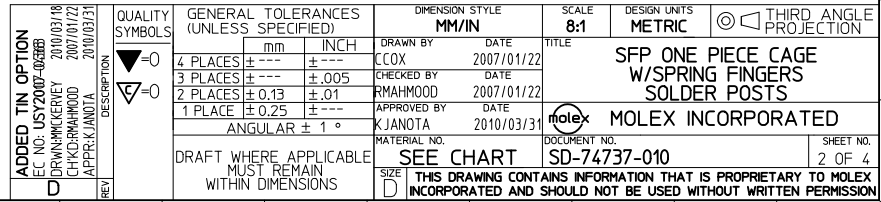
SPRING FINGER GASKET WITH TWO POINTS OF CONTACT. COMPLIES WITH (SFP) MSA BOARD AND BEZEL LOCATIONS.

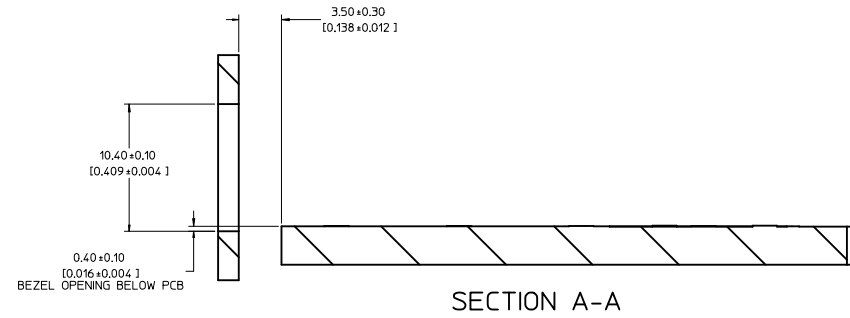
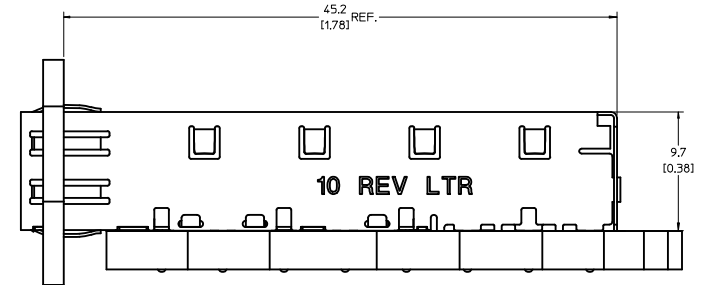
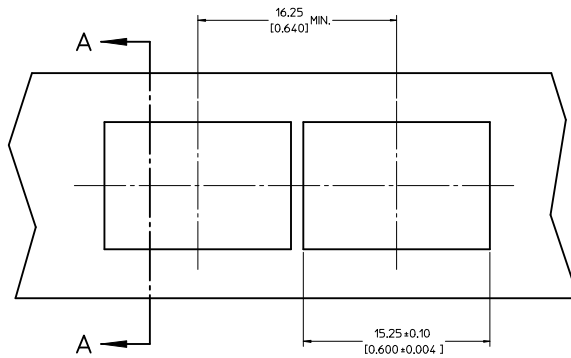


ADDED TIN OPTION EC NO: USY2007-00385 DRAWN BY: CHYKORAHMOOD CHECKED BY: KJANOTA APPROVED BY: KJANOTA DATE: 2010/03/31	QUALITY SYMBOLS ▽=0 ▽=0	GENERAL TOLERANCES (UNLESS SPECIFIED)		DIMENSION STYLE MM/IN		SCALE 5:1	DESIGN UNITS METRIC	 THIRD ANGLE PROJECTION
				DRAWN BY C COX	DATE 2007/01/22	TITLE SFP ONE PIECE CAGE W/SPRING FINGERS SOLDER POSTS		
				CHECKED BY RMAHMOOD	DATE 2007/01/22	MOLEX INCORPORATED		
				APPROVED BY KJANOTA	DATE 2010/03/31	DOCUMENT NO. SD-74737-010		
				MATERIAL NO. SEE CHART		SIZE D		
DRAFT WHERE APPLICABLE MUST REMAIN WITHIN DIMENSIONS		mm		INCH				
		4 PLACES ± --- ± ---						
		3 PLACES ± --- ± .005						
		2 PLACES ± 0.13 ± ---						
		1 PLACE ± 0.25 ± ---						
		ANGULAR ± °						

19 18 17 16 15 14 13 12 11 10 9 8 7 6 5 4 3 2 1

- [illegible]





SECTION A-A

ADDED TIN OPTION IEC NO: USY2007-0338B DRAWN BY: CHYKORRAHMOOD 2010/03/18 CHECKED BY: KJANOTA 2010/03/31 APPR: KJANOTA 2010/03/31	QUALITY SYMBOLS ▽=0 ▽=0	GENERAL TOLERANCES (UNLESS SPECIFIED)		DIMENSION STYLE MM/IN	SCALE 5:1	DESIGN UNITS METRIC	THIRD ANGLE PROJECTION
		4 PLACES ± ---	± ---	mm	DATE	TITLE SFP ONE PIECE CAGE W/SPRING FINGERS SOLDER POSTS	
		3 PLACES ± ---	± .005	INCH	DATE		
		2 PLACES ± 0.13	± .01		DATE	MOLEX INCORPORATED	
DRAFT WHERE APPLICABLE MUST REMAIN WITHIN DIMENSIONS	SIZE D	1 PLACE ± 0.25	± ---		DATE	SD-74737-010	
		ANGULAR ± 1 °			DATE		
					DATE	SHEET NO. 3 OF 4	

20 19 18 17 16 15 14 13 12 11 10 9 8 7 6 5 4 3 2 1

M

L

K

J

I

H

G

F

E

D

C

B

A

M

L

K

J

I

H

G

F

E

D

C

B

A

DATE	REV	CHANGES
2007/01/17	A	INITIAL RELEASE
2007/01/24	B	[1] ON SHT1 ADDED TEXT TO ISO VIEW & SIDE VIEW, [2] ON SHT3 DELETED BEZ FRONT VIEW
2007/04/25	C	[1] ADDED REV SHEET, [2] UPDATED REV SHEET NOTES A-B, [3] UPDATED DRAWING TO REFLECT CHG'S MADE TO EM-74737-010-ASSY REV C, [4] ON SHT1 ROTATED BTM VIEW 180 DEGREES.
2010/03/18	D	[1] ADDED PLATING CHART ON SHT1 WITH TIN AND NICKEL OPTION, [2] REMOVED PLATING CALLOUT FROM NOTE 3, [3] CHANGED MATERIAL NO. TO 'SEE CHART'

19 18 17 16 15 14 13 12 11 10 9 8 7 6 5 4 3 2 1

ADDED TIN OPTION EC NO: USY2007-0038B DRAWN:MMCKEVEY 2010/03/18 CHKD:RMAHMOOD 2007/01/22 APPR:K.JANOTA 2010/03/31 D	QUALITY SYMBOLS =0 =0	GENERAL TOLERANCES (UNLESS SPECIFIED)		DIMENSION STYLE MM/IN		SCALE 1:1	DESIGN UNITS METRIC	THIRD ANGLE PROJECTION	
				DRAWN BY CCOX		DATE 2007/01/22	TITLE SFP ONE PIECE CAGE W/SPRING FINGERS SOLDER POSTS		
		4 PLACES ± --- ± --- 3 PLACES ± --- ± .005 2 PLACES ± 0.13 ± .01 1 PLACE ± 0.25 ± --- ANGULAR ± 1 °		CHECKED BY RMAHMOOD		DATE 2007/01/22			
		DRAFT WHERE APPLICABLE MUST REMAIN WITHIN DIMENSIONS		APPROVED BY K.JANOTA		DATE 2010/03/31	MOLEX INCORPORATED		
				MATERIAL NO. SEE CHART		DOCUMENT NO. SD-74737-010		SHEET NO. 4 OF 4	
				SIZE D		THIS DRAWING CONTAINS INFORMATION THAT IS PROPRIETARY TO MOLEX INCORPORATED AND SHOULD NOT BE USED WITHOUT WRITTEN PERMISSION			