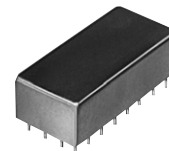


Plug-In Power Splitter/Combiner

10 Way-0° 50Ω

1 to 150 MHz

PSC-10-1+
PSC-10-1



CASE STYLE: E10
PRICE: \$90.45 ea. QTY (1-9)

Maximum Ratings

Operating Temperature	-55°C to 100°C
Storage Temperature	-55°C to 100°C
Power Input (as a splitter)	1W max.
Internal Dissipation	0.87W max.

Pin Connections

SUM PORT	29
PORT 1	7
PORT 2	16
PORT 3	31
PORT 4	24
PORT 5	9
PORT 6	2
PORT 7	26
PORT 8	17
PORT 9	4
PORT 10	5
NOTUSED	15
GROUND	all other pins
CASE GROUND	all other pins

Features

- low insertion loss, 0.4 dB typ.
- good isolation, 27 dB typ.
- excellent amplitude unbalance, 0.3 dB typ.
- rugged, welded case

Applications

- HF/VHF
- amateur radio
- FM broadcasting

+ RoHS compliant in accordance with EU Directive (2002/95/EC)

The + suffix identifies RoHS Compliance. See our web site for RoHS Compliance methodologies and qualifications.

Splitter Electrical Specifications

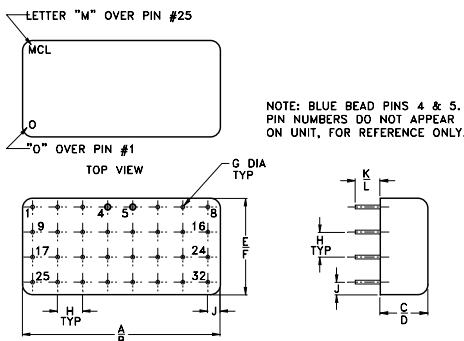
FREQ. RANGE (MHz)	ISOLATION (dB)			INSERTION LOSS (dB) ABOVE 10 dB			PHASE UNBALANCE (Degrees)			AMPLITUDE UNBALANCE (dB)								
	L	M	U	L	M	U	L	M	U	L	M	U						
f _L -f _U	Typ. Min.	Typ. Min.	Typ. Min.	Typ. Max.	Typ. Max.	Typ. Max.	Max.	Max.	Max.	Max.	Max.	Max.						
1-150	36	23	27	23	23	18	0.3	0.6	0.4	0.8	1.0	1.3	3	6	10	0.2	0.3	0.4

L = low range [f_L to 10 f_L] M = mid range [10 f_L to f_U/2] U = upper range [f_U/2 to f_U]

Typical Performance Data

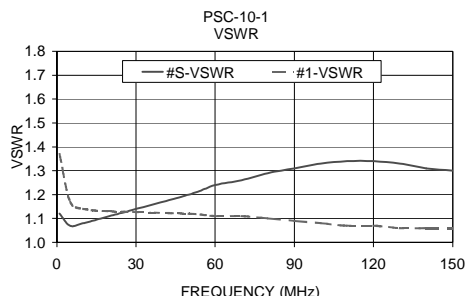
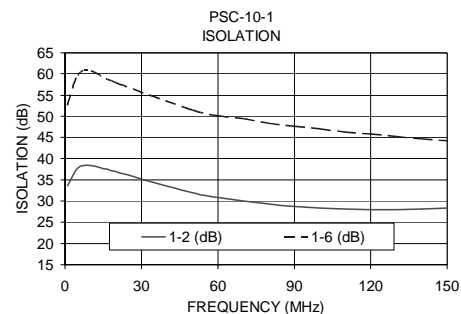
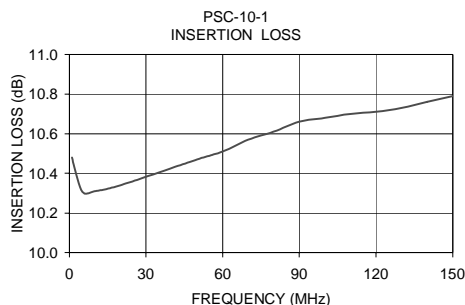
Frequency (MHz)	Insertion Loss (dB)	Amplitude Unbalance (dB)	Isolation (dB)		Phase Unbalance (deg.)	VSWR S	VSWR 1
			1-2	1-6			
1.00	10.48	0.04	33.61	52.48	0.24	1.12	1.37
5.00	10.31	0.04	37.77	59.69	0.40	1.07	1.17
10.00	10.31	0.03	38.38	60.63	0.67	1.08	1.14
20.00	10.34	0.03	36.88	57.86	1.29	1.11	1.13
50.00	10.47	0.06	31.99	51.48	3.16	1.20	1.12
60.00	10.51	0.08	30.90	50.14	3.76	1.24	1.11
70.00	10.57	0.08	29.99	49.39	4.32	1.26	1.11
80.00	10.61	0.09	29.29	48.27	4.93	1.29	1.10
90.00	10.66	0.10	28.72	47.59	5.42	1.31	1.09
100.00	10.68	0.13	28.31	46.91	6.06	1.33	1.08
110.00	10.70	0.13	28.05	46.24	6.58	1.34	1.07
120.00	10.71	0.14	27.91	45.72	7.11	1.34	1.07
130.00	10.73	0.16	27.91	45.17	7.57	1.33	1.06
140.00	10.76	0.17	28.06	44.65	8.11	1.31	1.06
150.00	10.79	0.20	28.36	44.21	8.72	1.30	1.06

Outline Drawing



Outline Dimensions (inch/mm)

A	B	C	D	E	F	G
1.580	1.620	.380	.410	.770	.810	.030
40.13	41.15	9.65	10.41	19.56	20.57	0.76
H	J	K	L			wt
.200	.10	.20	.14			grams
5.08	2.54	5.08	3.56			23.0



electrical schematic

