



CLT-115-02-F-D-A-K-BE

CLT-105-02-F-D

CLT-125-02-L-D

(2.00 mm) .0787"

CLT SERIES

LOW PROFILE DUAL WIPE SOCKET

SPECIFICATIONS

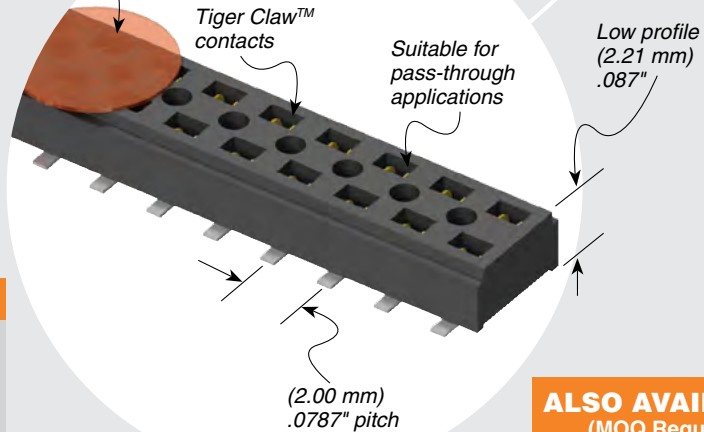
For complete specifications and recommended PCB layouts see www.samtec.com?CLT

Insulator Material: Black Liquid Crystal Polymer
Contact Material: Phosphor Bronze
Plating: Sn or Au over 50 μ" (1.27 μm) Ni
Current Rating (TMMH/CLT): 4.1 A per pin (1 pin powered per row)
Operating Temp Range: -55 °C to +125 °C
Contact Resistance: 10 mΩ
Insertion Depth: Top Entry= (1.40 mm) .055" minimum Bottom Entry= (2.57 mm) .101" minimum (add board thickness for correct post OAL)
Max Cycles: 100 with 10 μ" (0.25 μm) Au
RoHS Compliant: Yes

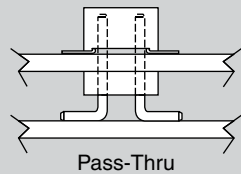
Mates with: TMM, TMMH, MTMM, MMT, TW, TSH



Available with optional Pick & Place Pads



APPLICATION



ALSO AVAILABLE (MOQ Required)

- Other platings
- Contact Samtec.

PROCESSING

Lead-Free Solderable: Yes
SMT Lead Coplanarity: (0.10 mm) .004" max (02-25) (0.15 mm) .006" max (26-34) (0.20 mm) .008" max (35-50)

RECOGNITIONS

For complete scope of recognitions see www.samtec.com/quality



FILE NO. E111594

CLT	1	NO. PINS PER ROW	LEAD STYLE	PLATING OPTION	D	OTHER OPTIONS
		02 thru 50	<p>-01 = Through-hole</p> <p>-02 = Surface Mount</p> <p>-03 = Through-hole</p>	<p>-F = Gold flash on contact, Matte Tin on tail</p> <p>-L = 10 μ" (0.25 μm) Gold on contact, Matte Tin on tail</p> <p>-G = 10 μ" (0.25 μm) Gold on contact, Gold flash on tail</p>		<p>All options require Style -02</p> <p>-BE = Bottom Entry (Required for bottom entry applications)</p> <p>-A = Alignment Pin (3 positions minimum) Metal or plastic at Samtec's discretion</p> <p>-K = (5.00 mm) .197" DIA Polyimide Film Pick & Place Pad (04 thru 50 only)</p> <p>-P = Pick & Place Pad (4 positions minimum) (Not always necessary for auto placement.)</p> <p>-TR = Tape & Reel Packaging (36 positions max)</p>

LEAD STYLE	A
-01	(2.16) .085
-03	(2.95) .116

Note: Some lengths, styles and options are non-standard, non-returnable.