

Customer Information Sheet

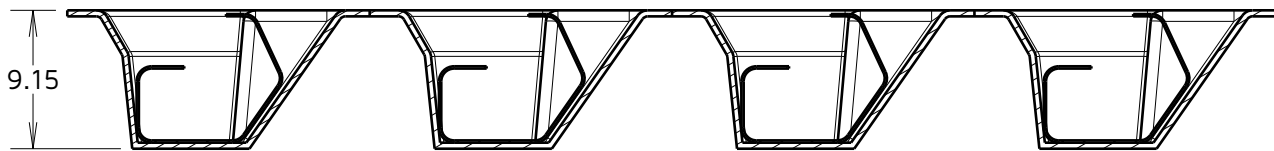
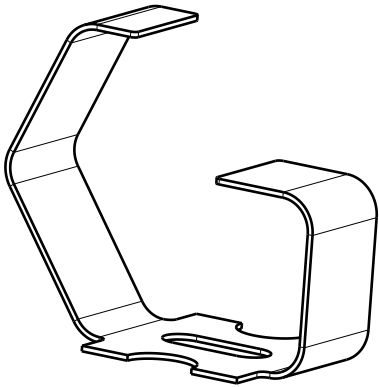
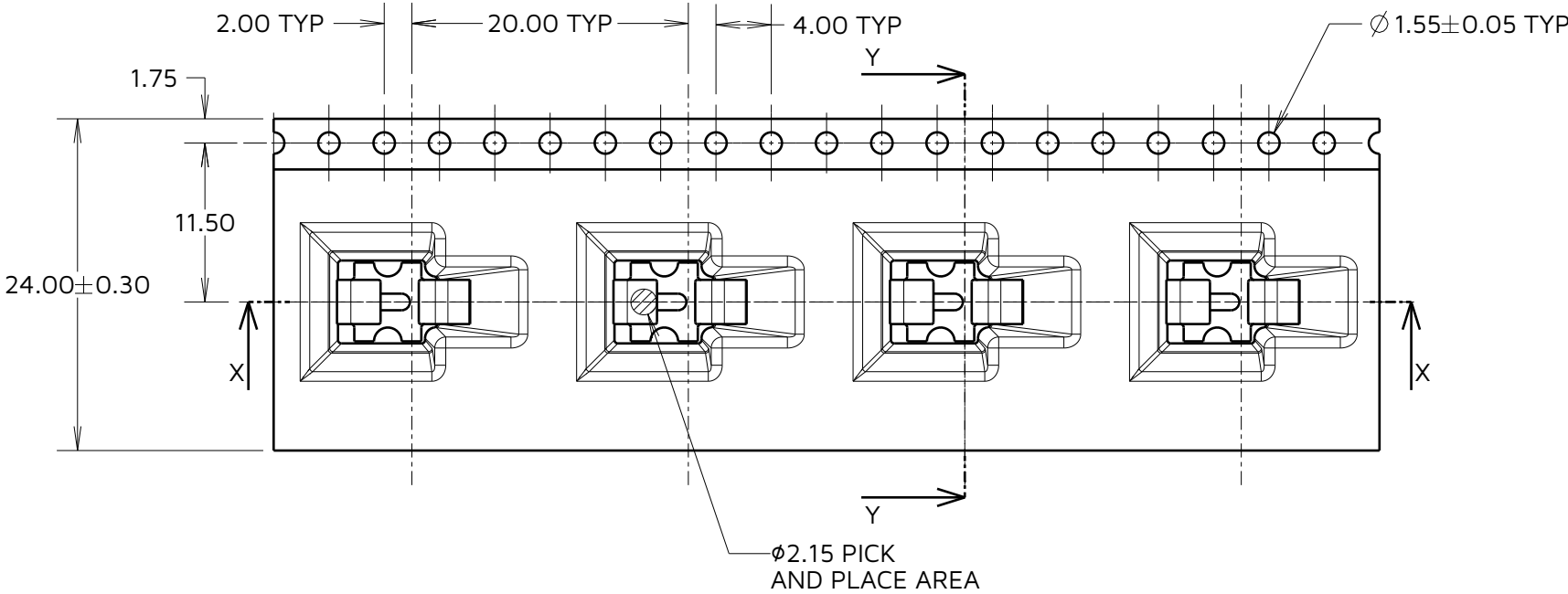
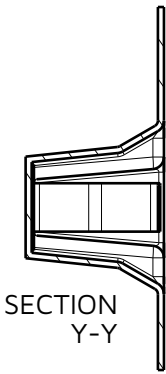
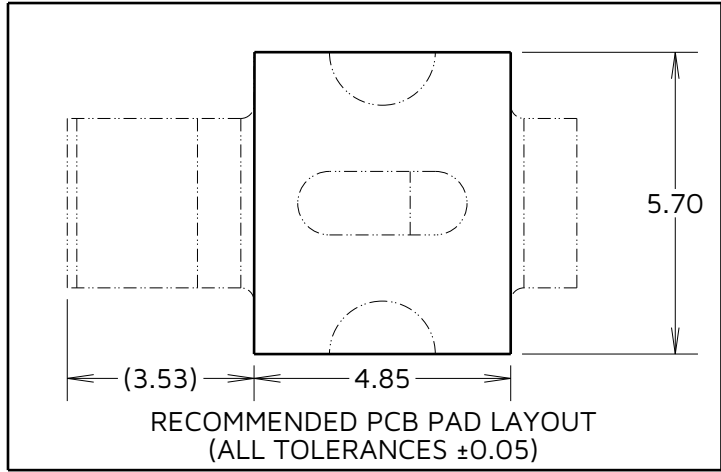
IF IN DOUBT - ASK

©

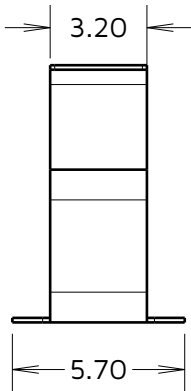
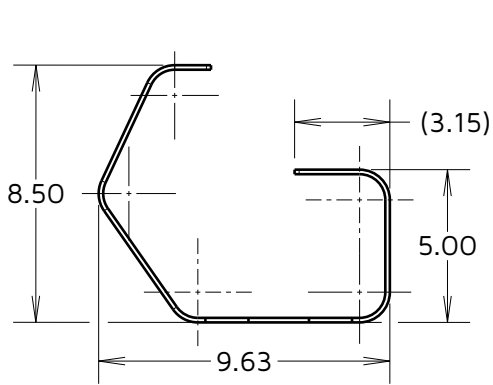
NOT TO SCALE

THIRD ANGLE PROJECTION

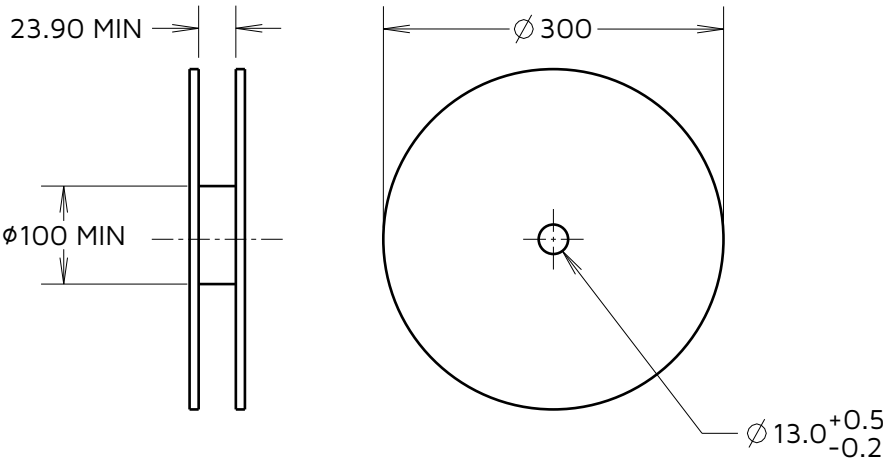
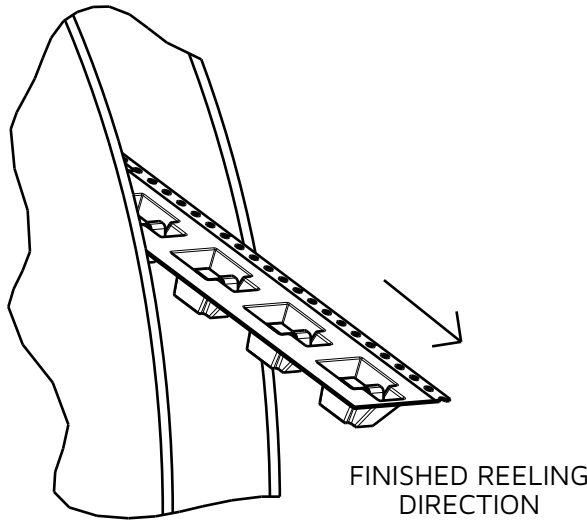
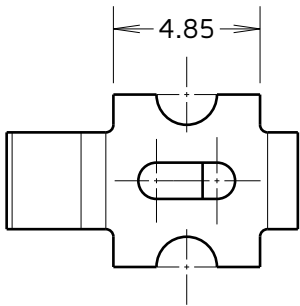
ALL DIMENSIONS IN mm



SECTION X-X



COMPONENT DETAILS



REEL DETAILS

- NOTES:
1. QUANTITY OF COMPONENTS PER REEL = 350.
 2. THIS PRODUCT IS TAPED AND REELED IN ACCORDANCE WITH EIA-481 (ELECTRONICS INDUSTRIES ASSOCIATION).
 3. SEE COMPONENT SPEC C055XX FOR FULL SPECIFICATION (LATEST ISSUE).
 4. SEE SHEET 3 FOR RECOMMENDED DEFLECTION DIMENSIONS.

MJ	3	23.10.24	35012
NAME	ISS.	DATE	CN/CO
APPROVED:		M. JELLEY	
CHECKED:		R. PORTLOCK	
DRAWN:		R.PORTLOCK	

HARWIN
www.harwin.com

TOLERANCES
X. = ±1mm
X.X = ±0.50mm
X.XX = ±0.20mm
X.XXX = ±0.01mm
ANGLES = ±5°
UNLESS STATED

THIS DRAWING AND ANY INFORMATION OR DESCRIPTIVE MATTER SET OUT HEREON ARE CONFIDENTIAL AND COPYRIGHT PROPERTY OF THE HARWIN GROUP AND MUST NOT BE DISCLOSED, LOANED, COPIED OR USED FOR MANUFACTURING, TENDERING OR FOR ANY OTHER PURPOSE WITHOUT THEIR WRITTEN PERMISSION.

MATERIAL & FINISH:

SEE SHEET 3

TITLE:
MULTI-DIRECTIONAL SPRING CONTACT IN TAPE AND REEL
DRAWING NUMBER:
S1981-46R
SHT 2 OF 3

Customer Information Sheet

IF IN DOUBT - ASK

©

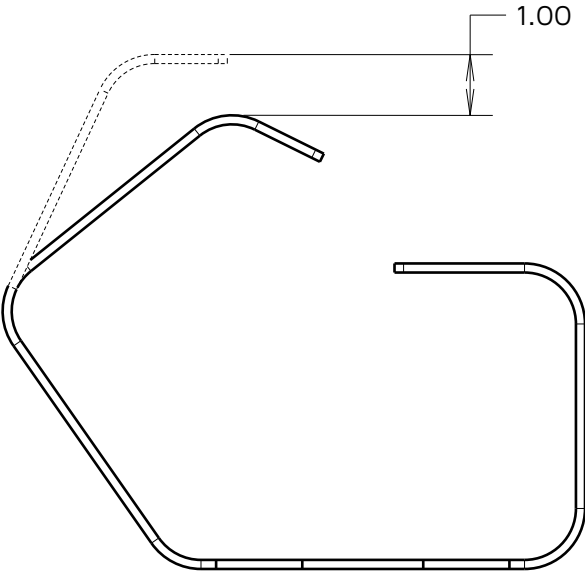
NOT TO SCALE

THIRD ANGLE PROJECTION

ALL DIMENSIONS IN mm

COMPONENT SPECIFICATION:
MATERIAL = CUPRO NICKEL
THICKNESS = 0.15mm
FINISH = 100% TIN OVER NICKEL
(SEE C055XX FOR FULL COMPONENT SPECIFICATION)

S1981-46R
DEFLECTION FROM ABOVE

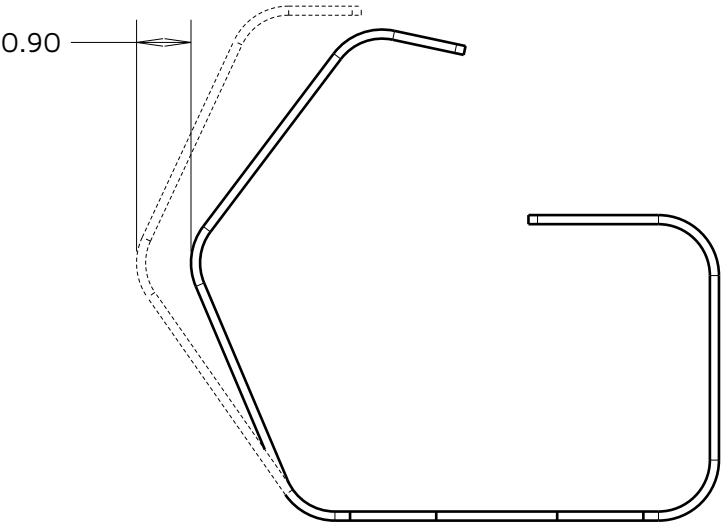


MAXIMUM RECOMMENDED VERTICAL
DEFLECTION = 1.00mm

MINIMUM RECOMMENDED VERTICAL
DEFLECTION = 0.40mm

MINIMUM FORCE OF 2.0N

S1981-46R
DEFLECTION FROM FRONT



MAXIMUM RECOMMENDED HORIZONTAL
DEFLECTION = 0.90mm

MINIMUM RECOMMENDED HORIZONTAL
DEFLECTION = 0.30mm

MINIMUM FORCE OF 0.7N

MJ	3	23.10.24	35012
NAME	ISS.	DATE	CN/CO
APPROVED:		M. JELLEY	
CHECKED:		R. PORTLOCK	
DRAWN:		R.PORTLOCK	

HARWIN

www.harwin.com

TOLERANCES

X. = $\pm 1\text{mm}$
X.X = $\pm 0.50\text{mm}$
X.XX = $\pm 0.20\text{mm}$
X.XXX = $\pm 0.01\text{mm}$

ANGLES = $\pm 5^\circ$

UNLESS STATED

THIS DRAWING AND ANY
INFORMATION OR DESCRIPTIVE
MATTER SET OUT HEREON ARE
CONFIDENTIAL AND COPYRIGHT
PROPERTY OF THE HARWIN GROUP
AND MUST NOT BE DISCLOSED,
LOANED, COPIED OR USED FOR
MANUFACTURING, TENDERING OR FOR
ANY OTHER PURPOSE WITHOUT THEIR
WRITTEN PERMISSION.

MATERIAL & FINISH:

SEE ABOVE

TITLE:
MULTI-DIRECTIONAL SPRING
CONTACT IN TAPE AND REEL

DRAWING NUMBER:
S1981-46R

SHT
3
OF
3