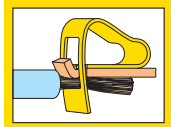
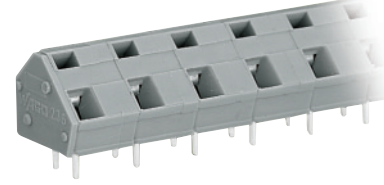
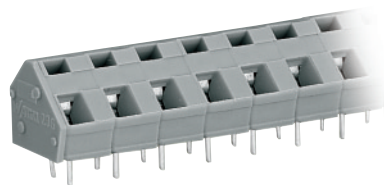
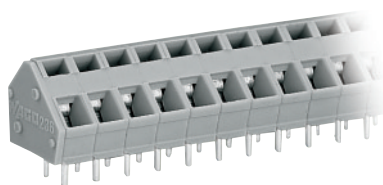


# Terminal Strips 2.5 mm<sup>2</sup>/AWG 12, Series 236, Pin Spacings 5/5.08 mm/0.2 in, 7.5/7.62 mm/0.3 in, 10/10.16 mm/0.4 in



<b>Pin spacing 5/5.08 mm / 0.2 in</b> 0.08 – 2.5 mm <sup>2</sup>   AWG 28 – 12 250 V/4 kV/3, 16 A   300 V, 15 A 500 V/4 kV/2, 16 A   300 V, 15 A 5 – 6 mm / 0.22 in *  GL BV NV	<b>Pin spacing 7.5/7.62 mm / 0.3 in</b> 0.08 – 2.5 mm <sup>2</sup>   AWG 28 – 12 400 V/6 kV/3, 16 A   300 V, 15 A 800 V/6 kV/2, 16 A   300 V, 15 A 5 – 6 mm / 0.22 in *  GL BV NV	<b>Pin spacing 10/10.16 mm / 0.4 in</b> 0.08 – 2.5 mm <sup>2</sup>   AWG 28 – 12 500 V/6 kV/3, 16 A   300 V, 15 A 1000 V/6 kV/2, 16 A   300 V, 15 A 5 – 6 mm / 0.22 in *  GL BV NV
--	--	---



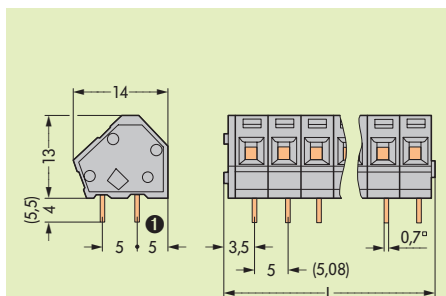
No. of poles	Item No.	Pack.-unit pcs	No. of poles	Item No.	Pack.-unit pcs	No. of poles	Item No.	Pack.-unit pcs
<b>Terminal strips, grey, standard lengths, 1 solder pin/pole, rear ①</b>			<b>Terminal strips, grey, standard lengths, 1 solder pin/pole, rear ①</b>			<b>Terminal strips, grey, standard lengths, 1 solder pin/pole, rear ①</b>		
2	<b>236-102</b>	420 (4 x 105)	2	<b>236-202</b>	280 (4 x 70)	2	<b>236-302</b>	200 (4 x 50)
3	<b>236-103</b>	280 (4 x 70)	3	<b>236-203</b>	200 (4 x 50)	3	<b>236-303</b>	140 (4 x 35)
4	<b>236-104</b>	220 (4 x 55)	4	<b>236-204</b>	140 (4 x 35)	4	<b>236-304</b>	100 (4 x 25)
6	<b>236-106</b>	140 (4 x 35)	6	<b>236-206</b>	100 (4 x 25)	6	<b>236-306</b>	80 (4 x 20)
8	<b>236-108</b>	100 (4 x 25)	8	<b>236-208</b>	80 (4 x 20)	8	<b>236-308</b>	60 (4 x 15)
12	<b>236-112</b>	80 (4 x 20)	12	<b>236-212</b>	40 (4 x 10)	12	<b>236-312</b>	40 (4 x 10)
16	<b>236-116</b>	60 (4 x 15)	16	<b>236-216</b>	40 (4 x 10)	16	<b>236-316</b>	20 (4 x 5)
24	<b>236-124</b>	40 (4 x 10)	24	<b>236-224</b>	20 (4 x 5)	24	<b>236-324</b>	20 (4 x 5)
36	<b>236-136</b>	20 (4 x 5)						
48	<b>236-148</b>	20 (4 x 5)						
<b>2 solder pins/pole</b>			<b>2 solder pins/pole</b>			<b>2 solder pins/pole</b>		
2	<b>236-402</b>	420 (4 x 105)	2	<b>236-502</b>	280 (4 x 70)	2	<b>236-602</b>	200 (4 x 50)
3	<b>236-403</b>	280 (4 x 70)	3	<b>236-503</b>	200 (4 x 50)	3	<b>236-603</b>	140 (4 x 35)
4	<b>236-404</b>	220 (4 x 55)	4	<b>236-504</b>	140 (4 x 35)	4	<b>236-604</b>	100 (4 x 25)
6	<b>236-406</b>	140 (4 x 35)	6	<b>236-506</b>	100 (4 x 25)	6	<b>236-606</b>	80 (4 x 20)
8	<b>236-408</b>	100 (4 x 25)	8	<b>236-508</b>	80 (4 x 20)	8	<b>236-608</b>	60 (4 x 15)
12	<b>236-412</b>	80 (4 x 20)	12	<b>236-512</b>	40 (4 x 10)	12	<b>236-612</b>	40 (4 x 10)
16	<b>236-416</b>	60 (4 x 15)	16	<b>236-516</b>	40 (4 x 10)	16	<b>236-616</b>	20 (4 x 5)
24	<b>236-424</b>	40 (4 x 10)	24	<b>236-524</b>	20 (4 x 5)	24	<b>236-624</b>	20 (4 x 5)
36	<b>236-436</b>	20 (4 x 5)						
48	<b>236-448</b>	20 (4 x 5)						

For assemblies in other lengths and colors, please contact factory.

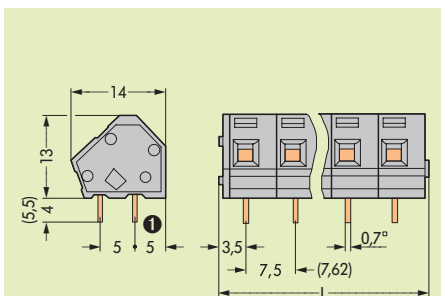


Additional item Nos. for colored terminal strips	Additional item No. for 2 solder pins/pole and with solder pins 3.6 mm / 0.142 in
black .../...-004 ●	.../334-000
blue .../...-006 ②	with solder pins 5.5 mm / 0.217 in
dark grey .../...-008 ●	.../332-000
light grey .../...-009 ○	② suitable for Ex i applications (only suitable for pin spacings 7.5/7.62 mm/0.3 in and 10/10.16 mm/0.4 in)
orange .../...-012 ●	Ex e II see pages 1.22 – 1.23
light green .../...-017 ●	
green .../...-023 ●	

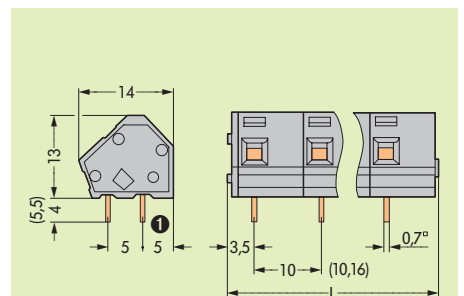
## Dimensions (in mm) (Adjustment of pin spacing is made by pulling on the end blocks so that they expand to satisfy the hole center required.)



Diameter of drilled hole: 1.1<sup>+0.1</sup> mm  
L = (No. of poles x pin spacing) + 2.3 mm



Diameter of drilled hole: 1.1<sup>+0.1</sup> mm  
L = (No. of poles x pin spacing) + 2.3 mm



Diameter of drilled hole: 1.1<sup>+0.1</sup> mm  
L = (No. of poles x pin spacing) + 2.3 mm