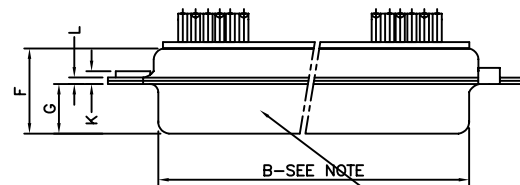
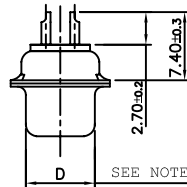


LAY OUT OF 50P CONNECTOR



Part No.& Date code printing



TECHNICAL SPECIFICATIONS

SHELLS	:	TIN/CADMIUM/ZINC PLATED STEEL
INSULATOR MATERIAL	:	SELF EXTINGUISHING THERMOPLASTIC TO UL CLASS 94 V0
	:	THE HOUSING WILL WITHSTAND EXPOSURE TO 260-265°C
	:	IF WE USE PROTECTIVE ADHESIVE (type Kapton or Teflon)
	:	OR PROTECTIVE METALLIC DEVICE
CONTACTS DIA ON ACTIVE AREA	:	01 MM.
CONTACTS MATERIAL	:	COPPER ALLOY
CONTACT PLATING	:	GOLD OVER NICKEL (ACTIVE ZONE)
	:	TINLEAD OVER NICKEL (TERMINATION ZONE)
FOR LEAD FREE PLATING	:	2 µMIN.MATTE TIN TOP OVER
	:	1.27µMIN.NICKEL UNDER PLATE(ON TERMINATION ZONE)
OPERATING TEMPERATURE	:	-55°C +125°C
OPERATING CURRENT	:	5 A PER CONTACT
CONTACT RESISTANCE	:	≤10m Ω
INSULATION RESISTANCE	:	≥5000M Ω
MAXIMUM VOLTAGE	:	1000 V _{r.m.s}
MECHANICAL ENDURANCE	:	200 MATINGS (Au FLASH) 500 MATINGS (0.76µ Au).
DAMP HEAT	:	21 DAYS.
WIRE SIZE	:	0.8 MM ² (AWG 20) MAX.

VIEW OF MATING FACE

"This LF product meets European Union Directives and other country regulations as described in GS-22-008"

Packaging as per GS-14-920

Housing will withstand exposure to 260°C peak temp for 3.5sec

ORDERING INFORMATION

SERIES	D B V 25 P 0 64 C T X B XXX LF	LEAD FREE
SHELL SIZE	E,A,B,C,D	SPECIAL CODES
OPTIONS	BLANK-STANDARD F-FLOAT MOUNTING V-FEM. SCREW LOCK HEX. (UNC) N-THREADED FEM. SCREW LOCK M3 L-CLINCH NUT (M3) W-RIVETED FEM. SCREW LOCK ROUND UNC O-CLINCH NUT (UNC) NO.OF CONTACTS 09,15,25,37,50 CONTACTS P - PIN S - SOCKET TERMINATION TYPE 0 - SOLDER BUCKET	INSULATOR COLOUR BLANK- NATURAL DIMPLES X-ON MALE CONNECTORS ONLY SHELL PLATING BLANK-ZINC T-STD. TIN over Cu or Zinc Cr 3 OPTIONS BLANK-STANDARD CONTACT PLATING 64 - Au FLASH 65 - 0.75 µAu

50	P	66.65	52.68	61.11	11.08	14.99	11.09	5.85	55.07	13.31	1.50	1.0
	S	66.65	52.30	61.11	10.62	14.99	11.21	6.05	55.07	13.31	1.10	0.8
37	P	68.94	55.30	63.50	8.23	12.17	11.09	5.85	57.45	10.46	1.50	1.0
	S	68.94	54.71	63.50	7.77	12.17	11.21	6.05	57.45	10.46	1.10	0.8
25	P	52.65	38.84	47.04	8.23	12.17	11.07	5.85	41.02	10.46	1.10	0.8
	S	52.65	38.25	47.04	7.77	12.17	11.21	6.05	41.02	10.46	1.10	0.8
15	P	38.76	25.12	33.32	8.23	12.17	10.99	5.85	27.25	10.46	1.10	0.8
	S	38.76	24.54	33.32	7.77	12.17	11.21	6.05	27.25	10.46	1.10	0.8
09	P	30.43	16.79	24.99	8.23	12.17	10.99	5.85	19.02	10.46	1.10	0.8
	S	30.43	16.21	24.99	7.77	12.17	11.21	6.05	19.02	10.46	1.10	0.8
SHELL SIZE	A	+0,76 0	+0,25 0	±0,12 C	+0,25 D 0	+0,76 E 0	F MAX	+0,15 G 0	+0,51 H 0	+0,51 J 0	±0,2 K	+0,22 L 0
DIMENSIONS												

NOTE:- 1) INSIDE DIMENSIONS OF THE MALE AND OUTSIDE DIMENSIONS OF THE FEMALE CONNECTOR
2) ALL ACCESSORIES SHOWN IN ASSEMBLY OPTIONS SHOULD BE ORDERED SEPARATELY

ASSEMBLY OPTIONS

FEMALE SCREW LOCK EXTENDED TYPE UNC 4-40,2B THREAD ORD CODE 8630-01-061	FEMALE SCREW LOCK EXTERNAL THREAD INTERNAL THREAD 8630-01 M3 M3 8630-01A M3 4-40 UNC 2 8630-01B 4-40 UNC 2A 4-40 UNC 2B ORD-CODE EXTERNAL THREAD INTERNAL THREAD
MALE LEVER LOCK ORD CODE 8630-3427(EABC) ORD CODE 8630-3428(D)	CONNECTOR WITH SPECIAL RIVETTED FEMALE SCREW LOCK PREFIX: W UNC 4-40,2B THREAD ORD CODE 8630-3425(EABC) ORD CODE 8630-3426(D)
	FEMALE LEVER LOCK ORD CODE 8630-3425(EABC) ORD CODE 8630-3426(D)

mat'l. code	SEE NOTE 4	surface	tolerance	projection	product family
ISO 1302	ISO 406 ISO 1101	tolerances unless otherwise specified	0°±1°	MM	D-SUB
ltr	ecn no	dr	date	linear	title
F	106-0074	GVJ	2006-06-08	0°±1°	D- SUB SOLDER BUCKET CONNECTOR
G	107-0088	RKV	2007-07-14	0°±1°	(WITH ASSEMBLY OPTIONS)
H	107-0175	MRA	2007-12-17	0°±1°	dwg no
J	108-0131	MRA	2008-10-06	0°±1°	sheet 1 of 1
		dr	GEORGE.V.JOSEPH	1999-03-20	size
		enrg	GEORGE.V.JOSEPH	1999-03-20	A3
		chr	ANISH SALAM	2007-07-14	
		appd	K.V.SIVADAS	2007-07-14	
sheet index	revision sheet	J	1		type Product Customer Drawing