

REV.	DESCRIPTION	DRAWN	CHECKED	APPROVED
A	NEW RELEASE	JLH 12/03/05		

NOTES:

- Contact resistance: 30mΩ max.
- Dielectric withstanding voltage: 250 VAC 1minute.
- Insulation resistance: 1000 MΩ min.
- Temperature range: -20°C ~ +70°C.
- Product number code:

DS1040-01 - X X X X X

Packing type
 B: tube A: polybag
 T: tray R: tape & reel

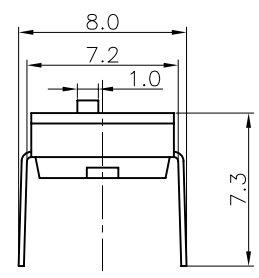
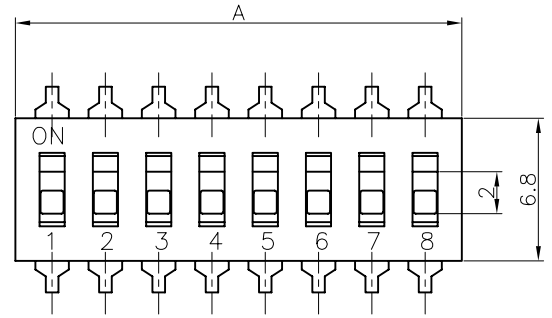
Acuator color
 W: White Y: yellow R: red
 B: Black

Housing color
 W: White Y: yellow R: red
 B: Black

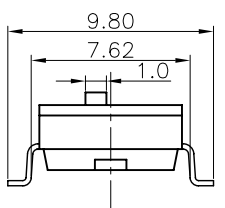
Mounting type
 S: SMT type
 V: V/T type

No. of contacts
 2 3 4 5 6 7 8 9 10

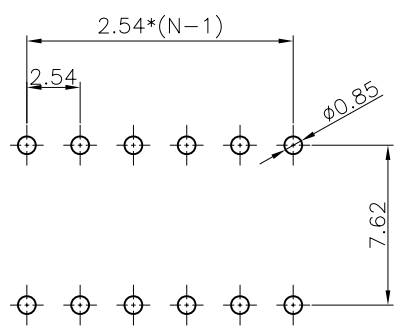
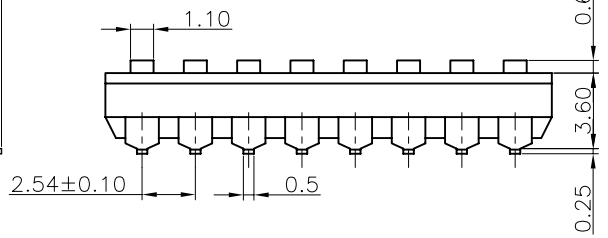
Positions	DIM.A
2	6.04
3	8.58
4	11.12
5	13.60
6	16.20
7	18.74
8	21.28
9	23.82
10	26.36



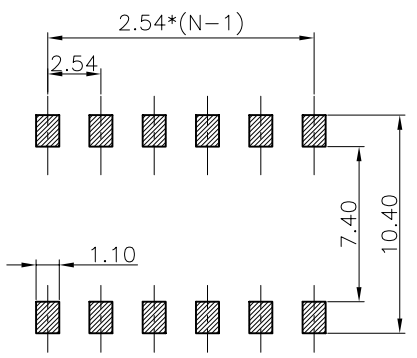
V/T TYPE



SMT TYPE



V/T TYPE



SMT TYPE

RECOMMEND P.C.B LAYOUT
 Tolerance±0.05
 N: Number of contacts/2

GENERAL TOLERANCE		ANGLE TOLERANCE	
X.	±0.60	X.	±5°
.X	±0.38	.X	±3°
.XX	±0.25	.XX	±2°
DRAWING TYPE		CUSTOMER	
SCALE		1:1	SHEET 1 OF 1
DRAWING NO.		C-DS1040-01-XXXXX	

PROJECTION	TITLE
UNITS	mm
SHEET SIZE	A4
SWD (1040-01)	
SERIES	DS1040-01
SWITCH PITCH 2.54mm SMT TYPE	