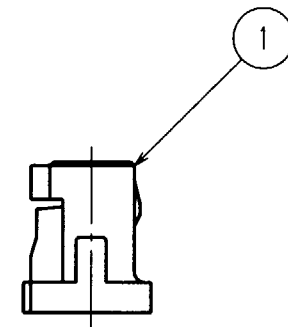
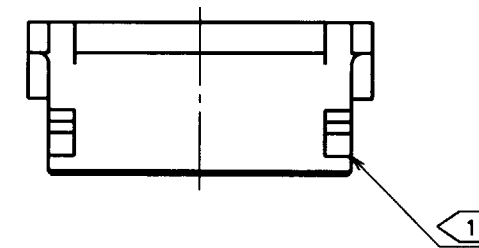
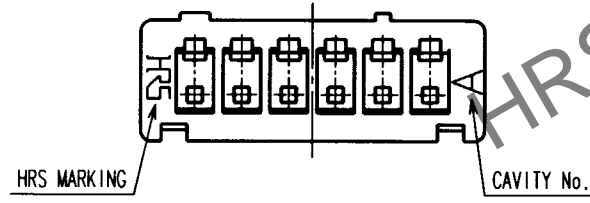
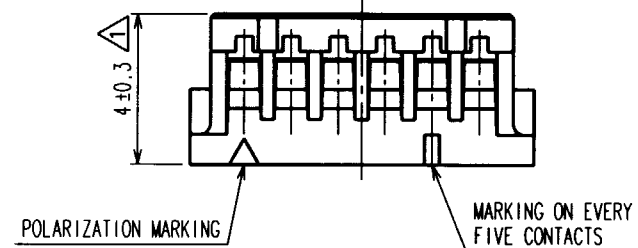
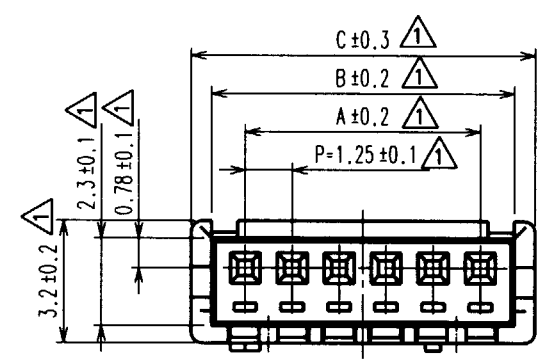


Oct.1.2025 Copyright 2025 HIROSE ELECTRIC CO., LTD. All Rights Reserved.
 In case of consideration for using Automotive equipment / device which demand high reliability, kindly contact our sales window correspondents.

| COUNT | DESCRIPTION OF REVISIONS | BY | CHKD | DATE | COUNT | DESCRIPTION OF REVISIONS | BY | CHKD | DATE |
|-------|--------------------------|-----|------|----------|-------|--------------------------|----|------|------|
| 10 | RE-H-03529 | T.Y | C.H | 00.05.30 | | | | | |
| | | | | | | | | | |
| | | | | | | | | | |



| CODE No. | NUMBER OF CONTACTS | A | B | C |
|--------------|--------------------|-------|-------|-------|
| CL536-0001-4 | 2 | 1.25 | 3.05 | 4.15 |
| CL536-0002-7 | 3 | 2.50 | 4.30 | 5.40 |
| CL536-0003-0 | 4 | 3.75 | 5.55 | 6.65 |
| CL536-0004-2 | 5 | 5.00 | 6.80 | 7.90 |
| CL536-0005-5 | 6 | 6.25 | 8.05 | 9.15 |
| CL536-0006-8 | 7 | 7.50 | 9.30 | 10.40 |
| CL536-0007-0 | 8 | 8.75 | 10.55 | 11.65 |
| CL536-0008-3 | 9 | 10.00 | 11.80 | 12.90 |
| CL536-0009-6 | 10 | 11.25 | 13.05 | 14.15 |
| CL536-0010-5 | 11 | 12.50 | 14.30 | 15.40 |
| CL536-0011-8 | 12 | 13.75 | 15.55 | 16.65 |
| CL536-0012-0 | 13 | 15.00 | 16.80 | 17.90 |
| CL536-0013-3 | 14 | 16.25 | 18.05 | 19.15 |
| CL536-0014-6 | 15 | 17.50 | 19.30 | 20.40 |

NOTE 1: WHEN THIS CONNECTOR HAS TWO OR THREE CONTACTS, THE LOCK SHALL BE SET AT THE CENTER OF HOUSING. IF MORE THAN FOUR, THE TWO LOCKS SHALL BE SET AS SHOWN ON THIS DRAWING.

TO

| | | | | | | | | | | | |
|----------------|--|------------------------------|--|-----------------|--|---------------|--|------------|--|----------------|--|
| NO. | | MATERIAL | | FINISH, REMARKS | | 1 | | POLYAMIDE | | BEIGE, UL94V-0 | |
| CODE NO. (OLD) | | DRAWN | | DESIGNED | | CHECKED | | APPROVED | | RELEASED | |
| | | T.Goi | | I.Tashiro | | K.Akiyama | | M.Yamamoto | | | |
| | | '94. 4.16 | | '94. 4.19 | | '94. 4.25 | | '94. 4.25 | | | |
| SCALE | | DRAWING NO. | | | | PART NO. | | | | | |
| 5 : 1 | | EDC3-083675 | | | | DF13-*S-1.25C | | | | | |
| UNITS | | HRS HIROSE ELECTRIC CO., LTD | | | | CODE NO. | | CL536- | | | |
| mm | | | | | | | | 1/1 | | | |