

REVISIONS				
SYM	ZONE	ECN, ERN NO.	DATE	APPRD.
H		P/N ADDED FOR LUBRICANT OPTION	2008/10/23	J.S.
J		UPDATED	APR26/07	J.S.
K		UPDATED MATERIAL FOR HOUSING	MAY29/07	J.S.

THIS IS A CAD DRAWING. DO NOT MANUALLY REVISE. MATERIAL NOTES:

PLASTIC HOUSING:  
HIGH TEMPERATURE LCP  
FLAMMABILITY RATING UL94V-0.

CONTACTS:  
PHOSPHOR BRONZE  
PLATING OPTION 1: (U75 ONLY)  
30µ" [0.76 µm] MIN. GOLD ON MATING AREA AND 150-300 µ" (3.81-7.62 µm) MIN. TIN/LEAD (90/10) PLATING ON TERMINATION OVER 50µ" [1.27 µm] MIN. NICKEL UNDER LAYER.  
PLATING OPTION 2: (RoHS FOR UE75 ONLY)  
30µ" [0.76 µm] MIN. GOLD ON MATING AREA AND 2 µ" (0.05 µm) GOLD FLASH PLATING ON TERMINATION OVER 50µ" [1.27 µm] MIN. NICKEL UNDER LAYER.  
PLATING OPTION 3: (RoHS FOR UE75 ONLY)  
30µ" [0.76 µm] MIN. GOLD ON MATING AREA AND 150-300 µ" (3.81-7.62 µm) MIN. LOW WHISKER MATTE TIN PLATING ON TERMINATION OVER 50µ" [1.27 µm] MIN. NICKEL UNDER LAYER.  
PLATING OPTION 4: (FOR U75 ONLY)  
15µ" [0.38 µm] MIN. GOLD ON MATING AREA AND 150-300 µ" (3.81-7.62 µm) MIN. TIN/LEAD (90/10) PLATING ON TERMINATION OVER 50µ" [1.27 µm] MIN. NICKEL UNDER LAYER.  
PLATING OPTION 5: (RoHS FOR UE75 ONLY)  
15µ" [0.38 µm] MIN. GOLD ON MATING AREA AND 2 µ" (0.05 µm) GOLD FLASH PLATING ON TERMINATION OVER 50µ" [1.27 µm] MIN. NICKEL UNDER LAYER.  
PLATING OPTION 6: (RoHS FOR UE75 ONLY)  
15µ" [0.38 µm] MIN. GOLD ON MATING AREA AND 150-300 µ" (3.81-7.62 µm) MIN. LOW WHISKER MATTE TIN PLATING ON TERMINATION OVER 50µ" [1.27 µm] MIN. NICKEL UNDER LAYER.  
LUBRICANT OPTION: LUBRICANT CAN BE ADDED ON THE CONTACTS MATING AREA (SEE P/N FOR THE OPTION)

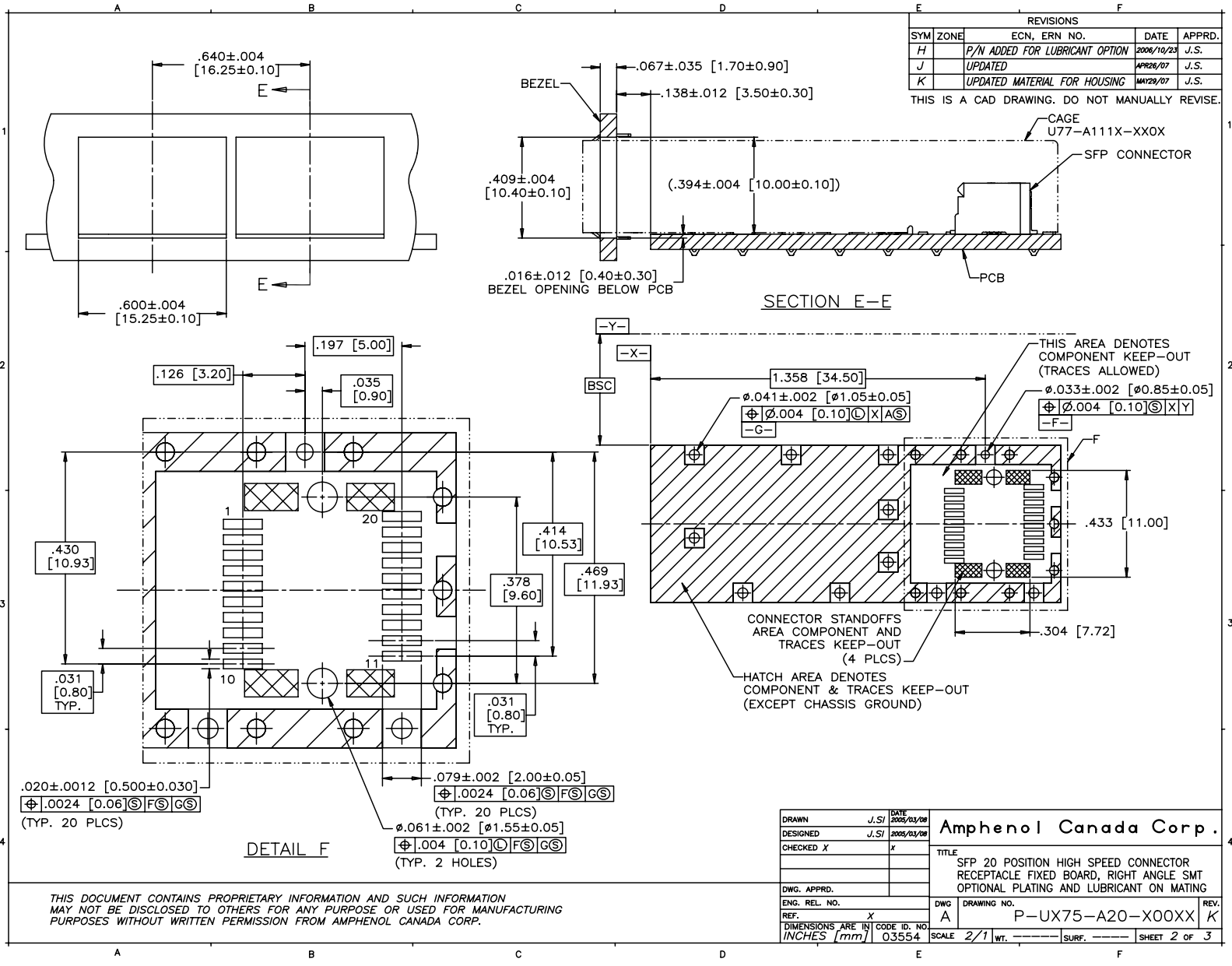
PACKAGING:  
TAPE AND REEL.  
TEMPERATURE RANGE:  
-40°C TO +85°C

AMPHENOL PART NUMBER CONFIGURATION  
UX75 - A 20 - X 0 0 X T  
SFP RECEPTACLE  
U75 = NON-RoHS  
UE75 = RoHS COMPLIANT  
CONTACT PLATING  
(FOR U75 NON-RoHS)  
1 = PLATING OPTION 1 (SEE MATERIAL NOTES)  
4 = PLATING OPTION 4 (SEE MATERIAL NOTES)  
(FOR UE75 RoHS)  
2 = PLATING OPTION 2 (SEE MATERIAL NOTES)  
3 = PLATING OPTION 3 (SEE MATERIAL NOTES)  
5 = PLATING OPTION 5 (SEE MATERIAL NOTES)  
6 = PLATING OPTION 6 (SEE MATERIAL NOTES)  
LUBRICANT OPTION ON MATING AREA  
0 = NO  
1 = YES

DRAWN J.S.I DATE 2008/03/08		Amphenol Canada Corp.	
DESIGNED J.S.I 2008/03/08		TITLE	
CHECKED X		SFP 20 POSITION HIGH SPEED CONNECTOR RECEPTACLE FIXED BOARD, RIGHT ANGLE SMT OPTIONAL PLATING AND LUBRICANT ON MATING	
I. E. APPRD.		DWG. DRAWING NO.	
Q. A. APPRD.		A P-UX75-A20-X00XX	
DWG. APPRD.		REV. K	
ENG. REL. NO.		SCALE 4/1	
REF. X		WT. -----	
DIMENSIONS ARE IN INCHES (mm) 03554		SURF. -----	
		SHEET 1 OF 3	

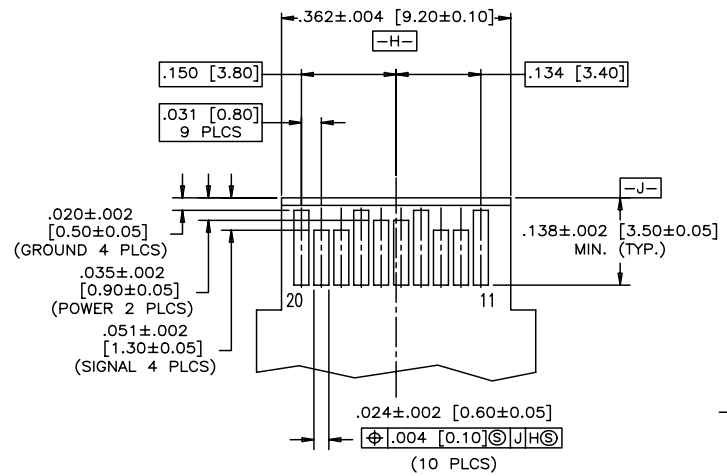


THIS DOCUMENT CONTAINS PROPRIETARY INFORMATION AND SUCH INFORMATION MAY NOT BE DISCLOSED TO OTHERS FOR ANY PURPOSE OR USED FOR MANUFACTURING PURPOSES WITHOUT WRITTEN PERMISSION FROM AMPHENOL CANADA CORP.

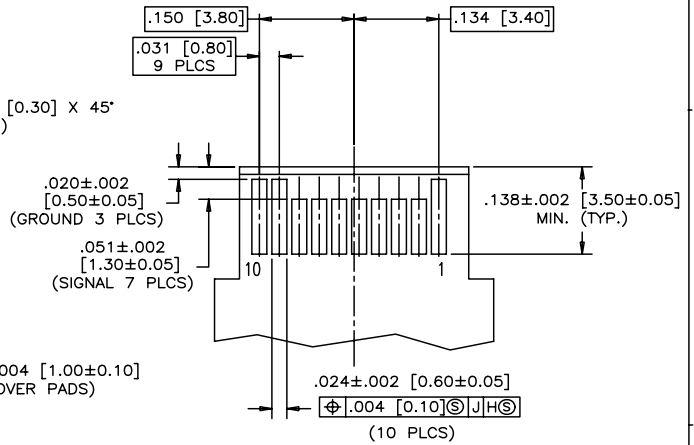
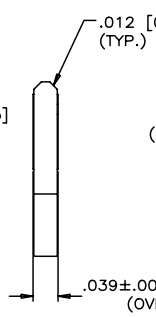


REVISIONS				
SYM	ZONE	ECN, ERN NO.	DATE	APPRD.
H		P/N ADDED FOR LUBRICANT OPTION	2006/10/23	J.S.
J		UPDATED	APR26/07	J.S.
K		UPDATED MATERIAL FOR HOUSING	MAY29/07	J.S.

THIS IS A CAD DRAWING. DO NOT MANUALLY REVISE.



TOP VIEW OF BOARD



BOTTOM VIEW OF BOARD

RECOMMENDED LAYOUT DETAIL  
MATING TRANSCEIVER PCB

THIS DOCUMENT CONTAINS PROPRIETARY INFORMATION AND SUCH INFORMATION MAY NOT BE DISCLOSED TO OTHERS FOR ANY PURPOSE OR USED FOR MANUFACTURING PURPOSES WITHOUT WRITTEN PERMISSION FROM AMPHENOL CANADA CORP.

DRAWN	J.S.	DATE	2005/03/09	<b>Amphenol Canada Corp.</b>			
DESIGNED	J.S.	DATE	2005/03/09				
CHECKED	X						
DWG. APPRD.				TITLE			
ENG. REL. NO.				SFP 20 POSITION HIGH SPEED CONNECTOR RECEPTACLE FIXED BOARD, RIGHT ANGLE SMT OPTIONAL PLATING AND LUBRICANT ON MATING			
REF.	X	DWG.	A	DRAWING NO.	P-UX75-A20-X00XX	REV.	K
DIMENSIONS ARE IN INCHES [mm]		CODE ID. NO.	03554	SCALE	4:1	WT.	-----
				SURF.	-----	SHEET 3 OF 3	