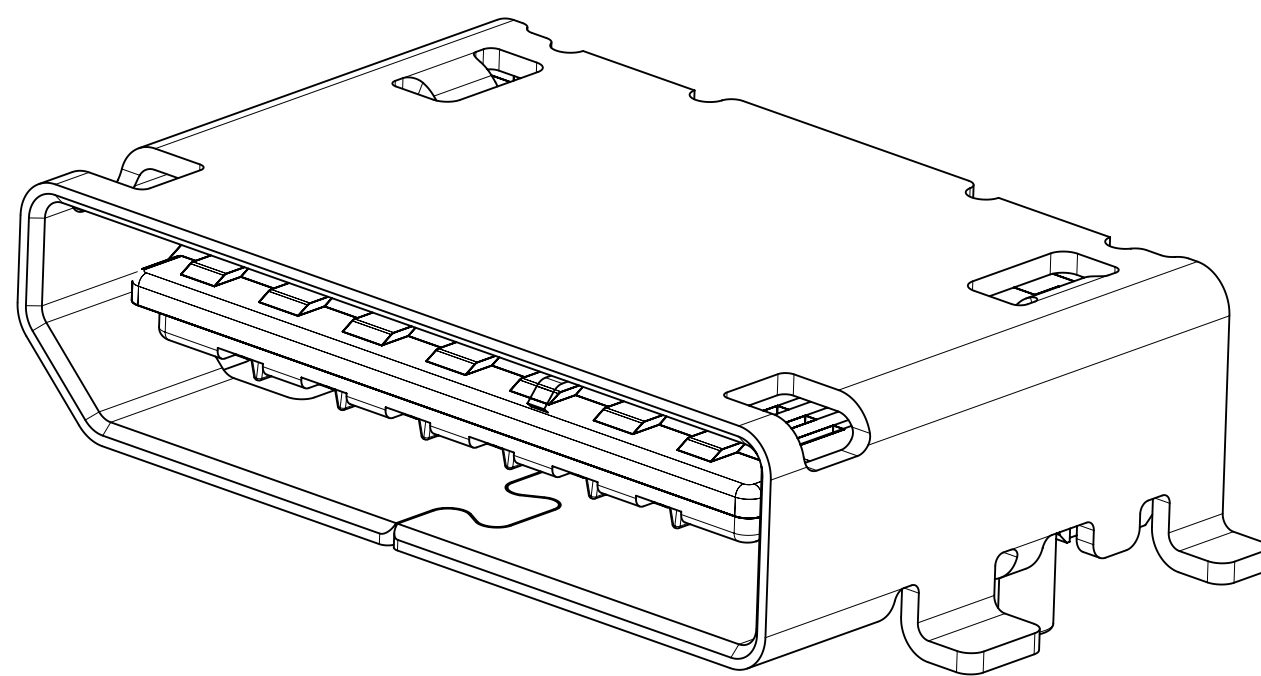
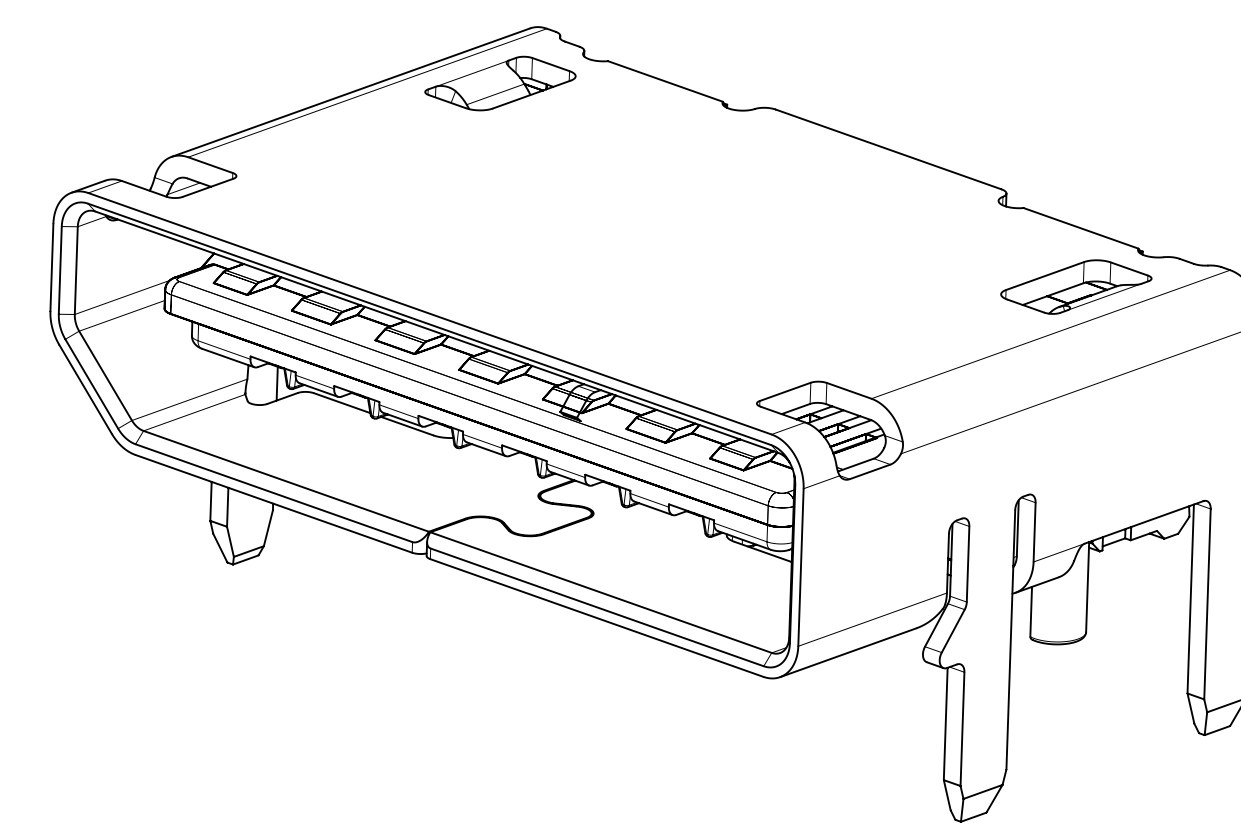


STATUS	MATERIAL NUMBER	SHELL ATTACH OPTION	DIM 'T'
TOOLED	171982-0142	SMT	-
TOOLED	171982-1142	TH	3
TOOLED	171982-2142	TH	2.36
TOOLED	171982-3142	TH	1.57

42 CIRCUIT SMT SHELL



42 CIRCUIT THRU HOLE SHELL



NOTES:

- MATERIALS:**
HOUSING - GLASS FILLED THERMOPLASTIC, 94V-0
CONTACTS - HIGH PERFORMANCE COPPER ALLOY
SHIELD - STAINLESS STEEL
- FINISH:**
CONTACTS - 0.76µm MIN. GOLD MATING SIDE
▽ 2.03µm TIN ON SOLDER TAILS
1.27µm MIN. NICKEL UNDERPLATE OVERALL

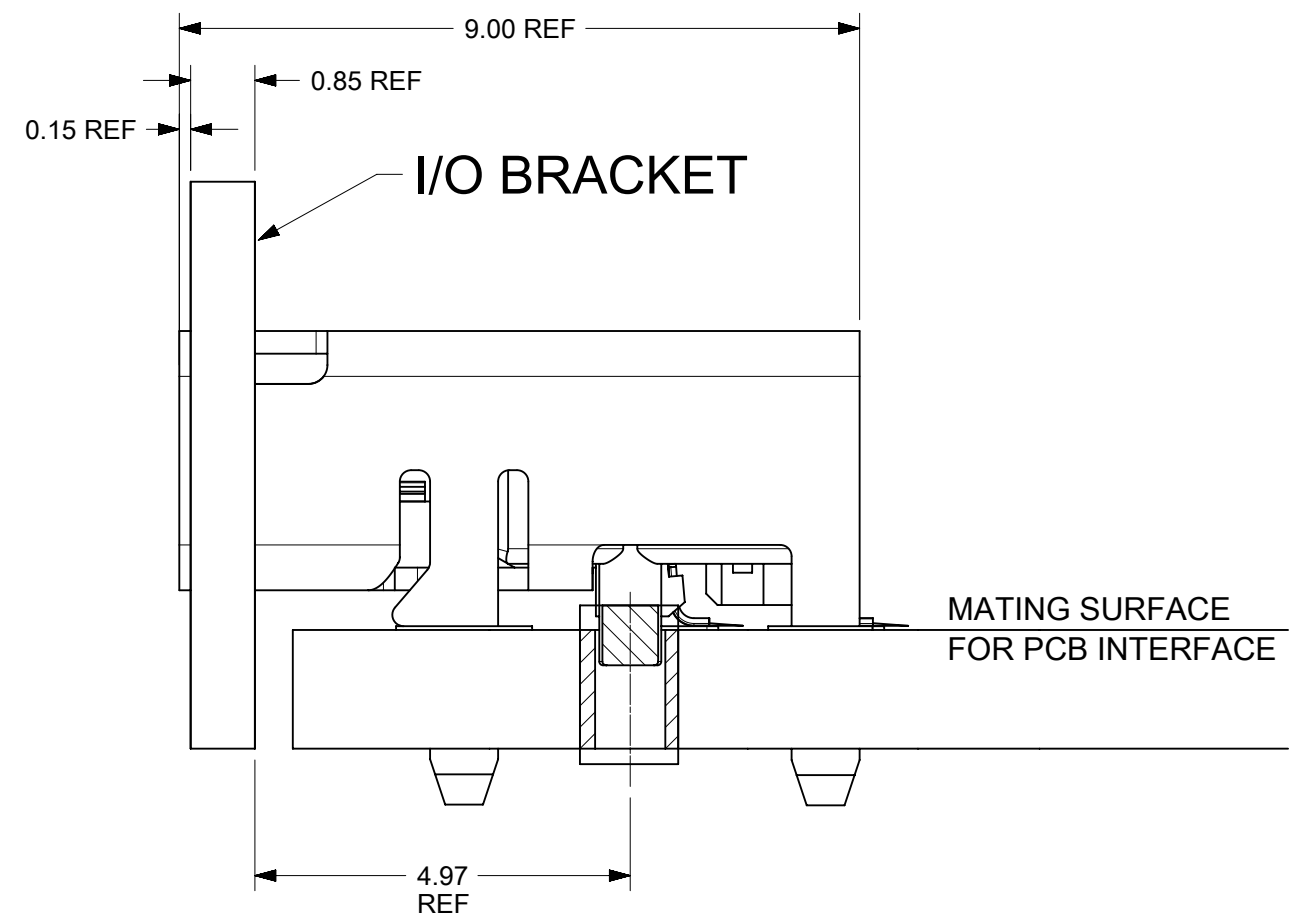
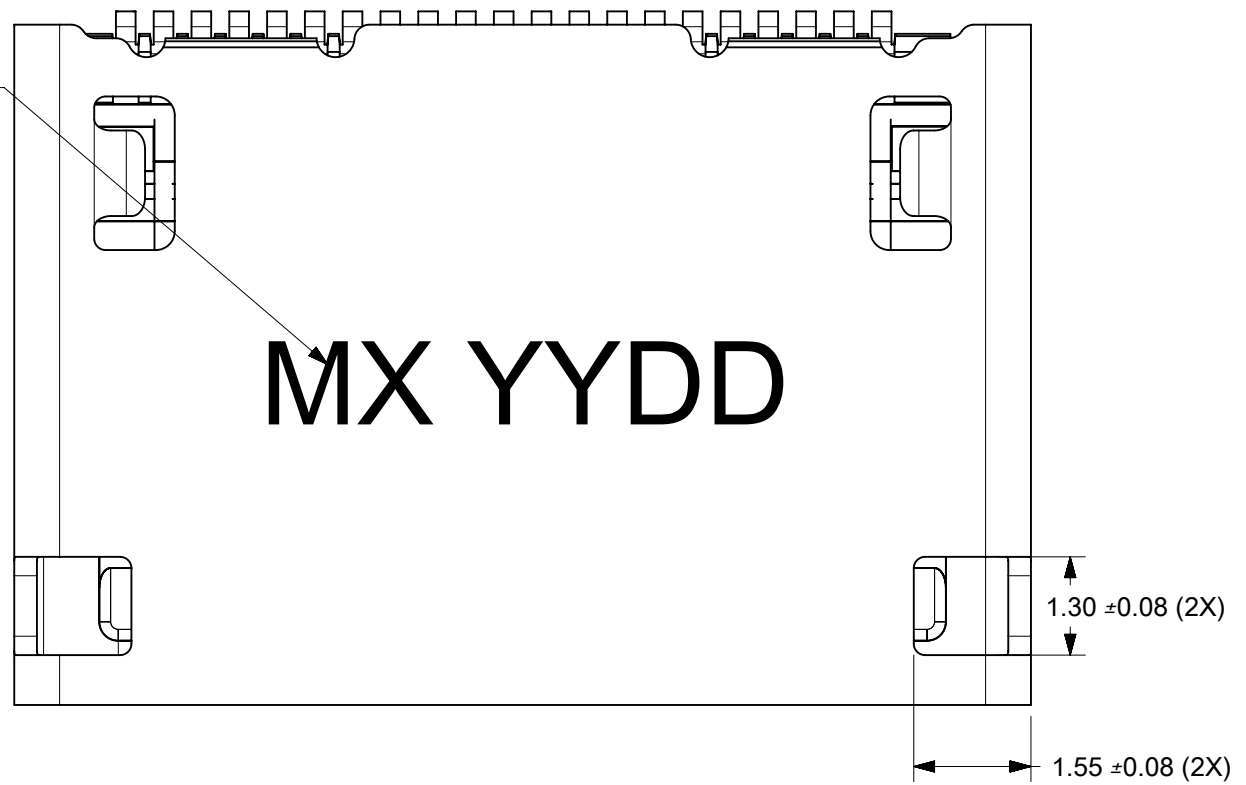
SHIELD - MATTE TIN OVER 1.27µm MIN. NICKEL
- PRODUCT SPECIFICATION:** PS-171982-0001
- PACKAGING SPECIFICATION:** PK-173307-0001
- MATES WITH:** MOLEX CABLE SERIES 100436
PER INDUSTRY STANDARD PCIe OCuLink OR SFF-8612
- APPLICATION SPECIFICATION:** AS-173162-0001
- COSMETIC SPECIFICATION:** PS-45499-002 CALASS B

THIS DRAWING CONTAINS INFORMATION THAT IS PROPRIETARY TO MOLEX ELECTRONIC TECHNOLOGIES, LLC AND SHOULD NOT BE USED WITHOUT WRITTEN PERMISSION													
EC NO: 607300 DRWN: CCHEN103 CHKD: JKACHLIC REV APPR: JKACHLIC	2018/05/24	GENERAL TOLERANCES (UNLESS SPECIFIED)		DIMENSION UNITS	SCALE								
	2018/11/13	ANGULAR TOL ± 0.5 °		mm	10:1								
	2018/11/13	4 PLACES ±	DRWN BY		DATE		NANO-PITCH I/O RIGHT ANGLE 4X						
		3 PLACES ±	MJANTELEZIO		2015/10/21								
		2 PLACES ± 0.13	CHKD BY		DATE								
		1 PLACE ± 0.25	JKACHLIC		2017/11/10								
		0 PLACES ±	APPR BY		DATE		PRODUCT CUSTOMER DRAWING						
		DRAFT WHERE APPLICABLE MUST REMAIN WITHIN DIMENSIONS		MBANAKIS		2015/11/09		SERIES	MATERIAL NUMBER	CUSTOMER			
				DRAWING SIZE	THIRD ANGLE PROJECTION		171982	SEE CHART	GENERAL MARKET				
	J			D			DOCUMENT NUMBER	DOC TYPE	DOC PART	SHEET NUMBER			
						SD-171982-1000	PSD	001	1 OF 5				

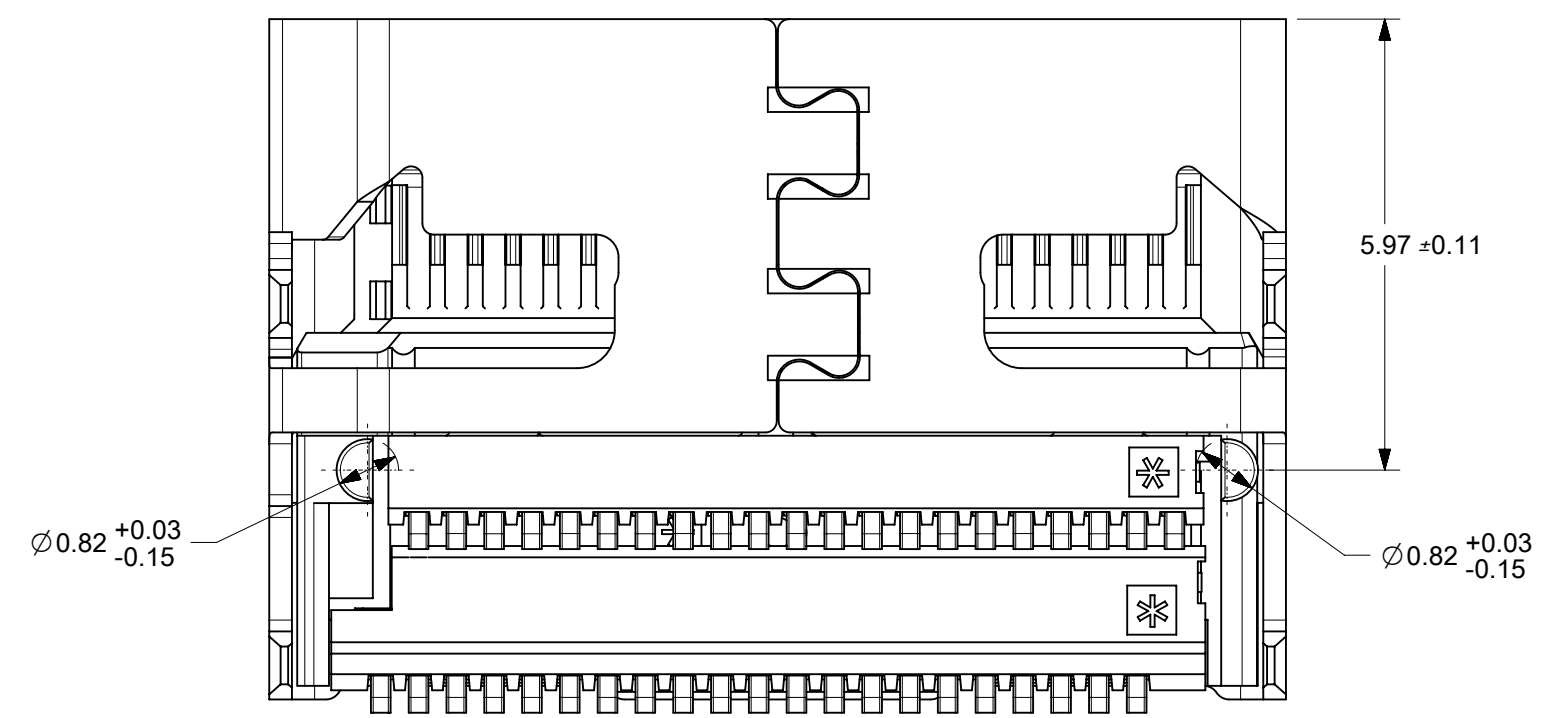
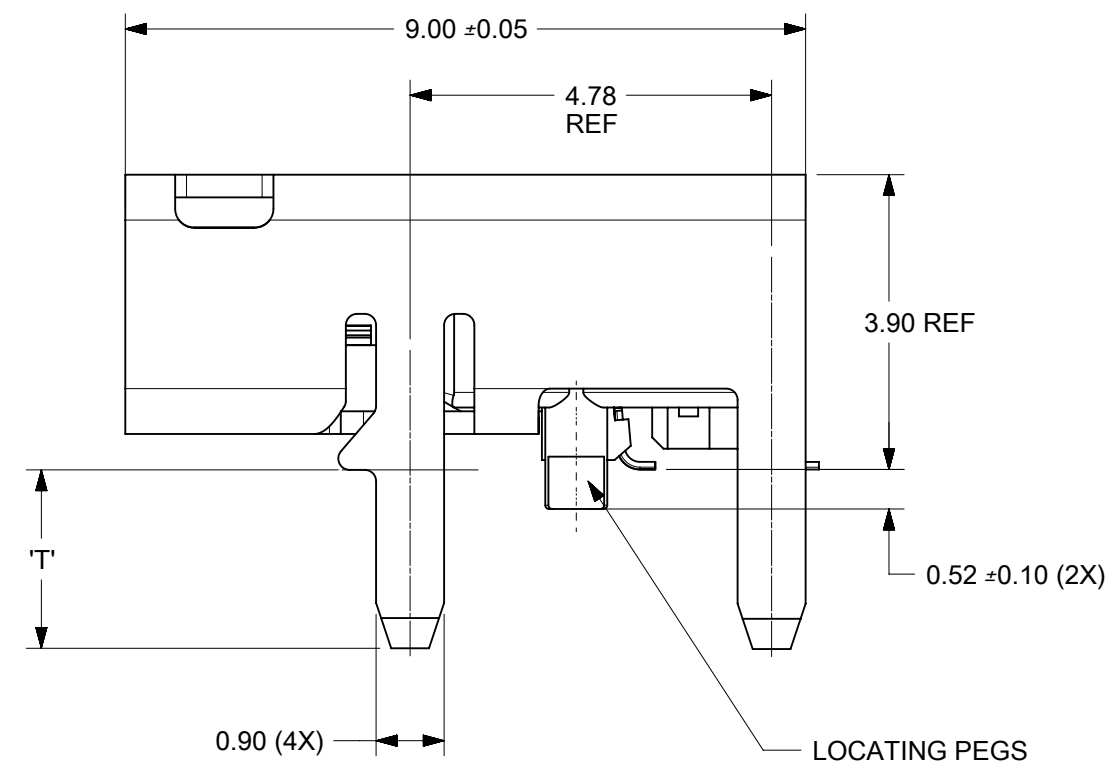
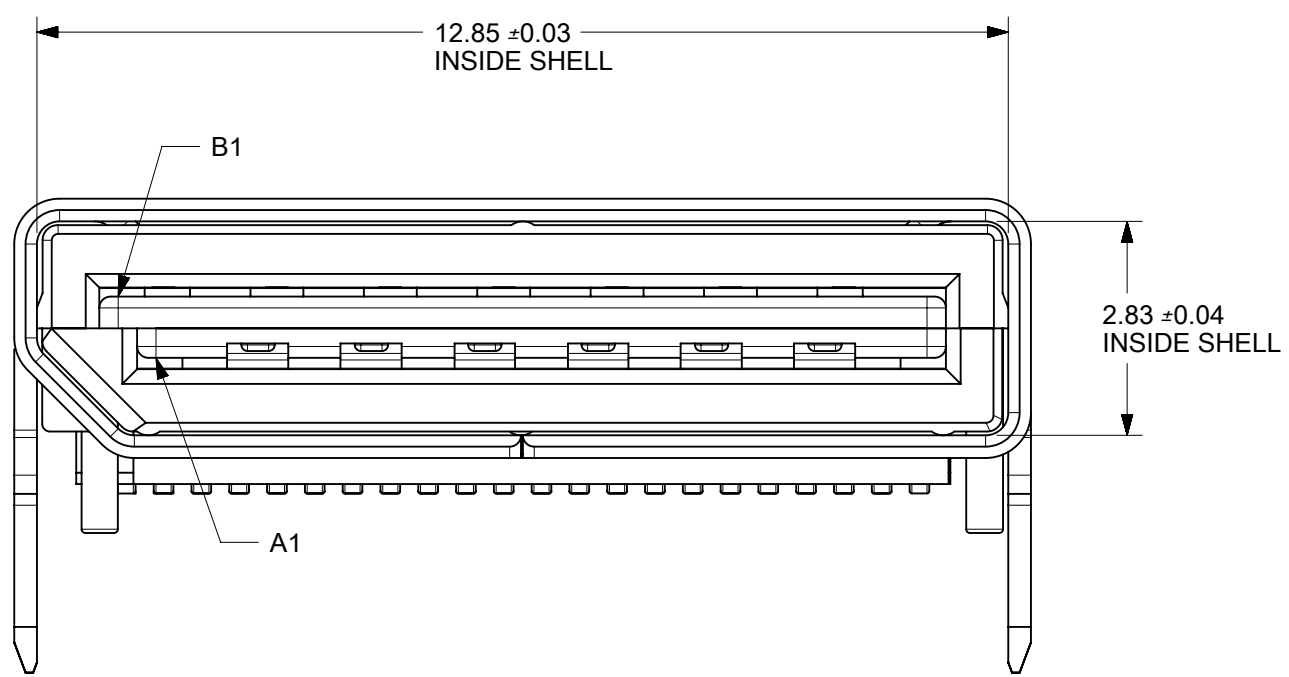
RELEASE STATUS	P1	RELEASE DATE	2018/11/13	10:08:49
----------------	----	--------------	------------	----------

42 CIRCUIT TH ASSEMBLY

SEE NOTE #1



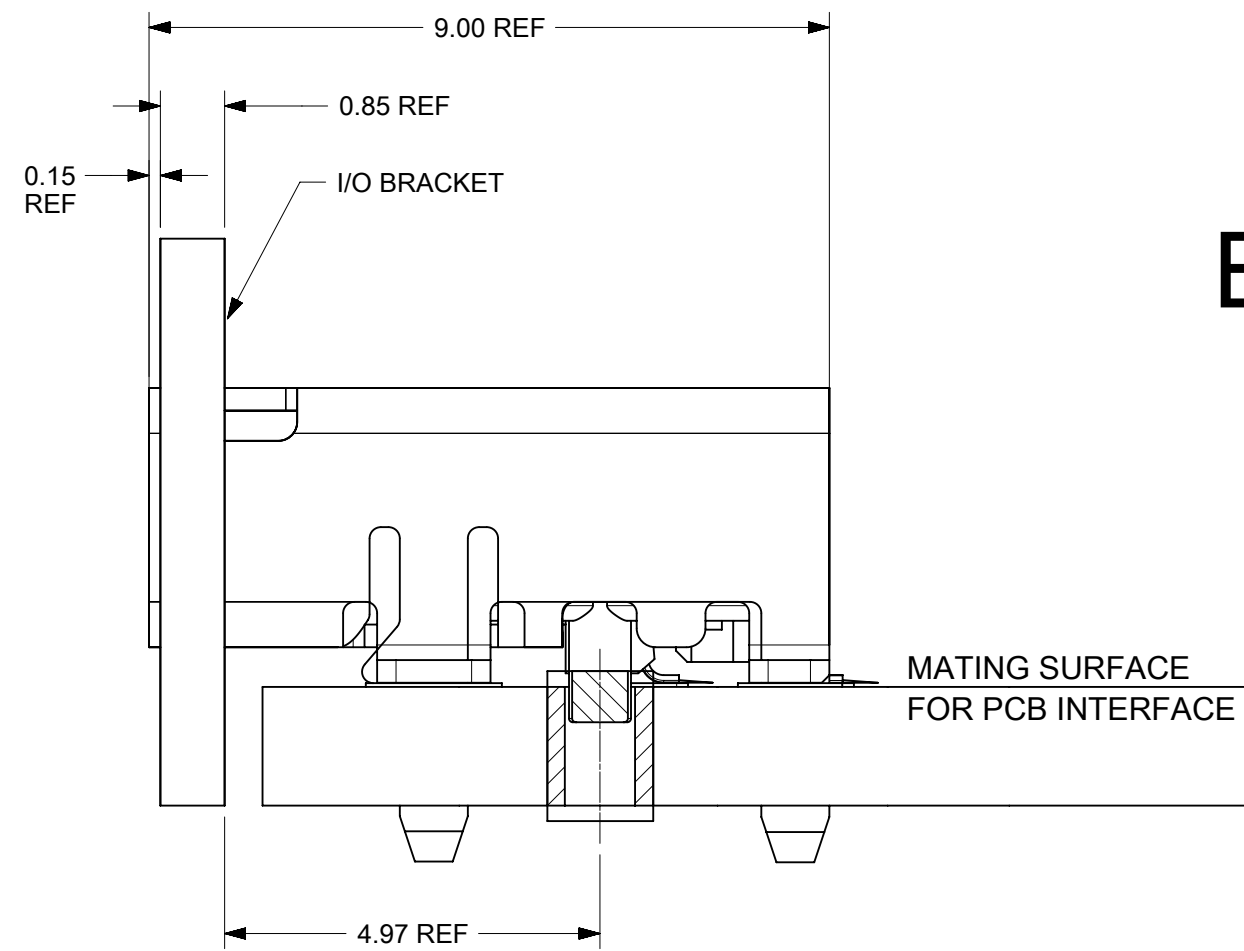
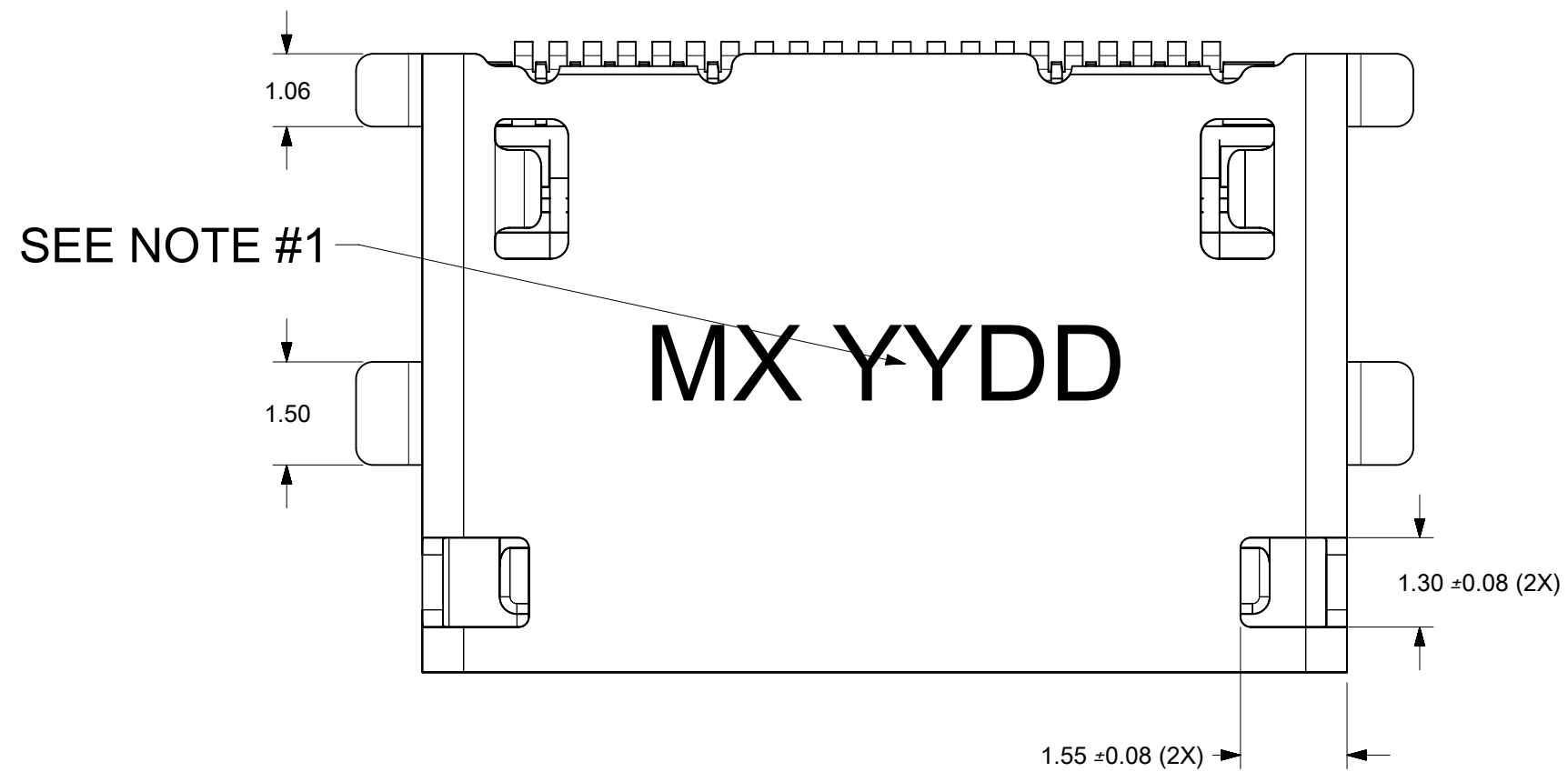
EXTERNAL



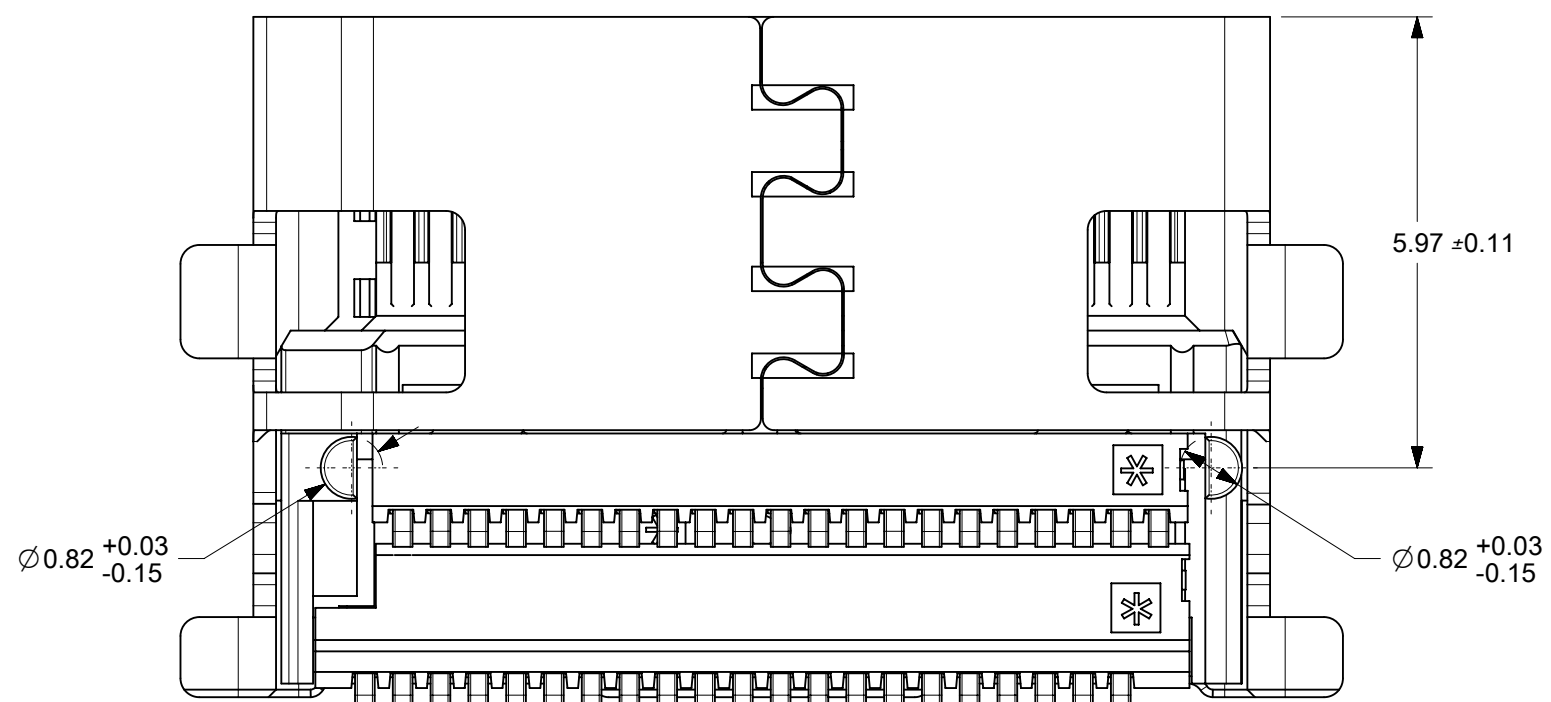
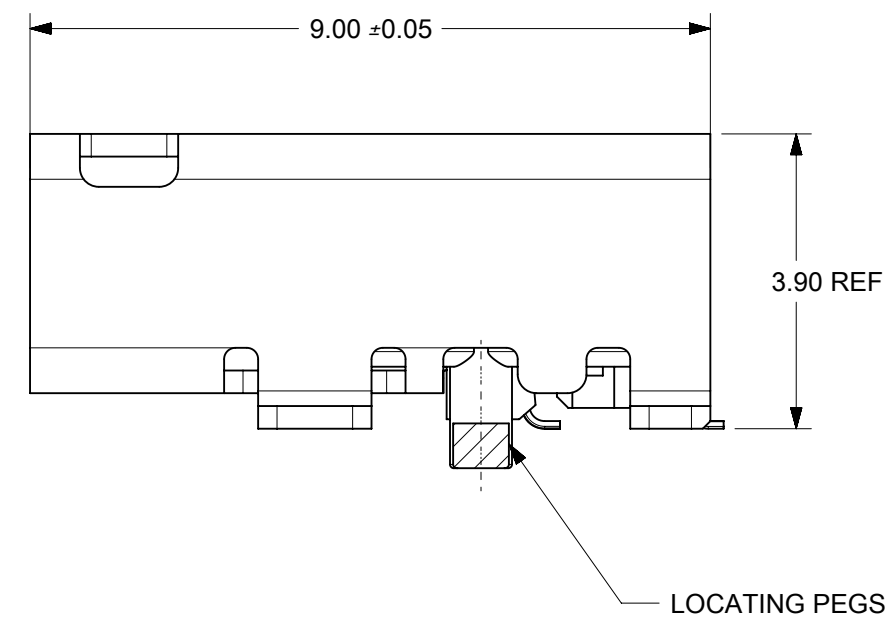
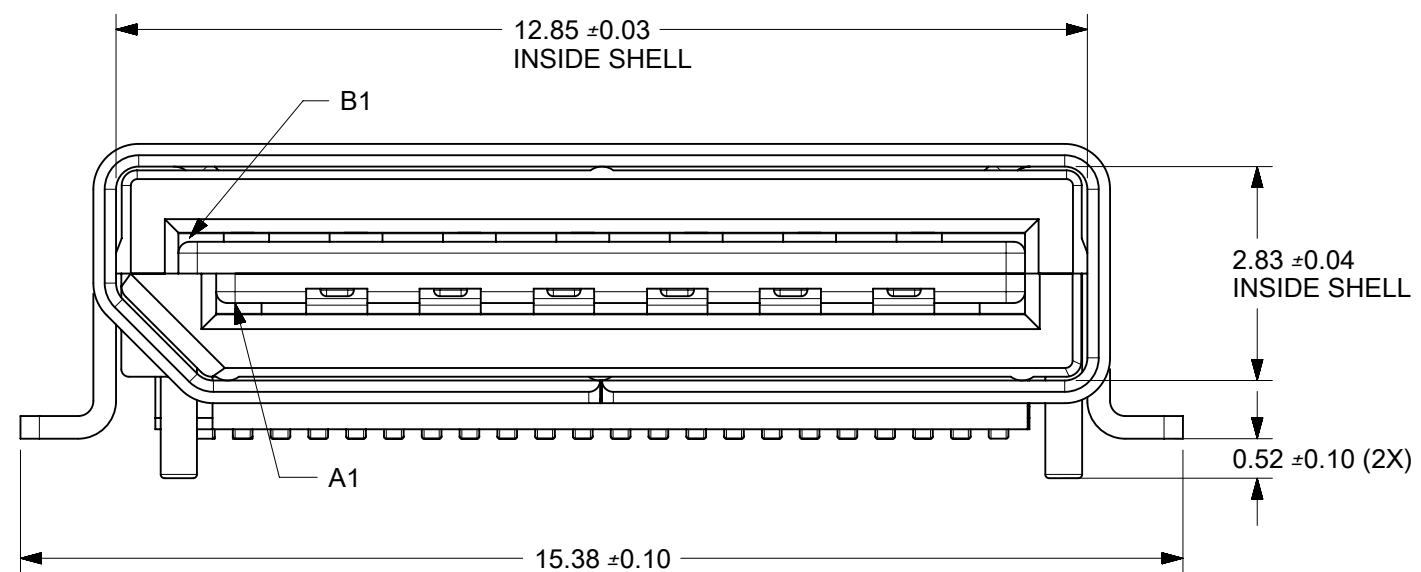
NOTES:
 1. MANUFACTURED DATE CODE (JULIAN CALENDAR)
 2. SOLDER TAIL COPLANARITY 0.10 MAX

THIS DRAWING CONTAINS INFORMATION THAT IS PROPRIETARY TO MOLEX ELECTRONIC TECHNOLOGIES, LLC AND SHOULD NOT BE USED WITHOUT WRITTEN PERMISSION											
EC NO: 607300 DRWN: CCHEN103 CHKD: JKACHLIC APPR: JKACHLIC	GENERAL TOLERANCES (UNLESS SPECIFIED)						DIMENSION UNITS		SCALE		
	ANGULAR TOL ± 0.5 °						mm		10:1		
	4 PLACES ±		3 PLACES ±		2 PLACES ± 0.13		DRWN BY		DATE		
	1 PLACE ± 0.25		0 PLACES ±		DRAFT WHERE APPLICABLE MUST REMAIN WITHIN DIMENSIONS		MJANTELEZIO		2015/10/21		
							CHKD BY		DATE		
							JKACHLIC		2017/11/10		
J		REV				APPR BY		DATE		PRODUCT CUSTOMER DRAWING	
						MBANAKIS		2015/11/09		SERIES MATERIAL NUMBER CUSTOMER	
						DRAWING SIZE		THIRD ANGLE PROJECTION		171982 SEE CHART GENERAL MARKET	
						C				DOCUMENT NUMBER DOC TYPE DOC PART SHEET NUMBER	
										SD-171982-1000 PSD 001 2 OF 5	

42 CIRCUIT SMT ASSEMBLY



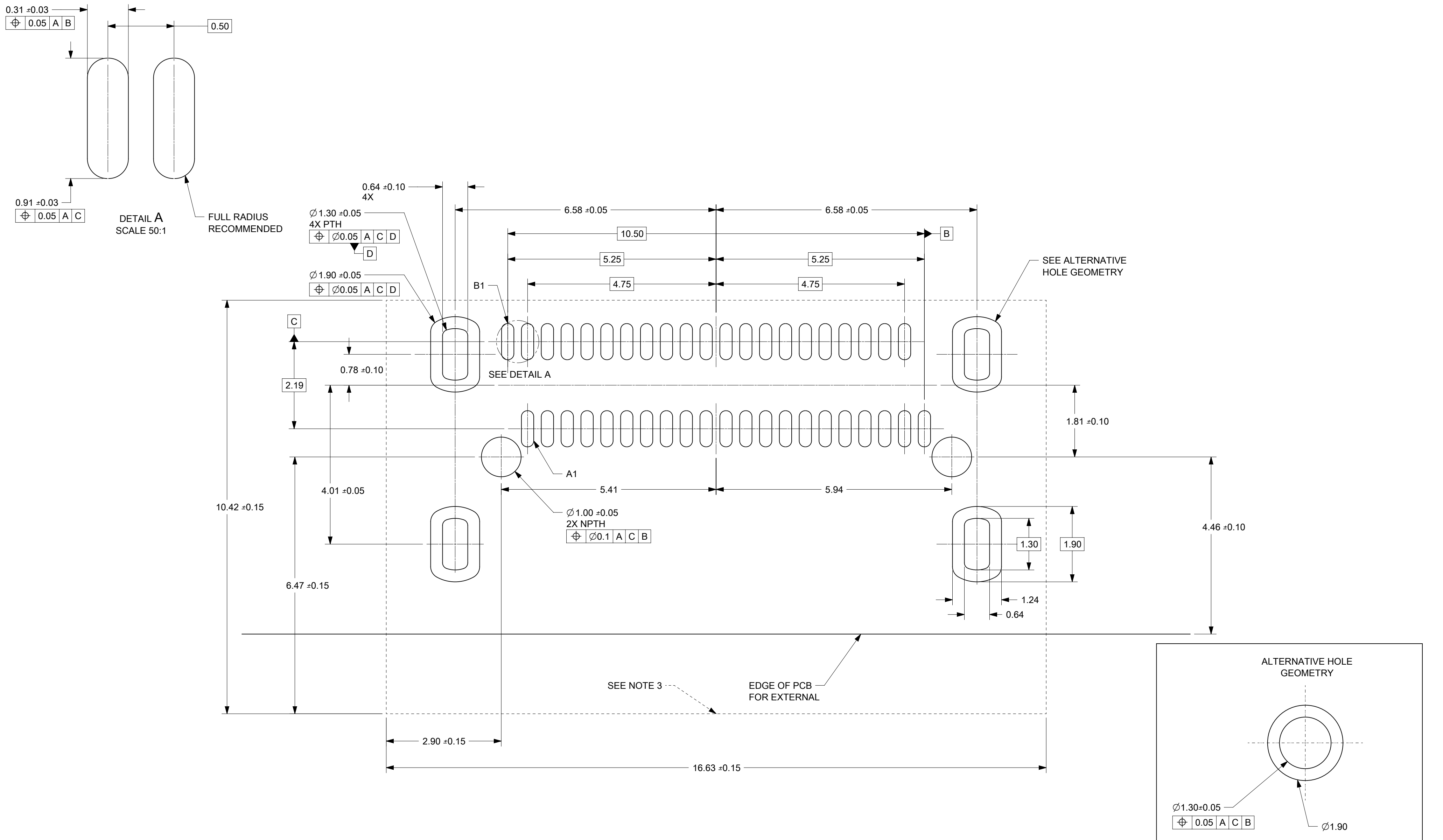
EXTERNAL



- NOTES:**
1. MANUFACTURED DATE CODE (JULIAN CALENDAR)
 2. SOLDER TAIL COPLANARITY 0.10 MAX

THIS DRAWING CONTAINS INFORMATION THAT IS PROPRIETARY TO MOLEX ELECTRONIC TECHNOLOGIES, LLC AND SHOULD NOT BE USED WITHOUT WRITTEN PERMISSION												
EC NO: 607300 DRWN: CCHEN103 CHKD: JKACHLIC REV / APPR: JKACHLIC	2018/05/24		2018/11/13		2018/11/13		GENERAL TOLERANCES (UNLESS SPECIFIED)		DIMENSION UNITS		SCALE	
	4 PLACES		±		3 PLACES		±		mm		10:1	
	3 PLACES		±		2 PLACES		± 0.13		DRWN BY		DATE	
	2 PLACES		±		1 PLACE		± 0.25		MJanTELEZIO		2015/10/21	
	1 PLACE		±		0 PLACES		±		CHKD BY		DATE	
	0 PLACES		±		DRAFT WHERE APPLICABLE MUST REMAIN WITHIN DIMENSIONS		C		JKACHLIC		2017/11/10	
APPR BY		DATE		DRAWING SIZE		THIRD ANGLE PROJECTION		MBANAKIS		2015/11/09		
SERIES		MATERIAL NUMBER		CUSTOMER		PRODUCT CUSTOMER DRAWING		171982		SEE CHART		
DOCUMENT NUMBER		DOC TYPE		DOC PART		SHEET NUMBER		SD-171982-1000		PSD 001 3 OF 5		

42 CIRCUIT TAIL RECOMMENDED FOOTPRINT

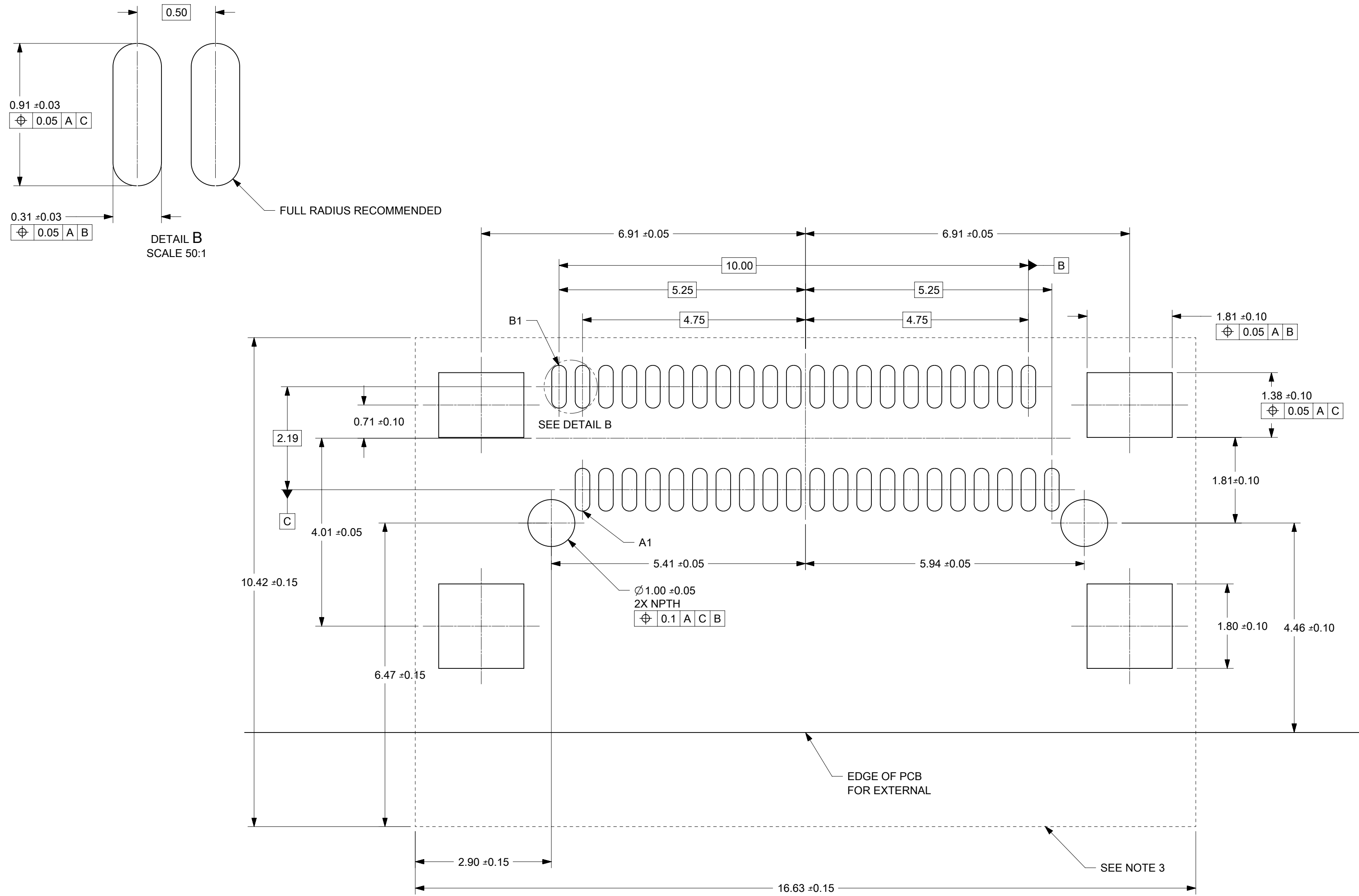


NOTES:

1. MINIMUM RECOMMENDED SPACING BETWEEN ADJACENT CONNECTOR IS 19.05mm
2. MINIMUM RECOMMENDED PCB THICKNESS: 1.57mm
3. CONNECTOR KEEP OUT AREA
4. DATUM -A- ESTABLISHED FROM TOP SURFACE OF PCB

THIS DRAWING CONTAINS INFORMATION THAT IS PROPRIETARY TO MOLEX ELECTRONIC TECHNOLOGIES, LLC AND SHOULD NOT BE USED WITHOUT WRITTEN PERMISSION											
EC NO: 607300 DRWN: CCHEN103 CHKD: JKACHLIC REV: APPR: JKACHLIC	2018/05/24		2018/11/13		2018/11/13		GENERAL TOLERANCES (UNLESS SPECIFIED)		DIMENSION UNITS		SCALE
	mm		15:1		ANGULAR TOL ± 0.5 °		DRWN BY		DATE		
	4 PLACES ±		MJANTELEZIO		2015/10/21		CHKD BY		DATE		
	3 PLACES ±		JKACHLIC		2017/11/10		APPR BY		DATE		
	2 PLACES ± 0.13		MBANAKIS		2015/11/09		DRAWING SIZE		THIRD ANGLE PROJECTION		
	1 PLACE ± 0.25		C		0 PLACES ±		DRAFT WHERE APPLICABLE MUST REMAIN WITHIN DIMENSIONS				
SERIES			MATERIAL NUMBER			CUSTOMER			PRODUCT CUSTOMER DRAWING		
171982			SEE CHART			GENERAL MARKET					
DOCUMENT NUMBER						DOC TYPE		DOC PART		SHEET NUMBER	
SD-171982-1000						PSD		001		4 OF 5	

42 CIRCUIT SMT RECOMMENDED FOOTPRINT



NOTES:

1. MINIMUM RECOMMENDED SPACING BETWEEN ADJACENT CONNECTOR IS 19.05mm
2. MINIMUM RECOMMENDED PCB THICKNESS: 1.57mm
3. CONNECTOR KEEP OUT AREA
4. DATUM -A- ESTABLISHED FROM TOP SURFACE OF PCB

THIS DRAWING CONTAINS INFORMATION THAT IS PROPRIETARY TO MOLEX ELECTRONIC TECHNOLOGIES, LLC AND SHOULD NOT BE USED WITHOUT WRITTEN PERMISSION											
EC NO: 607300 DRWN: CCHEN103 CHKD: JKACHLIC REV: APPR: JKACHLIC	2018/05/24		2018/11/13		2018/11/13		GENERAL TOLERANCES (UNLESS SPECIFIED)		DIMENSION UNITS	SCALE	
	4 PLACES		±		ANGULAR TOL ± 0.5 °		mm		15:1		
	3 PLACES		±		DRAWN BY		DATE		MJANTELEZIO 2015/10/21		
	2 PLACES		± 0.13		CHKD BY		DATE		JKACHLIC 2017/11/10		
	1 PLACE		± 0.25		APPR BY		DATE		MBANAKIS 2015/11/09		
	0 PLACES		±		DRAWING SIZE		THIRD ANGLE PROJECTION		C		
DRAFT WHERE APPLICABLE MUST REMAIN WITHIN DIMENSIONS											
SERIES			MATERIAL NUMBER			CUSTOMER			PRODUCT CUSTOMER DRAWING		
171982			SEE CHART			GENERAL MARKET					
DOCUMENT NUMBER						DOC TYPE		DOC PART		SHEET NUMBER	
SD-171982-1000						PSD		001		5 OF 5	