

5

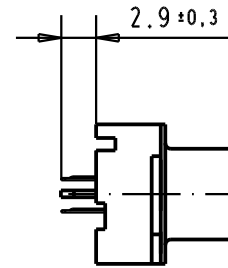
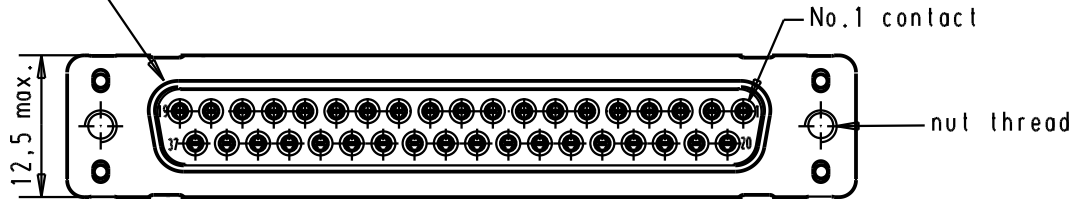
4

3

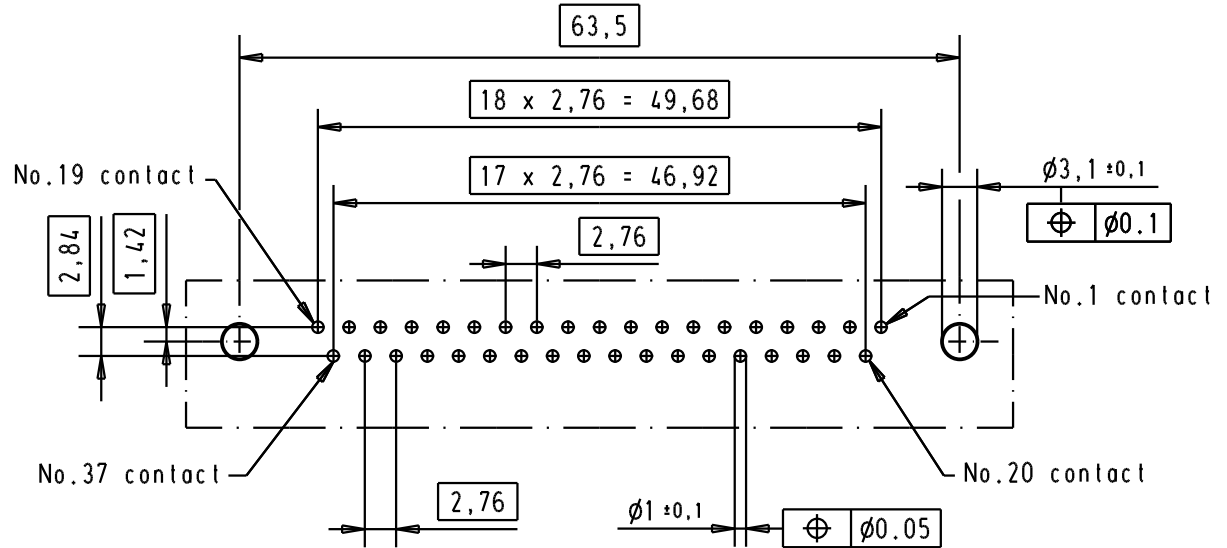
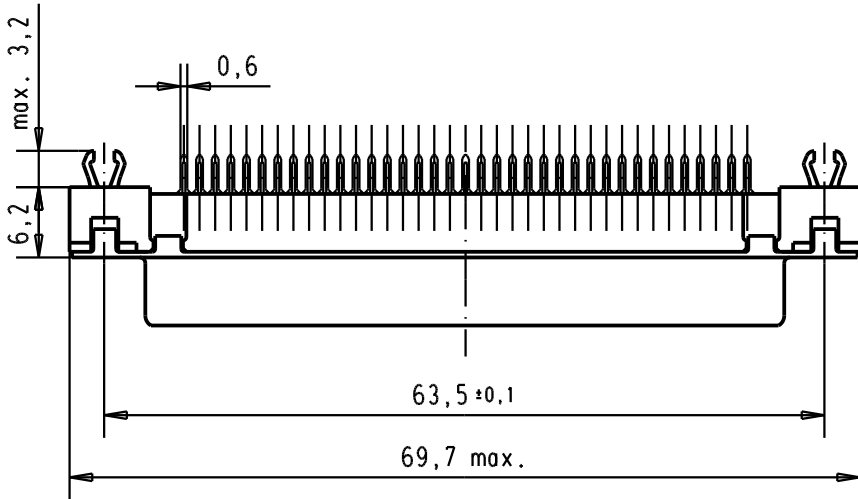
2

1



Mating face according to : MIL-C24308 / DIN 41652 / CECC 75301-802



Printed board layout component side



Connector retention and insertion forces on the PCB = 25 / 80 newtons.

A	09 66 451 3511	M3	1							 All Dim. in mm Orig. Size DIN A 4	D-sub, 37 poles, female, straight, with solder pins 2.9, nuts and grounding board lock	Maßstab/ Scale 1,5:1	
	09 66 451 6511	M3	2					Det.	05-MAR-02				CV
	09 66 451 7511	M3	3					Insp.					
	09 66 451 3512	4-40 UNC	1	31892	05/05/04	JH		Stand.					
	09 66 451 6512	4-40 UNC	2	31523	11-JUL-03	TCP							
	09 66 451 7512	4-40 UNC	3	29723	05-MAR-02	CV	HARTING EURL F-95972 Paris				TB 09 66 451 x51x	Blatt/ Page 1 /	
	Part number	Nut thread	Performance level	Mod.	Dat.	Name	Sub.						