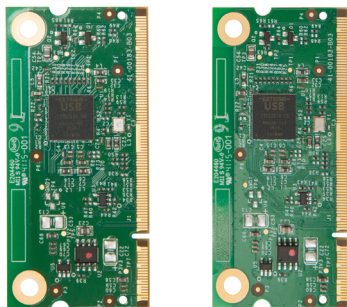


# USB 2.0 RG2300A/RG2310A Core Series

## Embedded USB 2.0 Extender Modules



RG2300A

RG2310A

The USB 2.0 RG2300A/2310A Core Series of extenders offers OEM developers the world's most reliable and advanced USB 2.0 extension technology in an easy-to-integrate pluggable SO-DIMM form factor. These daughterboard modules support USB 2.0 extension up to 10km and are capable of advanced features such as boosting bulk data transfer rates, switching USB signaling over a LAN, blocking certain USB device types, and enabling a virtual hub for simultaneous user interaction.

## Features

The RG2300A is a highly reliable and robust core module SO-DIMM daughterboard for point-to-point USB 2.0 extension applications while the RG2310A also features networking, switching and other advanced capabilities allowing developers to customize their OEM configurations. Both models are ideal for applications to extend USB peripherals such as flash drives, web cameras, microphones, speakers, touch screens, keyboards and mice.

Key features of the series include:

- USB 2.0 extension over copper, LAN, or fiber up to 10km
- Direct connectivity in MII, GMII, RGMII or TBI modes
- Interoperability with other ExtremeUSB® based 23xx extension solutions
- Advanced capabilities such as Mass Storage Acceleration, SwitchableUSB™, Device Class Filtering, Hot Key support, Vendor Lock and Simultaneous User Interaction

Includes the ExtremeUSB suite of features:

- Transparent USB extension
- True plug and play; no software drivers required
- Works with all major operating systems: Windows®, OS X®, and Linux®

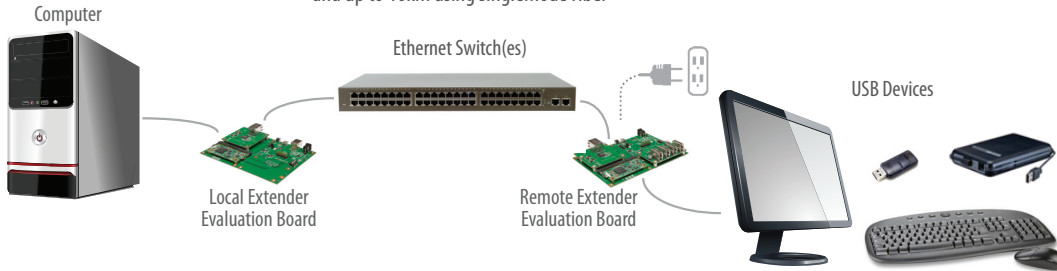
Summary of Features	RG2300A	RG2310A
<b>Maximum Throughput Rate:</b>		
Hi-speed (480 Mbps)	✓	✓
Full-speed (12 Mbps)	✓	✓
Low-speed (1.5 Mbps)	✓	✓
Point-to-Point Connection ▶ <i>extend USB devices over CAT 5e or fiber</i>	✓	✓
Mass Storage Acceleration ▶ <i>significantly boosts bulk data transfer rates</i>	✓	✓
USB over LAN ▶ <i>leverage existing in-building LAN cabling</i>		✓
SwitchableUSB™ ▶ <i>switch local and remote USB extender pairings over a LAN</i>		✓
Vendor Lock ▶ <i>customized configuration to protect OEM brand</i>		✓
Device Class Filtering ▶ <i>block mass storage and other devices</i>		✓
Hot Keys ▶ <i>support OEM defined key sequences to initiate various system actions</i>		✓
Simultaneous User Interaction ▶ <i>enable up to 4 different users in 4 various locations to collaboratively view and make changes to documents/images at the same time</i>		✓
<b>Transmission Media:</b>		
CAT 5e (up to 100m)	✓	✓
Multimode fiber (up to 500m)	✓	✓
Singlemode fiber (up to 10km)	✓	✓

# USB 2.0 RG2300A/2310A Core Series

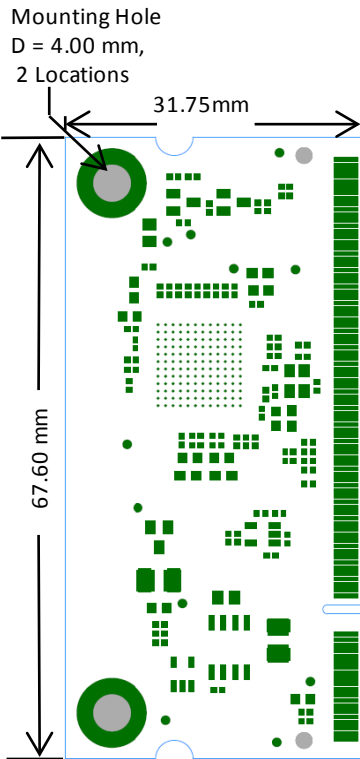
## Applications

- Medical devices
- Interactive video matrices
- KVM extension
- Networked educational kiosks

Up to 100m between network devices and extenders over CAT 5e (or better)  
and up to 10km using singlemode fiber



## USB 2.0 RG2300A/2310A Core Series Specifications



Module Dimensions

### MAXIMUM RANGE

CAT 5e (or better):	100m
Local Area Network (LAN):	100m between nodes
Fiber:	500m (Multimode) and 10km (Singlemode)

### PHYSICAL

PCB Dimensions:	67.60mm x 31.75mm
PCB Thickness:	1.00mm (+/- 0.10mm)
Max PCBA Height:	Top: 2.50mm (+/- 0.20mm), Bottom: 1.10mm (+/- 0.10mm)
Mounting Holes:	Diameter: 4.00mm (+/- 0.10mm)
Connector:	1.8V Standard Keyed 200-pin SO-DIMM

### ENVIRONMENTAL

Temperature:	Operating: 0°C to 50°C (32°F to 122°F) Storage: -20°C to 70°C (-4°F to 158°F)
Humidity (non-condensing):	Operating: 20% to 80% Relative Humidity, non-condensing Storage: 10% to 90% Relative Humidity, non-condensing

### POWER

Power Supply:	3.3V (Ask your sales representative for full product specifications)
---------------	--

### USB SUPPORT

USB Speeds:	Low-speed, Full-speed, High-speed
Max Throughput:	Up to 480 Mbps
Device Compatibility:	All device types and hubs
Host Compatibility:	OHCI, UHCI, EHCI, xHCI

### CONNECTIVITY

Link Interfaces:	IEEE 802.3-2000 (MII, GMII, RGMII), Ten-Bit Interface (TBI)
Network (RG2310A Core):	Ethernet (USB link only), UDP/IP (SwitchableUSB)

### INTERFACES

Interface PHYs:	Broadcom BCM54810, BCM54616 (GMII), Realtek RTL8211(GMII, RGMII), Texas Instruments TLK1221 (TBI)
USB Hub:	SMSC/Microchip 251x, 251xB, Cypress CYUSB314

### SUPPORT

Warranty:	2-year
-----------	--------



Specifications subject to change  
without notification.

©2016

Icron Technologies Corp.

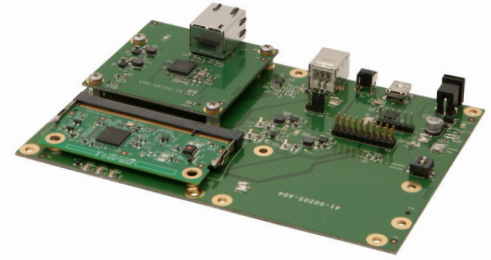
#90-01363-A03

## Developer Kits

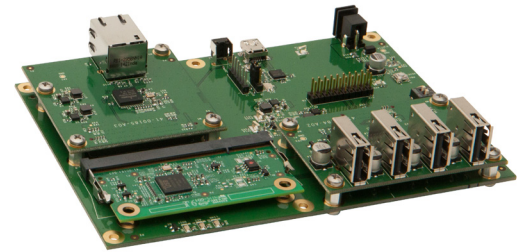
The USB 2.0 RG2300A/2310A Core Series Developer Kits provide a rapid means to evaluate the RG2300A/2310A Core Series of extenders in your application and to prototype custom solutions. The developer kits come with:

- Two evaluation boards with power supply
- One USB hub module (Cypress)
- One set of local and remote RG2300A or RG2310A Core daughterboard modules
- Choice of link interface modules (GMII, RGMII, TBI-MMF, or TBI-SMF)
- Choice of power cord (NA, EU, AU, UK, JP)
- Full documentation and instructions (specifications, drawings, schematics, etc.) provided on a USB stick

The modular design of the evaluation boards allow you to test your preferred USB or PHY chipsets with the core modules, while facilitating easy reversion to troubleshoot or prototype.

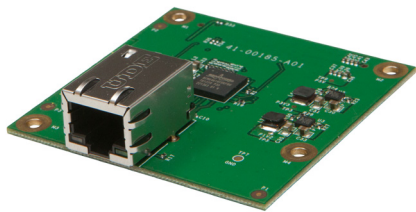


*Local Extender Evaluation Board with GMII and Core Modules*

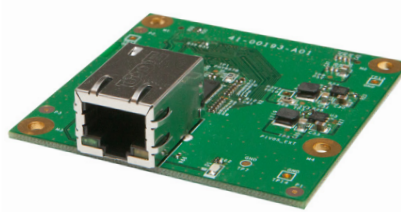


*Remote Extender Evaluation Board with GMII, USB Hub and Core Modules*

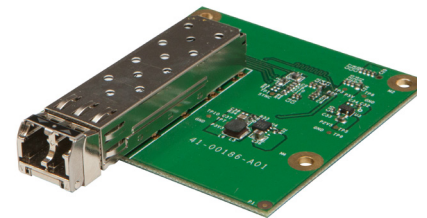
## Link Interface Module Options



*GMII Link Interface Module*

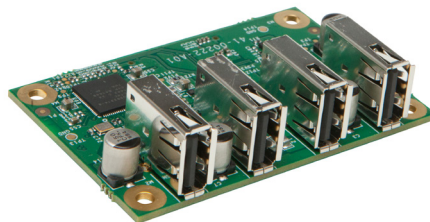


*RGMII Link Interface Module*

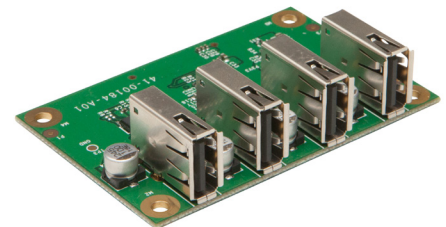


*TBI Link Interface Modules*

## USB Hub Module Options



*Default: Included in Kit  
4-Port USB Hub Module (Cypress)*



*4-Port USB Hub Module  
(SMSC/Microchip)*



Specifications subject to change without notification.

©2016

Icron Technologies Corp.

#90-01363-A03

# USB 2.0 RG2300A/2310A Core Series Ordering Information

All USB 2.0 RG2300A/2310A Core daughterboard modules and related products feature a 2-year warranty. For more information email [sales@icron.com](mailto:sales@icron.com) or call +1 604 638 3920.

PART #	NAME	DESCRIPTION
<b>CORE MODULES</b>		
02-00074	USB 2.0 RG2300A Core Local Extender Module	USB 2.0 RG2300A local extender core daughterboard module (SO-DIMM) for MII, GMII, RGMII, and TBI modes over CAT X or fiber optics.
02-00075	USB 2.0 RG2300A Core Remote Extender Module	USB 2.0 RG2300A remote extender core daughterboard module (SO-DIMM) for MII, GMII, RGMII, and TBI modes over CAT X or fiber optics.
02-00076	USB 2.0 RG2310A Core Local Extender Module	USB 2.0 RG2310A local extender core daughterboard module (SO-DIMM) for LAN/SwitchableUSB™ over MII, GMII or RGMII, and direct connect over MII, GMII, RGMII or TBI using CAT X or fiber optics.
02-00077	USB 2.0 RG2310A Core Remote Extender Module	USB 2.0 RG2310A remote extender core daughterboard module (SO-DIMM) for LAN/SwitchableUSB™ over MII, GMII or RGMII, and direct connect over MII, GMII, RGMII or TBI using CAT X or fiber optics.
<b>DEVELOPER KITS</b>		
00-00374	USB 2.0 RG2300A Core Developer Kit	Base developer kit for RG2300A core modules. Includes: 1 RG2300 core series local extender evaluation motherboard, 1 RG2300 core series remote extender evaluation motherboard, 1 RG2300A core local extender module, 1 RG2300A core remote extender module, 1 Cypress USB hub module, 1 international power supply, 1 USB A to B cable, 1 USB A to Mini B programming cable, USB stick with documentation and instructions. <b>Requires:</b> 2 matching link interface modules, 1 power cord.
00-00375	USB 2.0 RG2310A Core Developer Kit	Base developer kit for RG2310A core modules. Includes: 1 RG2300 core series local extender evaluation motherboard, 1 RG2300 core series remote extender evaluation motherboard, 1 RG2310A core local extender module, 1 RG2310A core remote extender module, 1 Cypress USB hub module, 1 international power supply, 1 USB A to B cable, 1 USB A to Mini B programming cable, USB stick with documentation and instructions. <b>Requires:</b> 2 matching link interface modules, 1 power cord.
<b>PICK 2 MATCHING LINK INTERFACE MODULES (Refer to product specifications for list of chipset(s) supported)</b>		
02-00050	Link Interface Module: GMII	Modular component for evaluating the specified supported GMII chipset
02-00051	Link Interface Module: RGMII	Modular component for evaluating the specified supported RGMII chipset
02-00052	Link Interface Module: TBI-MMF	Modular component for evaluating TBI mode over multimode fiber
02-00063	Link Interface Module: TBI-SMF	Modular component for evaluating TBI mode over singlemode fiber
<b>PICK 1 POWER CORD (For appropriate region)</b>		
21-00055	NA Power Cord	IEC320-C7/C8 2-pin power cord for North America
21-00056	EU Power Cord	IEC320-C7/C8 2-pin power cord for European Union
21-00057	UK Power Cord	IEC320-C7/C8 2-pin power cord for United Kingdom
21-00058	AU Power Cord	IEC320-C7/C8 2-pin power cord for Australia
21-00109	JP Power Cord	IEC320-C7/C8 2-pin power cord for Japan
<b>DEVELOPER KIT ADDITIONAL ACCESSORIES / REPLACEMENT ITEMS</b>		
02-00049	USB Hub Module (SMSC/Microchip)	Module component for evaluating the specified supported USB hub chipset (Refer to product specifications for list of chipset(s) supported)
02-00078	USB Hub Module (Cypress)	Module component for evaluating the specified supported USB hub chipset (Refer to product specifications for list of chipset(s) supported) Note: Use with the new RG2300A and RG2310A only
21-00002	USB A to B Cable	USB 2.0/1.1 A to B, 2.0m, 24AWG
21-00102	USB A to Mini B Programming Cable	USB 2.0/1.1 A to Mini B, 1.8m, 26/28 AWG
21-00111	5V 3A International Power Supply	5V 3A DC, Lvl6, 100-240VAC input power supply with 1.7mm (ID) plug, and IEC320-C7/C8 2-pin connector
10-00393	Test Enclosure	Aluminum enclosure for evaluating emissions and immunity with standard developer kit. Includes: top and bottom enclosures with faceplates matching configurations ordered.
02-00053	USB 2.0 RG2300 Core Series Local Extender Evaluation motherboard	Local extender evaluation motherboard for RG2300/2310 or RG2300A/2310A core modules.
02-00054	USB 2.0 RG2300 Core Series Remote Extender Evaluation motherboard	Remote extender evaluation motherboard for RG2300/2310 or RG2300A/2310A core modules.